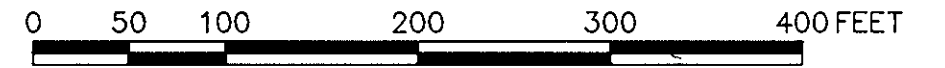


PLAT OF
13.988 ACRES FOR

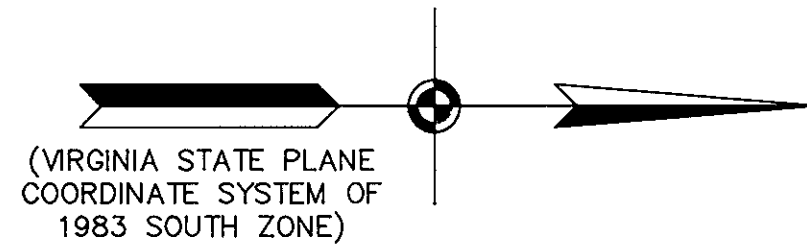
**ENICE V. HARSHBARGER
&
LEONARD E. HARSHBARGER**

POQUOSON DISTRICT - COUNTY OF YORK, VIRGINIA
SCALE: 1" = 100' JANUARY, 1990

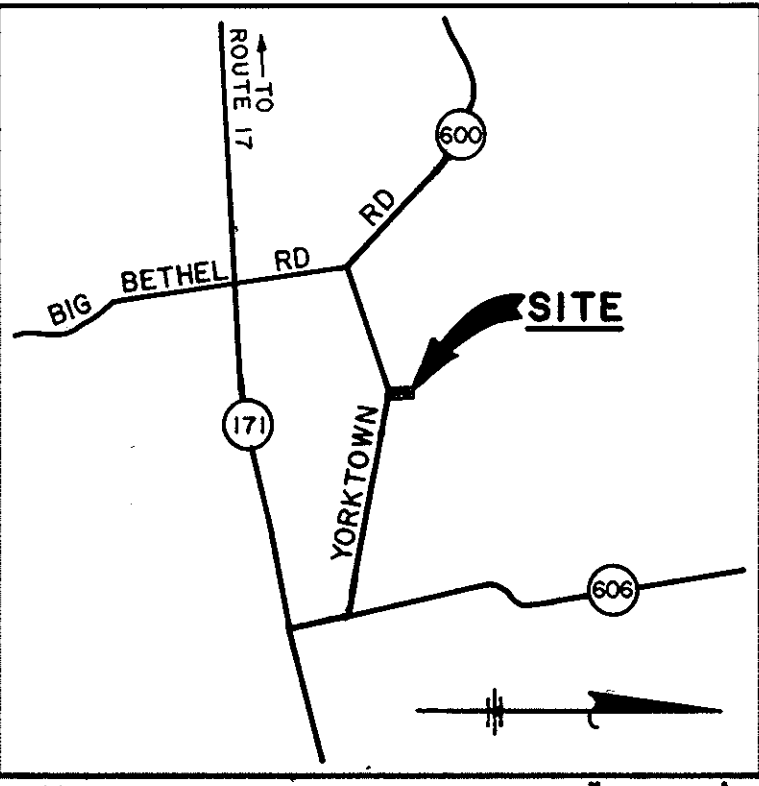


GRAPHIC SCALE

THE SIRINE GROUP, LTD.
SURVEYORS • ENGINEERS • PLANNERS
P.O. BOX 450, ROUTE 17
WHITE MARSH, VIRGINIA 23183



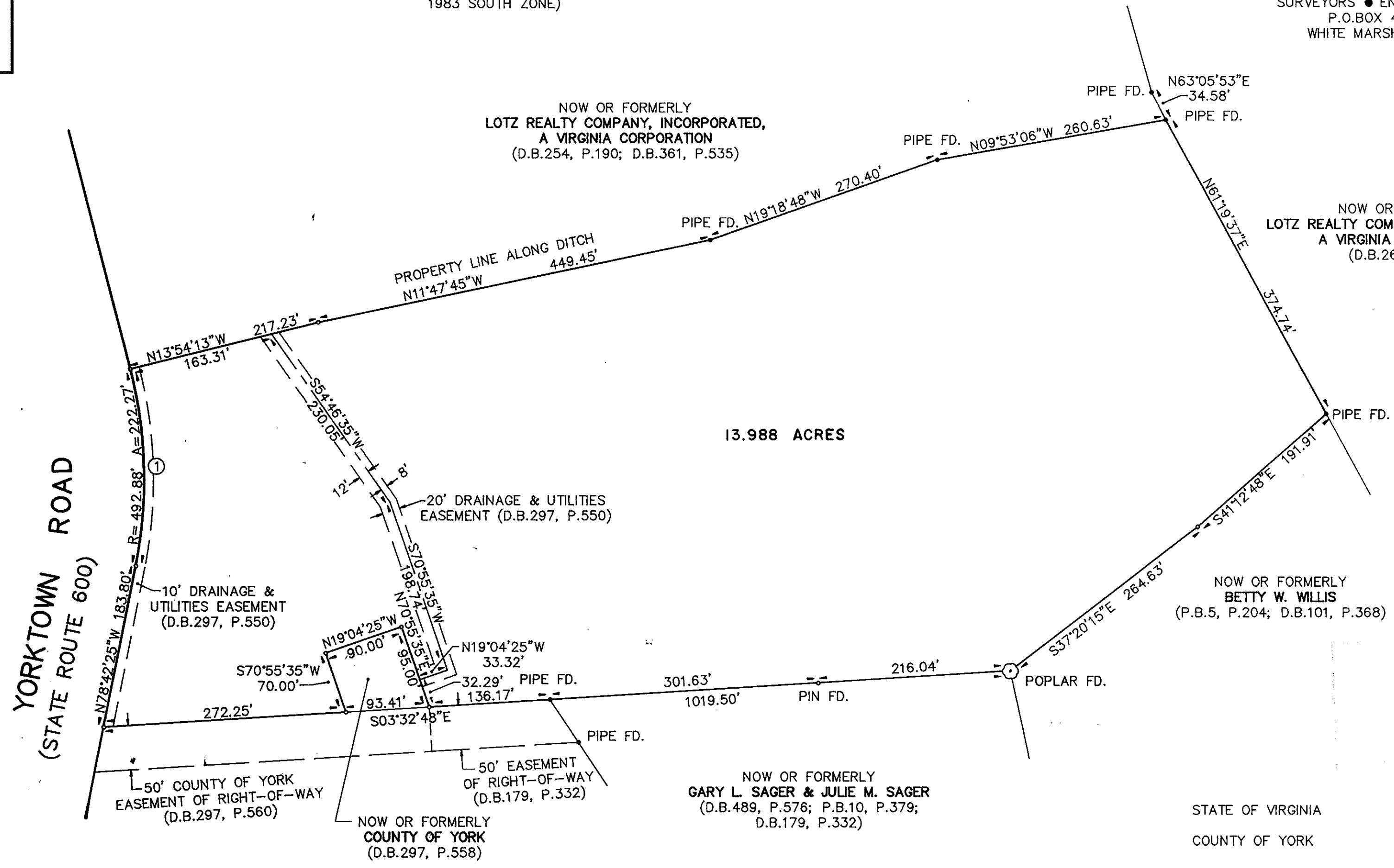
(VIRGINIA STATE PLANE
COORDINATE SYSTEM OF
1983 SOUTH ZONE)



VICINITY MAP SCALE: 1" = 2000'

LEGEND:

- PIN FOUND OR SET
- PIPE FOUND



13.988 ACRES

NOW OR FORMERLY
LOTZ REALTY COMPANY, INCORPORATED,
A VIRGINIA CORPORATION
(D.B.254, P.190; D.B.361, P.535)

NOW OR FORMERLY
LOTZ REALTY COMPANY, INCORPORATED,
A VIRGINIA CORPORATION
(D.B.260, P.361)

NOW OR FORMERLY
BETTY W. WILLIS
(P.B.5, P.204; D.B.101, P.368)

NOW OR FORMERLY
GARY L. SAGER & JULIE M. SAGER
(D.B.489, P.576; P.B.10, P.379;
D.B.179, P.332)

NOW OR FORMERLY
EDWARD P. WILSON & ELIZABETH H. WILSON
PARCEL "A"
(D.B.218, P.254; D.B.297, P.553)

NOW OR FORMERLY
COUNTY OF YORK
(D.B.297, P.558)

STATE OF VIRGINIA
COUNTY OF YORK

IN THE CLERK'S OFFICE FOR THE CIRCUIT COURT FOR THE
COUNTY OF YORK THE 18th DAY OF May, 1990,
THIS PLAT WAS PRESENTED AND ADMITTED TO RECORD AS THE
LAW DIRECTS IN PLAT BOOK 11, PAGE 204.

TESTE: NANCY B. KANE CLERK

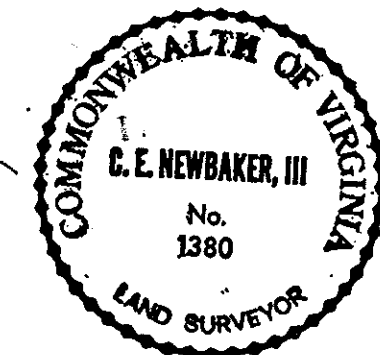
BY: Catharine Bender, Jr.

PROPERTY IS TAX MAP PARCEL 211, SECTION 30-9.

PROPERTY REFERENCES:
D.B.444, P.702
D.B.297, P.558
D.B.297, P.550
W.B. 51, P.268

THE PROPERTY EMBRACED WITHIN THE LIMITS OF THIS BOUNDARY SURVEY IS IN THE NAME OF ENICE V. HARSHBARGER AND LEONARD E. HARSHBARGER AS SHOWN BY DEED DATED JUNE 10, 1986 AND RECORDED IN DEED BOOK 444, PAGE 702 IN THE CLERK'S OFFICE OF THE CIRCUIT COURT OF THE COUNTY OF YORK, VIRGINIA.

THIS SURVEY IS BASED ON A CURRENT FIELD SURVEY.



CURVE TABLE

NO.	RADIUS	DELTA	ARC	TANGENT	CHORD
1	492.88'	25°50'17"	222.27'	113.06'	220.39'

I HEREBY CERTIFY THAT THIS SURVEY TO THE BEST OF MY KNOWLEDGE AND BELIEF IS CORRECT AND COMPLIES WITH THE MINIMUM PROCEDURES AND STANDARDS ESTABLISHED BY THE VIRGINIA BOARD OF ARCHITECTS, PROFESSIONAL ENGINEERS, LAND SURVEYORS AND CERTIFIED LANDSCAPE ARCHITECTS.

SIGNED: C.E. Newbaker, III
C.E. NEWBAKER III, L.S.# 1380