

JACOB'S SPRINGS

COUNTY OF YORK, VIRGINIA
COLONIAL SURVEY ASSOCIATES, P.C.
LAND SURVEYING & LAND PLANNING
7100 GEO. WASHINGTON MEM. HWY
YORKTOWN, VIRGINIA 23692
898-4149

SCALE: 1"=100' DATE: 3/23/90
SHEET 2 OF 2

N/F
T.J. PURDEY, EST.
SEE D.B. 138, PG. 27
D.B. 133, PG. 42

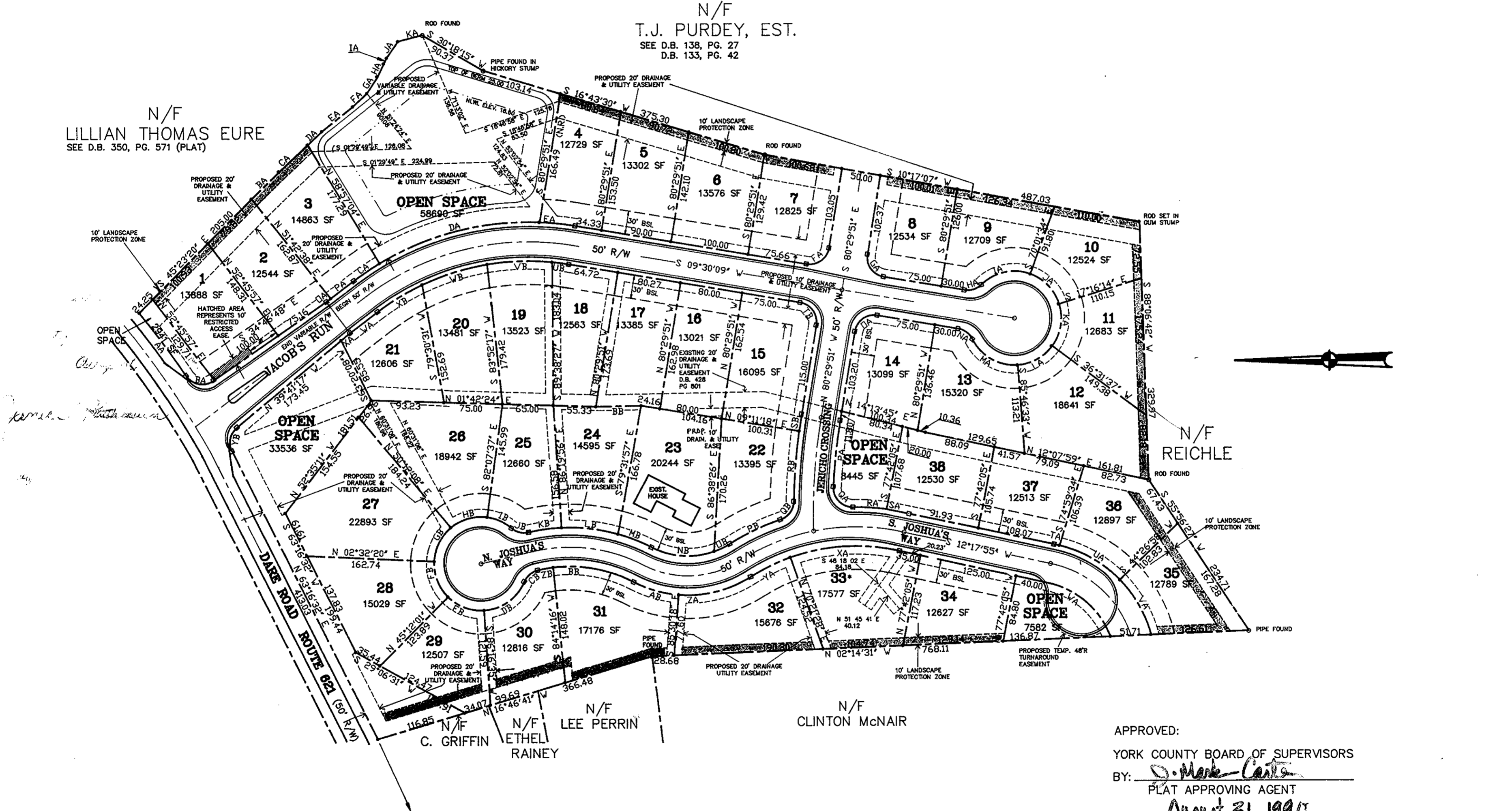
N/F
LILLIAN THOMAS EURE
SEE D.B. 350, PG. 571 (PLAT)

N/F
REICHLER

N/F
CLINTON McNAIR

N/F
LEE PERRIN

N/F
C. GRIFFIN
N/F
ETHEL RAINEY



2175' TO INTERSECTION
WITH ROUTE 17

* EASEMENT SHOWN HEREON (LOT 33) IS
TO BE DEDICATED TO THE JACOB'S SPRINGS
HOMEOWNERS ASSOCIATION, INC.

APPROVED:
YORK COUNTY BOARD OF SUPERVISORS
BY: J. Mark Carter
PLAT APPROVING AGENT
DATE: August 31, 1990

STATE OF VIRGINIA
COUNTY OF YORK
IN THE CLERK'S OFFICE OF THE CIRCUIT COURT FOR THE COUNTY
OF YORK THE 31st DAY OF August, 1990 THIS
MAP WAS PRESENTED AND ADMITTED TO RECORD AS THE LAW
DIRECTS IN PLAT BOOK 11, PAGE 241.
TESTE: NANCY R. KANE, CLERK
CLERK
BY: Cecil Prosser, Deputy Clerk
3:16 P.M.

- NOTES:
- 1) A 10' DRAINAGE, SLOPE, UTILITY EASEMENT IS DEDICATED TO YORK COUNTY ALONG THE FRONT OF ALL LOTS & OPEN SPACES.
 - 2) OPEN SPACE TO BE HEREBY DEDICATED TO JACOB'S SPRINGS HOMEOWNERS ASSOCIATION, INC. AND DEDICATION RECORDED HERE WITH.
 - 3) LOTS 7 & 8 SHALL BE SERVED FROM JACOB'S RUN.
 - 4) THE 10' PERIMETER LANDSCAPE BUFFER IS SHADED.