

Plat Book No. 11 Page 328  
 Filed in the Clerk's Office, Circuit Court, York Co., Va.  
 the 21<sup>st</sup> day of June 1991  
 Teste: 9:53 AM  
 Nancy B. Kane, Clerk  
*James D. ...* D.C.

NOTE: UTILITIES ABOVE AND BELOW GROUND ARE NOT SHOWN HEREON.

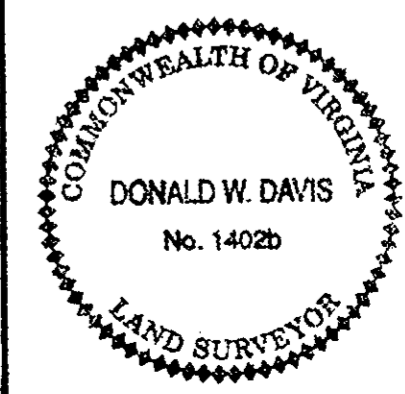
LEGAL REFERENCES: D.B. 181, PG. 671  
 D.B. 209, PG. 135  
 D.B. 130, PG. 96  
 D.B. 117, PG. 571  
 D.B. 119, PG. 221  
 P.B. 9, PG. 127  
 P.B. 9, PG. 260

AREA TABLE: PARCEL A ..... 2.3622 AC.  
 PARCEL B ..... 1.2746 AC.  
 PARCEL C ..... 1.1100 AC.  
 LOT 1A ..... 0.5880 AC.  
 LOT 4A ..... 0.5858 AC.  
 LOTS 6A & 7A ..... 1.3984 AC.  
 TOTAL AREA .... 7.2690 AC.

NOTE: BOUNDARY INFORMATION SHOWN HEREON IS COMPILED FROM VARIOUS PLATS AND DOES NOT REPRESENT A CURRENT BOUNDARY SURVEY.

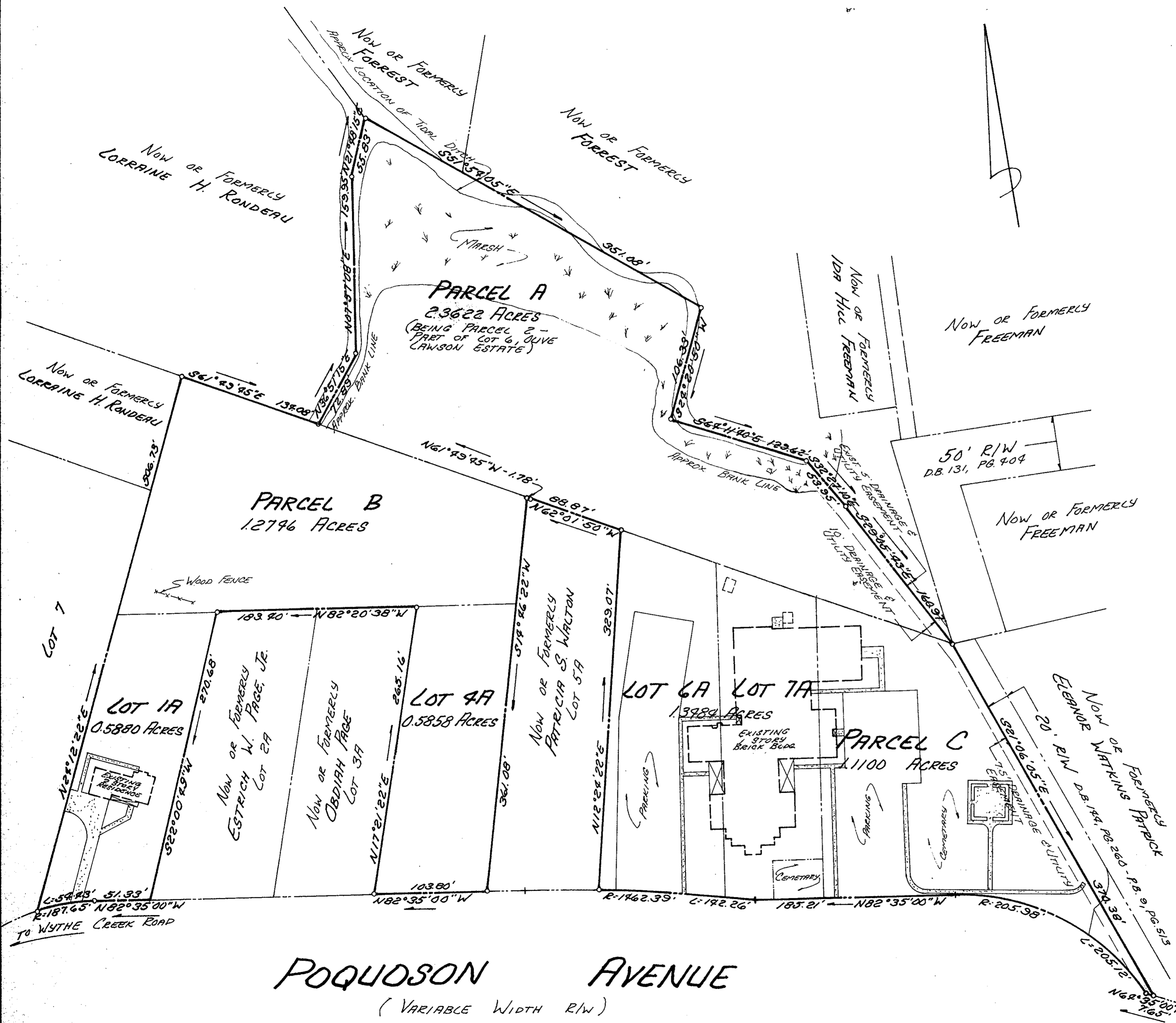
COMPILED PART OF  
 LOTS 1A, 4A, 6A & 7A  
 SUBDIVISION OF  
 F.W. CARMINES ESTATE  
 & PARCEL A CONTAINING 2.3622 AC.,  
 PARCEL B CONTAINING 1.2746 AC. &  
 PARCEL C CONTAINING 1.1100 AC.  
 CITY OF POQUOSON, VIRGINIA

SCALE: 1" = 60' DATE: 28 MAY 91



DAVIS & ASSOCIATES  
 SURVEYORS - PLANNERS  
 4033 GEORGE WASHINGTON  
 MEMORIAL HIGHWAY  
 GRAFTON, VIRGINIA 23692

SHEET 1 OF 1



POQUOSON AVENUE  
 (VARIABLE WIDTH R/W)