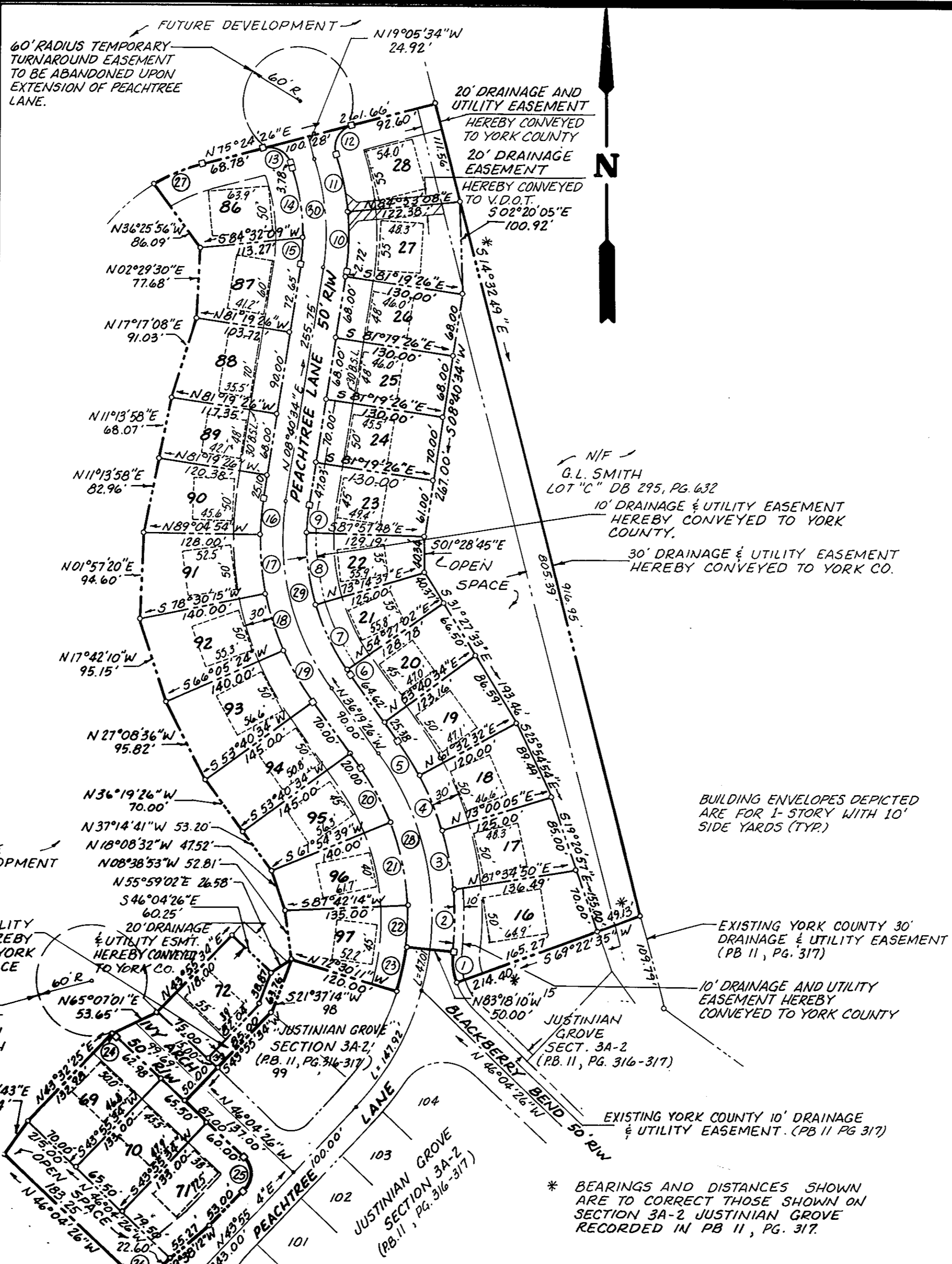


CURVE DATA

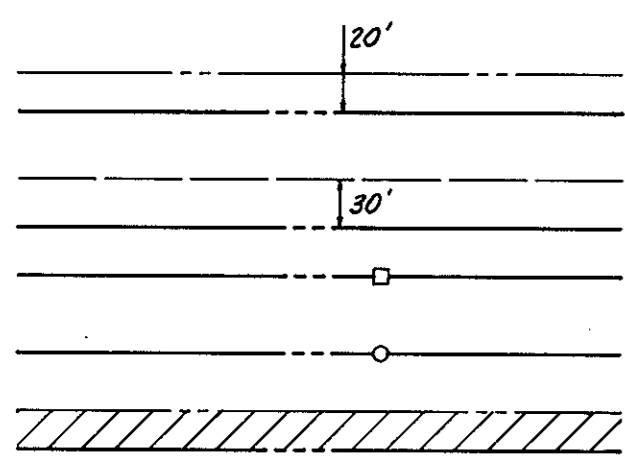
Δ	DELTA	RADIUS	LENGTH	TANGENT	CHORD	CHORD BEARING
1	27°11'12"	75.00'	35.59'	18.14	35.25'	N 06°53'46" W
2	12°14'12"	325.00'	69.41'	34.84'	69.28'	N 00°34'44" E
3	11°27'33"	325.00'	65.00'	32.61'	64.89'	N 11°16'08" W
4	11°27'33"	325.00'	65.00'	32.61'	64.89'	N 22°43'41" W
5	07°51'58"	325.00'	44.62'	22.34'	44.58'	N 32°23'27" W
6	00°46'29"	250.00'	3.38'	1.69'	3.38'	N 35°56'12" W
7	18°47'35"	250.00'	82.00'	41.37'	81.63'	N 26°09'10" W
8	18°47'35"	250.00'	82.00'	41.37'	81.63'	N 07°21'35" W
9	06°38'22"	250.00'	28.97'	14.50'	28.95'	N 05°21'23" E
10	13°47'27"	281.81'	67.83'	34.08'	67.67'	N 01°46'51" E
11	13°12'55"	281.81'	65.00'	32.64'	64.86'	N 11°43'20" W
12	93°44'13"	25.00'	40.90'	26.69'	36.49'	N 28°32'19" E
13	85°30'00"	25.00'	37.31'	23.11'	33.94'	N 61°50'34" W
14	19°46'24"	231.81'	80.00'	40.40'	79.60'	N 09°12'22" W
15	07°59'44"	231.81'	32.35'	16.20'	32.32'	N 04°40'42" E
16	07°45'28"	300.00'	40.62'	20.34'	40.59'	N 04°47'50" E
17	12°24'51"	300.00'	65.00'	32.63'	64.87'	N 05°17'20" W
18	12°24'51"	300.00'	65.00'	32.63'	64.87'	N 17°42'10" W
19	12°24'51"	300.00'	65.00'	32.63'	64.87'	N 30°07'01" W
20	14°14'04"	275.00'	68.32'	34.34'	68.15'	N 29°12'24" W
21	19°47'35"	275.00'	95.00'	47.98'	94.53'	N 12°11'33" W
22	08°59'36"	275.00'	43.16'	21.63'	43.12'	N 02°12'03" E
23	10°47'59"	275.00'	51.84'	25.99'	51.76'	N 12°05'50" E
24	00°23'08"	1176.41'	7.92'	3.96'	7.92'	S 01°04'26" E
25	90°00'00"	25.00'	39.27'	25.00'	35.36'	S 01°04'26" E
26	84°17'22"	25.00'	36.78'	22.62'	33.55'	N 88°13'07" W
27	16°14'26"	205.00'	58.11'	29.25'	57.91'	N 67°17'13" E
28	43°01'27"	300.00'	225.27'	118.25'	220.02'	N 14°48'43" W
29	45°00'00"	275.00'	215.98'	113.91'	105.24'	N 13°49'26" W
30	27°46'08"	256.81'	124.47'	63.48'	123.25'	N 05°12'30" W



RECORD PLAT
 FOR:
 COVENTRY PLANNED DEVELOPMENT
 JUSTINIAN GROVE
 SECTION 3B
 COUNTY OF YORK, VIRGINIA
 The DeYoung-Johnson Group, Inc.
 P.O. Box 3505
 Williamsburg, Virginia 23187

SCALE: 1"=100'
 APRIL 5, 1991
 SHEET 2 OF 2

LEGEND



EASEMENTS SHOWN THIS ARE HEREBY CONVEYED TO THE COUNTY OF YORK FOR DRAINAGE & UTILITIES

MINIMUM BUILDING SETBACK LINE SHOWN THIS

CONCRETE MONUMENT SHOWN THIS

IRON PIPE SHOWN THIS

EASEMENTS SHOWN THIS ARE HEREBY CONVEYED TO THE VIRGINIA DEPARTMENT OF TRANSPORTATION (VDOT).

NOTES:

1. OPEN SPACE / COMMON AREAS ARE TO BE CONVEYED TO THE COVENTRY HOMEOWNER'S ASSOCIATION.
2. PROPERTY IDENTIFIED ON TAX MAP AS ASSESSOR'S PARCEL NO. 37-(7)-A.

APPROVED
 YORK COUNTY BOARD OF SUPERVISORS
 BY: J. Mark Cate
 PLAT APPROVING AGENT
 DATE: October 9, 1991

STATE OF VIRGINIA
 COUNTY OF YORK
 IN THE CLERK'S OFFICE OF THE CIRCUIT COURT FOR THE COUNTY OF YORK THE 10th DAY OF October, 1991
 THIS MAP WAS PRESENTED AND ADMITTED TO RECORD AS THE LAW DIRECTS IN PLAT BOOK 11, PAGE 354.
 TESTE: NANCY B. KANE, CLERK
 CLERK
 BY: Catherine Bender, D.C.