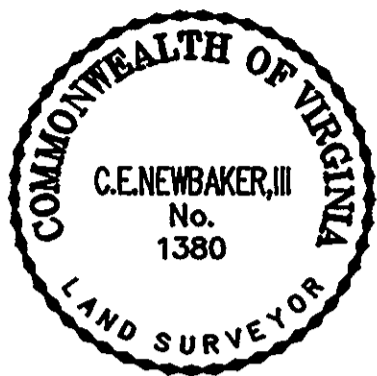


THE UNDERSIGNED CERTIFIES THAT THIS PLAN IS ACCURATE AND COMPLIES WITH THE PROVISIONS OF THE CODE OF VIRGINIA SECTION 55-79.58 (b) AND ALL UNITS DEPICTED HEREON HAVE BEEN SUBSTANTIALLY COMPLETED.

SIGNED: C.E. Newbaker III DATE: 10-17-91
 C.E. NEWBAKER III, L.S. 1380



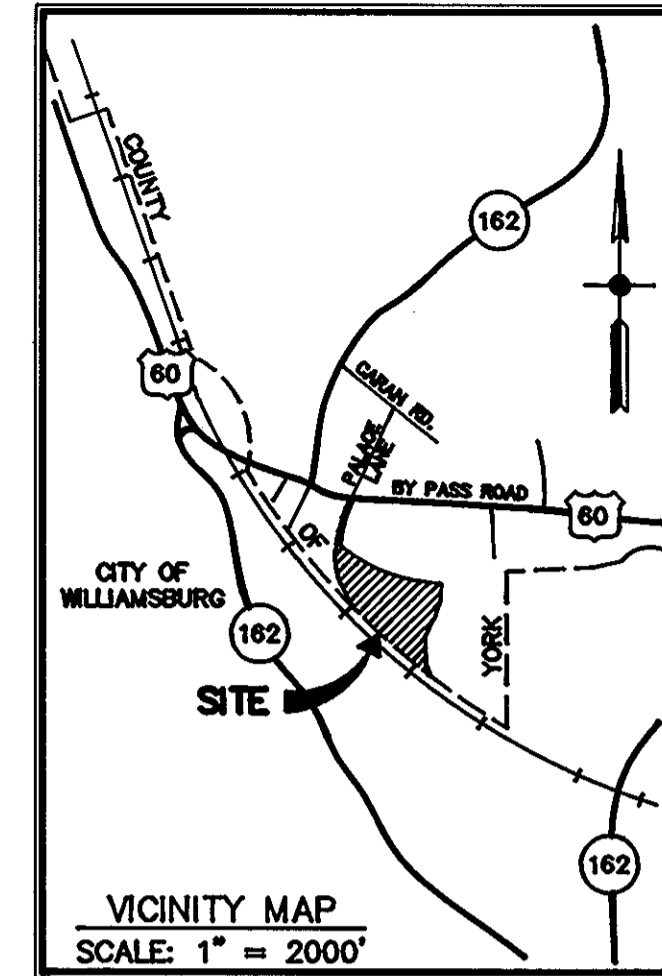
NOTES:
 1. ALL BUILDING DIMENSIONS SHOWN HEREON ARE EXTERIOR DIMENSIONS AND ARE IN FEET.

PARCEL B = 17.630 ACRES

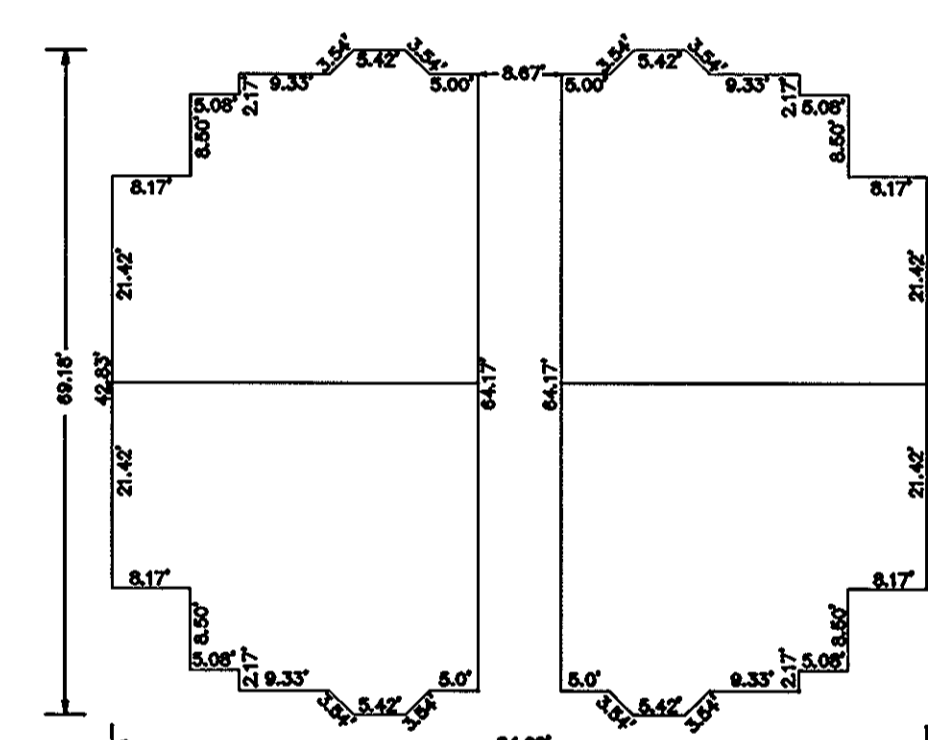
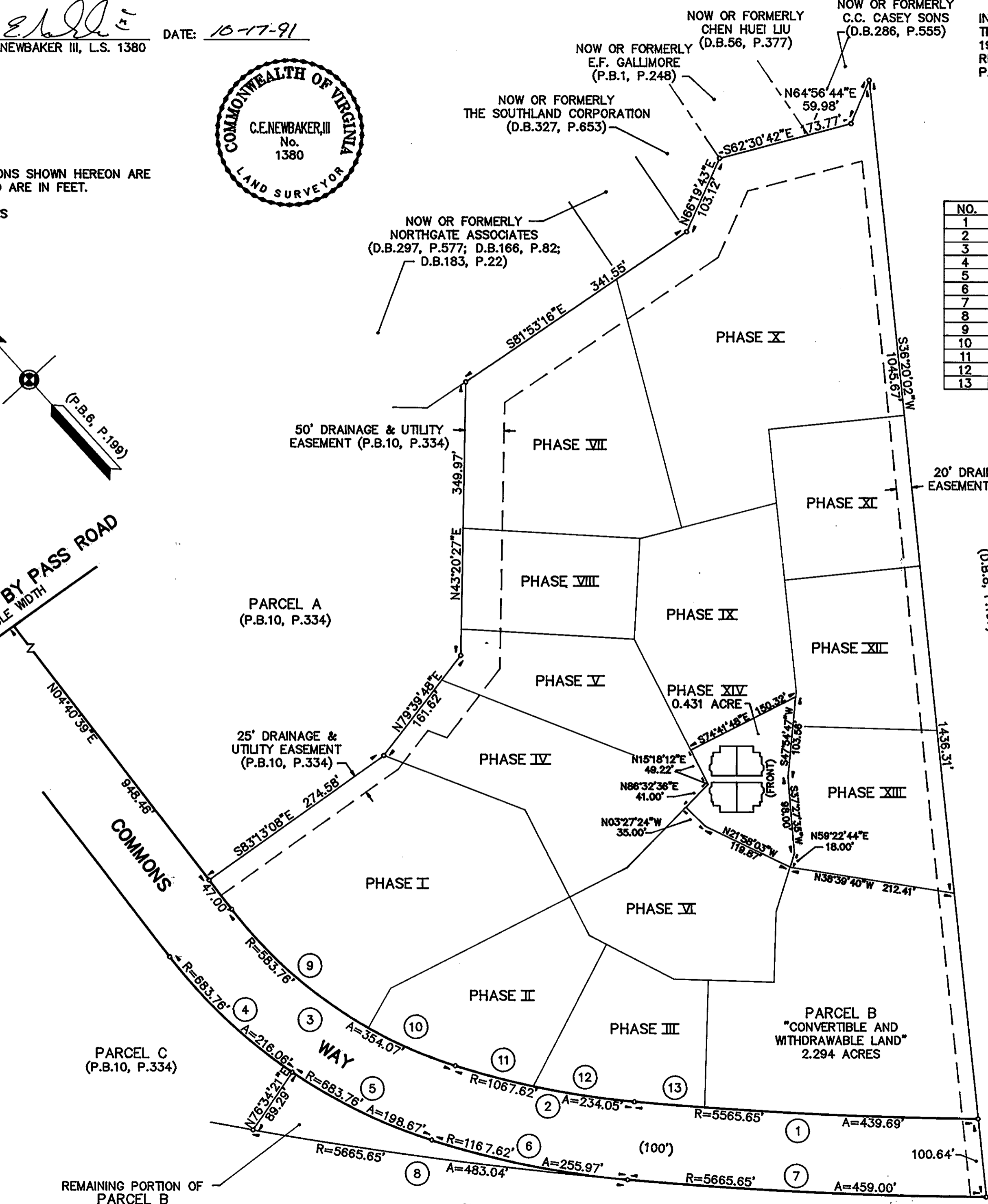
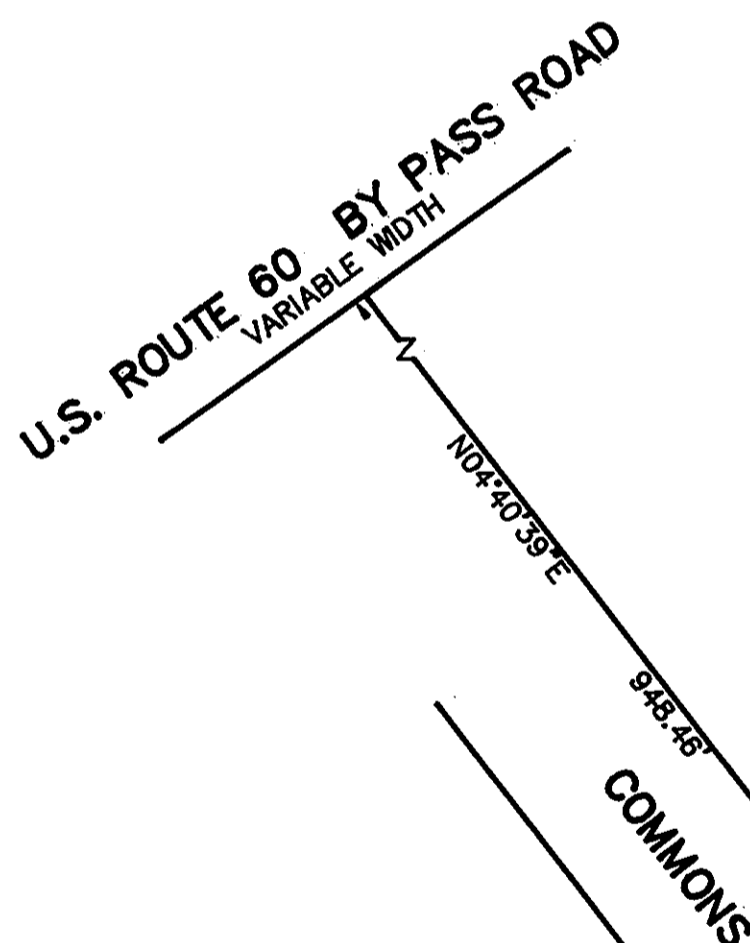
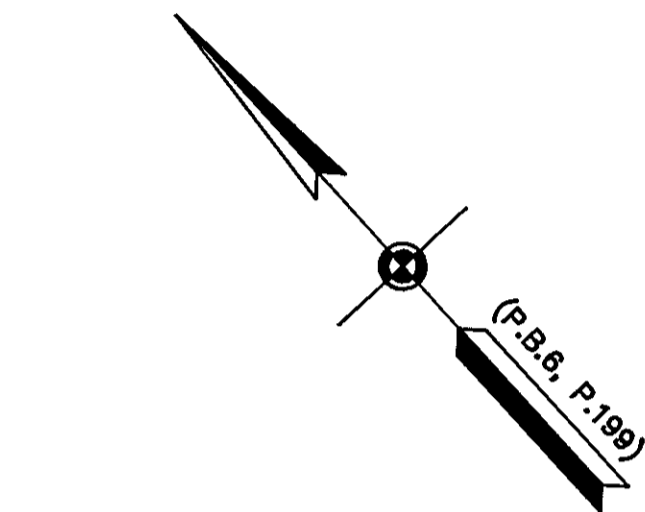
STATE OF VIRGINIA
 COUNTY OF YORK

IN THE CLERK'S OFFICE OF THE CIRCUIT COURT FOR THE COUNTY OF YORK THE 14th DAY OF November 1991, THIS PLAT WAS PRESENTED AND ADMITTED TO RECORD AS THE LAW DIRECTS IN PLAT BOOK 11, PAGE 264.

TESTE: NANCY B. KANE, CLERK
 BY: Karolyn J. Williams, Jr.



CURVE TABLE				
NO.	RADIUS	DELTA	ARC	TANGENT
1	5565.65'	04°31'35"	439.69'	219.96'
2	1067.62'	12°33'39"	234.05'	117.50'
3	583.76'	34°45'06"	354.07'	182.67'
4	683.76'	18°06'16"	216.06'	108.94'
5	683.76'	16°38'48"	198.67'	100.03'
6	1167.62'	12°33'39"	255.97'	128.50'
7	5665.65'	04°38'30"	459.00'	229.62'
8	5665.65'	04°53'06"	483.04'	241.67'
9	583.76'	22°51'55"	232.97'	118.05'
10	583.76'	11°53'11"	121.11'	60.77'
11	1067.62'	05°32'25"	103.23'	51.66'
12	1067.62'	07°01'14"	130.82'	65.49'
13	5565.65'	00°55'36"	90.00'	45.00'



THIS PROPERTY AS DEPICTED ON THIS PLAT DOES NOT VIOLATE THE PROVISIONS OF THE YORK COUNTY SUBDIVISION ORDINANCE

SIGNED: J. Mark Carter
 TITLE: DIR. OF PLANNING & COM. DEV.
 DATE: November 4, 1991

EXHIBIT 0
 PHASE XIV
 SHEET 1 OF 4
 PLAT OF
WILLIAMSBURG COMMONS CONDOMINIUMS
 FOR
 WILLIAMSBURG COMMONS, INC.
 A VIRGINIA CORPORATION
 BRUTON DISTRICT - COUNTY OF YORK, VIRGINIA
 SCALE: 1" = 100' OCTOBER 16, 1991

THE SIRINE GROUP, LTD.
 SURVEYORS • ENGINEERS • PLANNERS
 P.O. BOX 450, ROUTE 17
 WHITE MARSH, VIRGINIA 23183