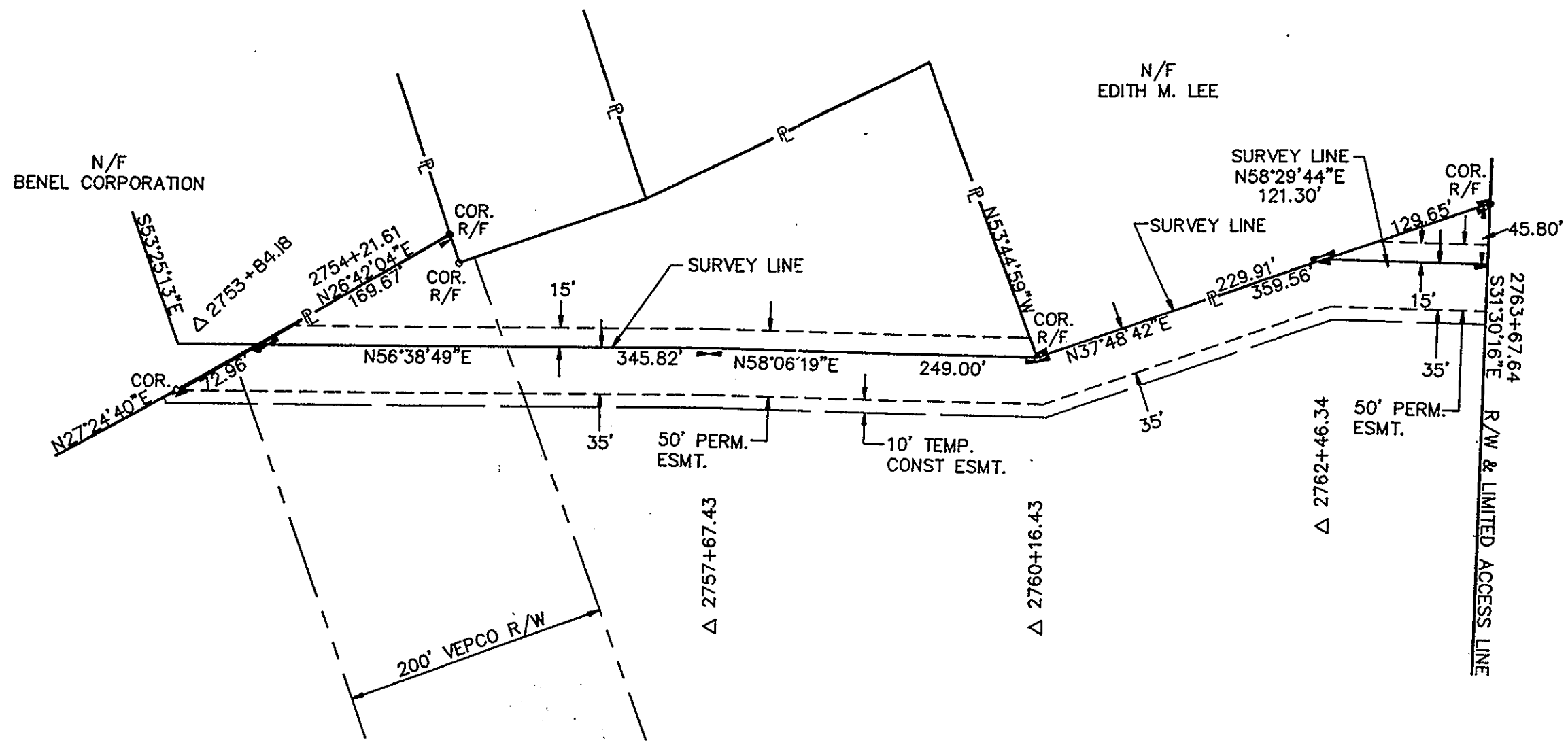
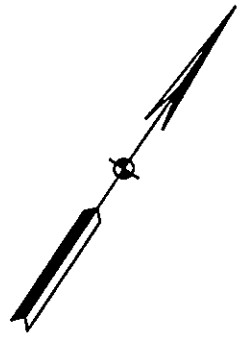


310A

PLEASURAMA/WILLIAMSBURG, INC.



INTERSTATE 64 & ROUTE 168  
(VARIABLE WIDTH)

AREA INSIDE VEPCO R/W:  
 PERM: 0.23 AC.  
 TEMP: 0.05 AC.

AREA OUTSIDE VEPCO R/W:  
 PERM: 0.79 AC.  
 TEMP: 0.18 AC.

Filed in the Clerk's Office, Circuit Court, York Co., Va.  
 the 2nd day of December 1991

Teste:  
 Nancy B. Kane, Clerk  
 Plat Book II page 375

**Virginia Natural Gas**  
 VNG LATERAL

PLAT TO ACCOMPANY RIGHT-OF-WAY  
 AGREEMENT WITH  
**PLEASURAMA/WILLIAMSBURG, INC.**

DISTRICT/TOWNSHIP COUNTY STATE  
 BRUTON YORK VA

SURVEYED BY SCHNEIDER ENGINEERS

MERIDIAN SOURCE: VIRGINIA COORDINATE SYSTEM OF 1927 (SOUTH ZONE)

4	3	2	1
			REVISED ESMT. & R

SCALE 1" = 100'	DATE 6/25/00	NO. 310A
--------------------	-----------------	-------------