

THE UNDERSIGNED CERTIFIES THAT THIS PLAN IS ACCURATE AND COMPLIES WITH THE PROVISIONS OF THE CODE OF VIRGINIA SECTION 55-79.58 (b) AND ALL UNITS DEPICTED HEREON HAVE BEEN SUBSTANTIALLY COMPLETED.

NOTES:

- 1. ALL BUILDING DIMENSIONS SHOWN HEREON ARE EXTERIOR DIMENSIONS AND ARE IN FEET.

STATE OF VIRGINIA
COUNTY OF YORK

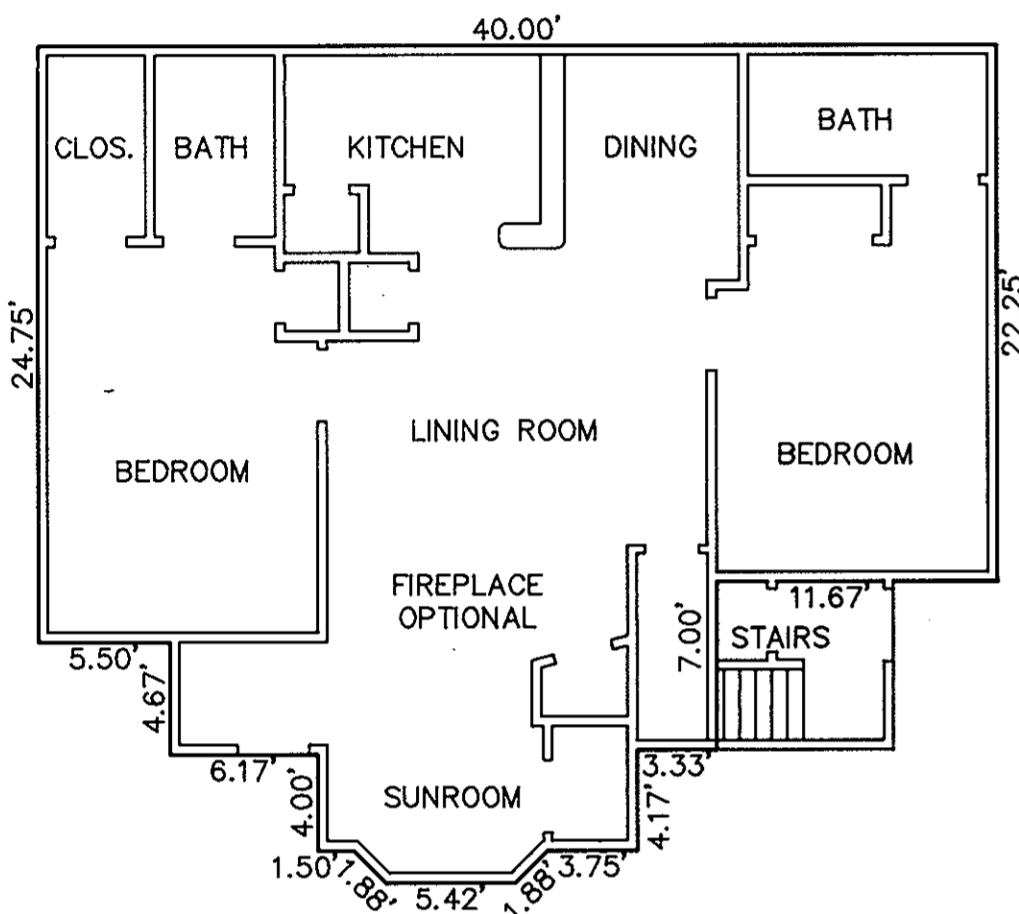
IN THE CLERK'S OFFICE OF THE CIRCUIT COURT FOR THE COUNTY OF YORK THE 31st DAY OF January, 1992 THIS PLAT WAS PRESENTED AND ADMITTED TO RECORD AS THE LAW DIRECTS IN PLAT BOOK 11, PAGE 399. 12 noon

SIGNED: Kenton B. Patrick DATE: 1/28/92
KENTON B. PATRICK, P.E.

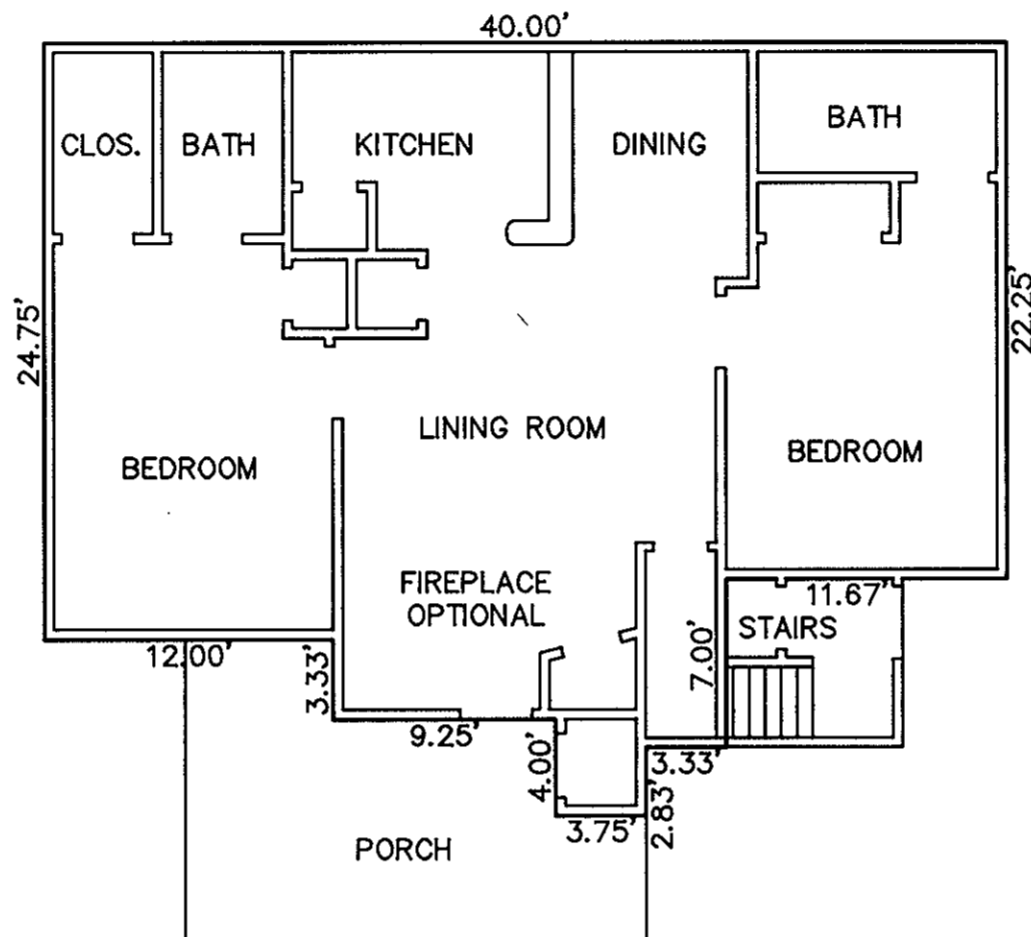


TESTE: NANCY B. KANE, CLERK

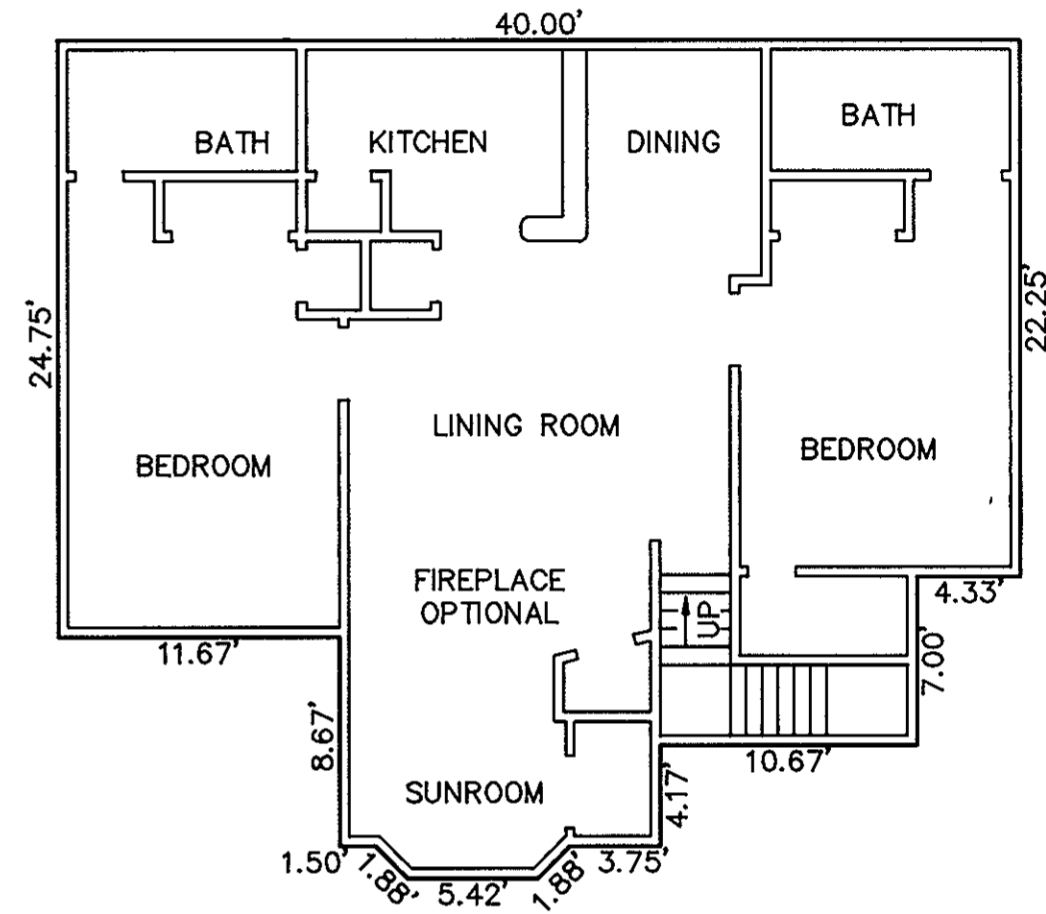
BY: [Signature]



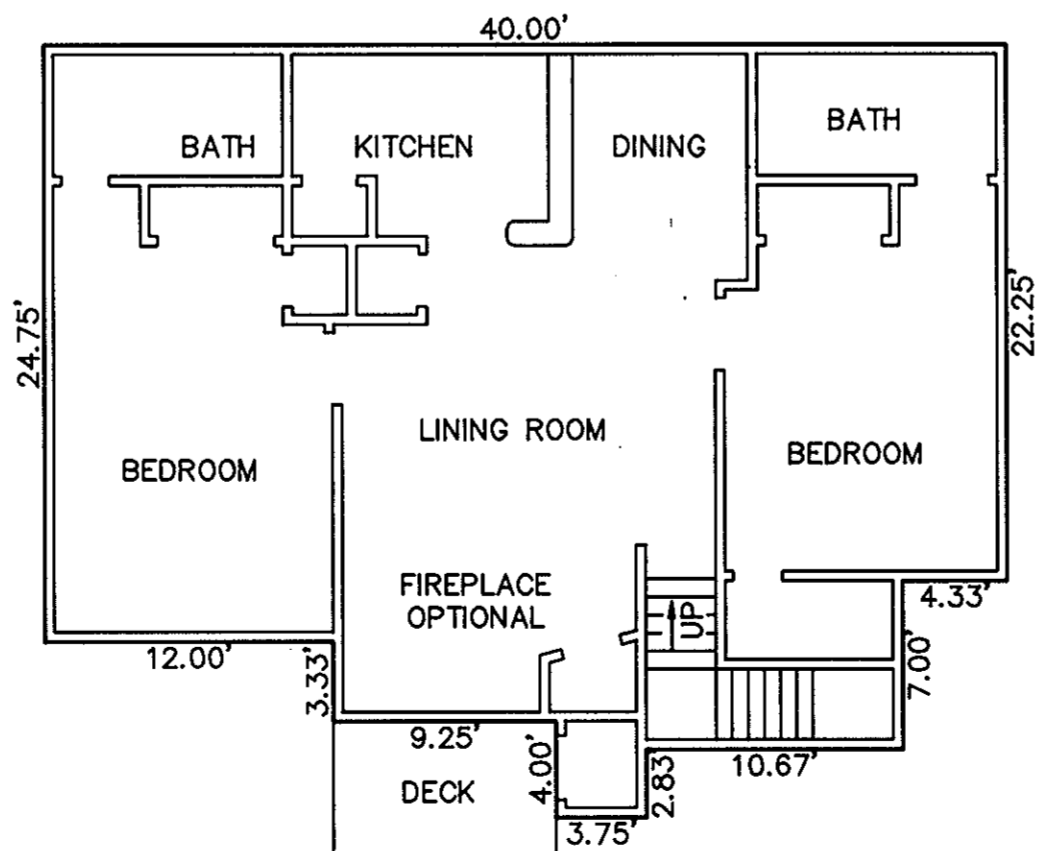
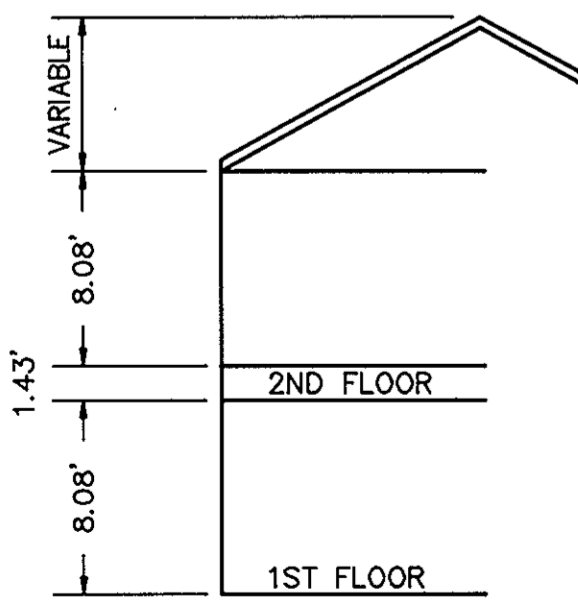
MODEL D - TYPICAL UNITS A, C & E
1ST FLOOR
W/ SUNROOM



MODEL D - TYPICAL UNITS B, D & F
1ST FLOOR
W/ PATIO



MODEL D - TYPICAL UNITS G, I & K
2ND FLOOR
W/ SUNROOM



MODEL D - TYPICAL UNITS H, J & L
2ND FLOOR W/ PORCH

EXHIBIT P
PHASE XV
SHEET 2 OF 4
PLAT OF
WILLIAMSBURG COMMONS CONDOMINIUMS
FOR
WILLIAMSBURG COMMONS, INC.,
A VIRGINIA CORPORATION
BRUTON DISTRICT - COUNTY OF YORK, VIRGINIA
SCALE: 1/8" = 1'-0" JANUARY 27, 1992



GRAPHIC SCALE
THE SIRINE GROUP, LTD.
SURVEYORS • ENGINEERS • PLANNERS
P.O. BOX 450, ROUTE 17
WHITE MARSH, VIRGINIA 23183