

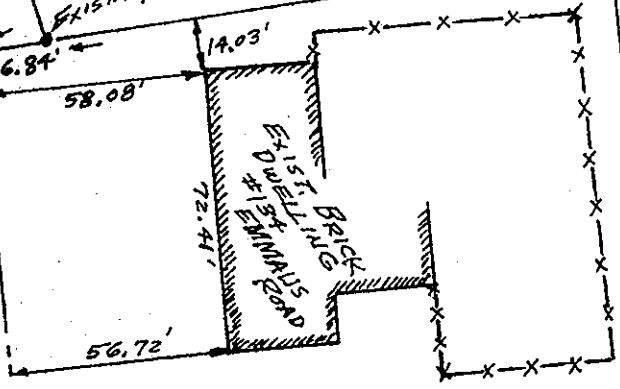
"LAMB'S POINT" SUBDIVISION SEC. ONE

N67°59'01"E (TOTAL)

343.73'

326.89'

Filed in the Clerks Office, Circuit Court, York Co., Va. the 14 day of Feb. 1992
Taste: Nancy B. Kane, Clerk



William S. & Maureen B. Moore
Remainder Parcel

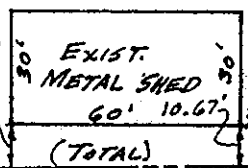
"D" = 78,870.9ft² = 1.81 Ac.

EMMAUS

FREEMOOR ESTATES LOT 12

New Property Line

N76°22'35"E 150.00'



Eva M. Moore
PARCEL E-2
28,025.7ft² (TOTAL)

Eva M. Moore
PARCEL E-1
26,700ft² (TOTAL)

25' EXIST. DRAINAGE & UTILITY EASEMENT (CITY OF POQUOSON)

10' Hereby dedicated to the City of Poquoson for Road Widening & Drainage
10' Drainage Easement (Dedicated to the City of Poquoson)

CITY OF POQUOSON APPROVED

DATE 11/15/91

Parcel "B" DB. 421-19.9

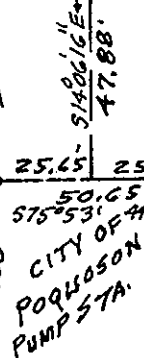
Parcel "A" DB. 421-19.9

300.44' found
300.51' (recorded)

504°56'47"E (found)
504°56'08"E (recorded)

85.12' (found)
(recorded)

67.73' 6.09'



FREEMOOR DRIVE

ROAD SUBDIVISION LOT I

ROAD

EXIST. P.R.P.

Pipe set

Exist. Pipe

Pipe set

Pipe set

Pipe set

Pipe set

Exist. 15" DRAIN PIPE

Exist. Pipe