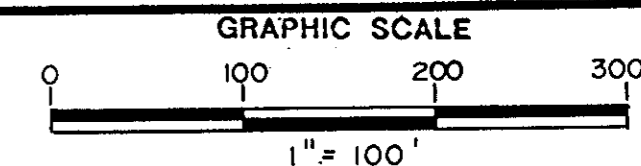


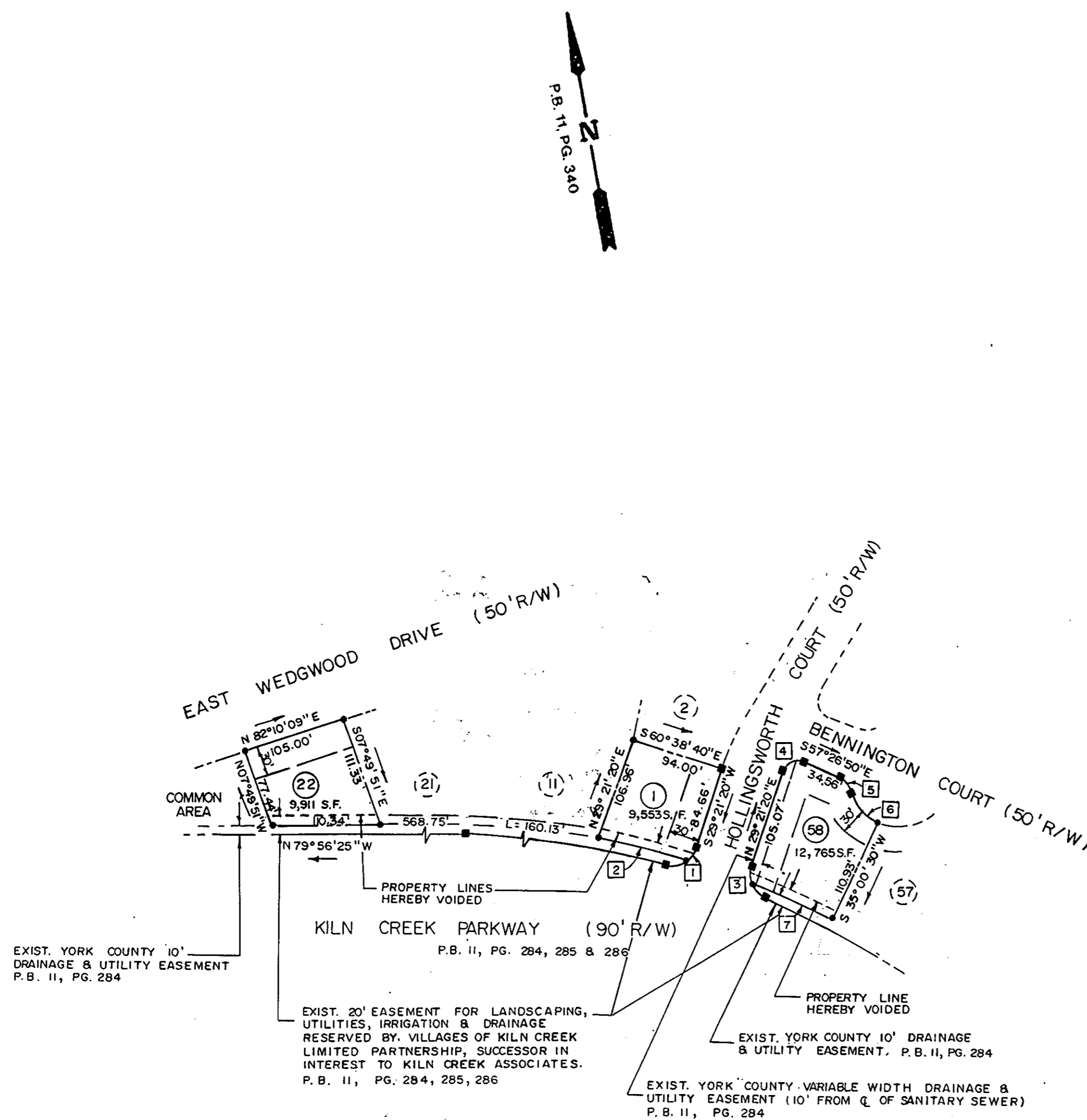
RESUBDIVISION OF
THE VILLAGES OF KILN CREEK
SINGLE FAMILY AREA 6
HOLLINGSWORTH
LOTS 1, 22 & 58
COUNTY OF YORK, VIRGINIA

DATE: MARCH 17, 1992 SHEET 2 OF 2 SCALE: 1"=100'

SRA SLEDD, RUNEY & ASSOCIATES, P.C.
ENGINEERS PLANNERS SURVEYORS
11832 ROCK LANDING DRIVE, SUITE 203
NEWPORT NEWS, VIRGINIA 23606
(804) 873-3386



REFERENCE: PLAT BOOK II, PAGES 339, 340, 341



EXIST. YORK COUNTY 10' DRAINAGE & UTILITY EASEMENT P.B. II, PG. 284

EXIST. 20' EASEMENT FOR LANDSCAPING, UTILITIES, IRRIGATION & DRAINAGE RESERVED BY VILLAGES OF KILN CREEK LIMITED PARTNERSHIP, SUCCESSOR IN INTEREST TO KILN CREEK ASSOCIATES. P.B. II, PG. 284, 285, 286

EXIST. YORK COUNTY VARIABLE WIDTH DRAINAGE & UTILITY EASEMENT (10' FROM Q OF SANITARY SEWER) P.B. II, PG. 284

APPROVED:
YORK COUNTY BOARD OF SUPERVISORS
BY: Jamal Carter
PAT. APPROVING AGENT
DATE: April 13, 1992

STATE OF VIRGINIA
COUNTY OF YORK

IN THE CLERK'S OFFICE OF THE CIRCUIT COURT FOR THE COUNTY OF YORK, THE 14th DAY OF April, 1992, THIS MAP WAS PRESENTED AND ADMITTED TO RECORD AS THE LAW DIRECTS IN PLAT BOOK 11, PAGE 411.
TESTE: NANCY B. KANE, CLERK
CLERK
BY: Karen D. Kellogg

TABLE OF NEW/FORMER LOT AREAS

LOT NO.	NEW AREA	FORMER AREA
LOT 1	9,553 S.F.	8,627 S.F.
LOT 22	9,911 S.F.	8,807 S.F.
LOT 58	12,765 S.F.	11,832 S.F.

CURVE DATA TABLE

Curve	Delta	Radius	Arc	Tangent	Chord	Chord Bearing
0001	033 54 24	25.00	14.79	7.62	14.58	S 46 18 32 W
0002	006 02 35	855.00	90.18	45.13	90.14	N 65 57 43 W
0003	033 54 25	25.00	14.79	7.62	14.58	N 12 24 08 E
0004	093 11 50	15.00	24.40	15.86	21.80	N 75 57 15 E
0005	049 30 26	25.00	21.60	11.53	20.94	S 32 41 37 E
0006	047 03 00	52.00	42.70	22.64	41.51	S 31 27 54 E
0007	006 03 12	855.00	90.33	45.21	90.29	N 55 19 19 W