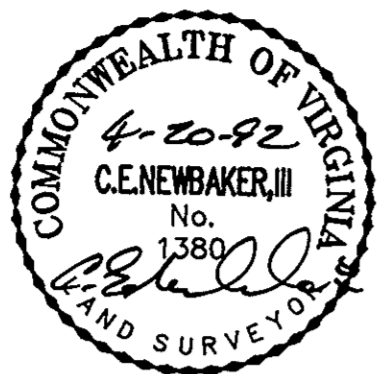


THE UNDERSIGNED CERTIFIES THAT THIS PLAN IS ACCURATE AND COMPLIES WITH THE PROVISIONS OF THE CODE OF VIRGINIA SECTION 55-79.58 (a) AND ALL UNITS DEPICTED HEREON HAVE BEEN SUBSTANTIALLY COMPLETED.

SIGNED: *C.E. Newbaker III* DATE: 4-20-92  
 C.E. NEWBAKER III, L.S. 1380



NOTES:  
 1. ALL BUILDING DIMENSIONS SHOWN HEREON ARE EXTERIOR DIMENSIONS AND ARE IN FEET.

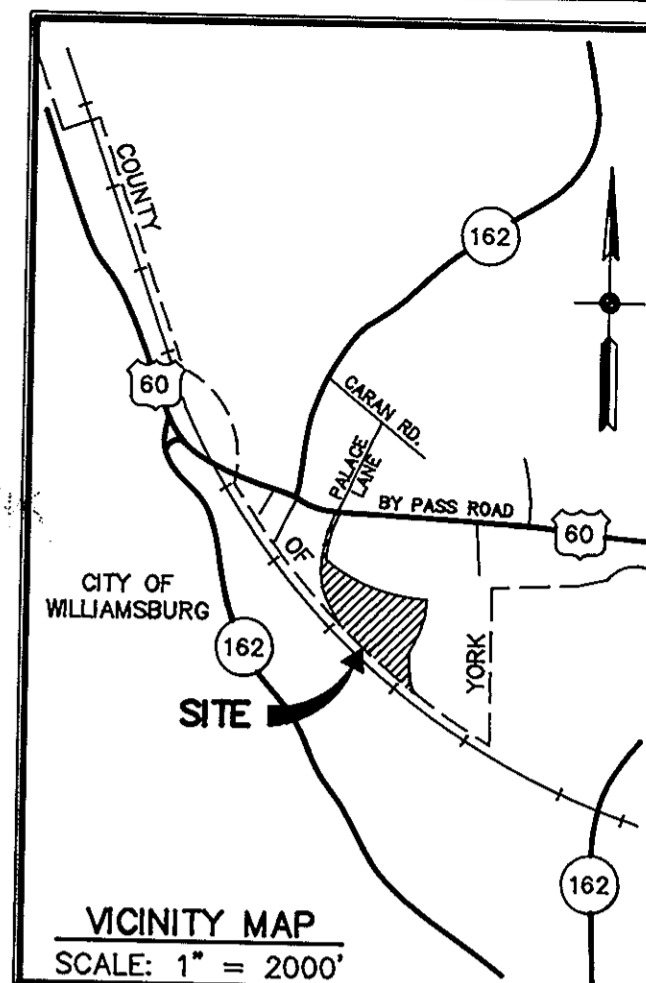
PARCEL B = 17.630 ACRES

STATE OF VIRGINIA  
 COUNTY OF YORK

IN THE CLERK'S OFFICE OF THE CIRCUIT COURT FOR THE COUNTY OF YORK THE 20th DAY OF April, 1992, THIS PLAT WAS PRESENTED AND ADMITTED TO RECORD AS THE LAW DIRECTS IN PLAT BOOK 11, PAGE 412.  
 8:29 AM

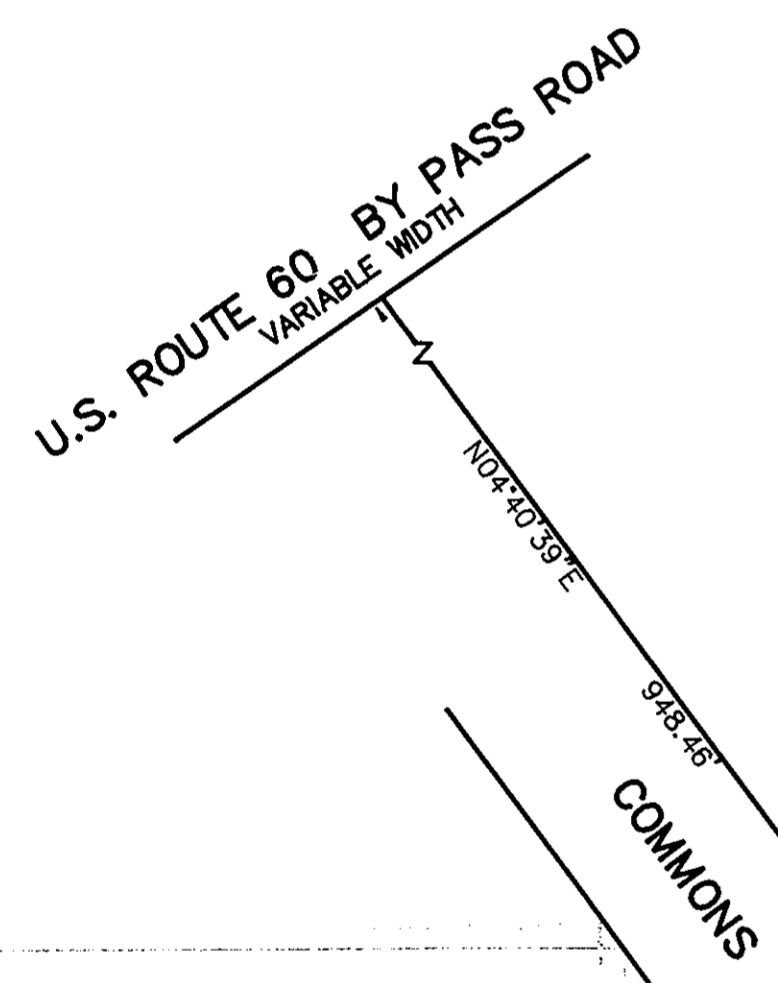
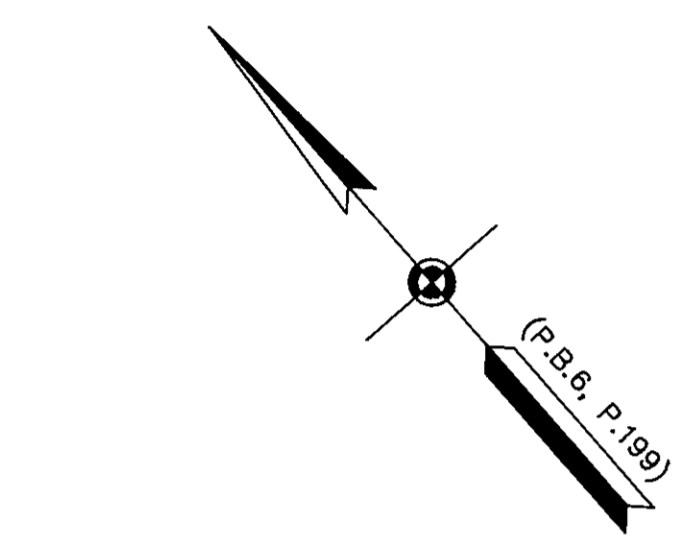
TESTE: NANCY B. KANE, CLERK

BY: Karen Kelly Watkins, D.C.



CURVE TABLE

NO.	RADIUS	DELTA	ARC	TANGENT
1	5565.65'	04°31'35"	439.69'	219.96'
2	1067.62'	12°33'39"	234.05'	117.50'
3	583.76'	34°45'06"	354.07'	182.67'
4	683.76'	18°06'16"	216.06'	108.94'
5	683.76'	16°38'48"	198.67'	100.03'
6	1167.62'	12°33'39"	255.97'	128.50'
7	5665.65'	04°38'30"	459.00'	229.62'
8	5665.65'	04°53'06"	483.04'	241.67'
9	583.76'	22°51'55"	232.97'	118.05'
10	583.76'	11°53'11"	121.11'	60.77'
11	1067.62'	05°32'25"	103.23'	51.66'
12	1067.62'	07°01'14"	130.82'	65.49'
13	5565.65'	00°55'36"	90.00'	45.00'



*D. Mark Cante*  
 April 21, 1992

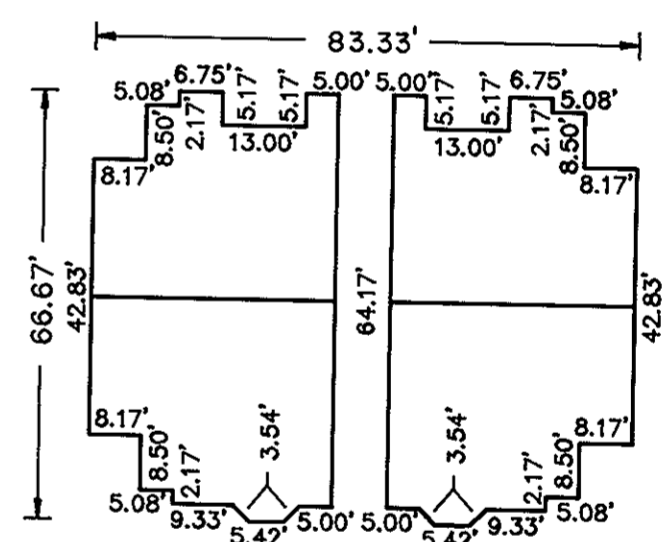
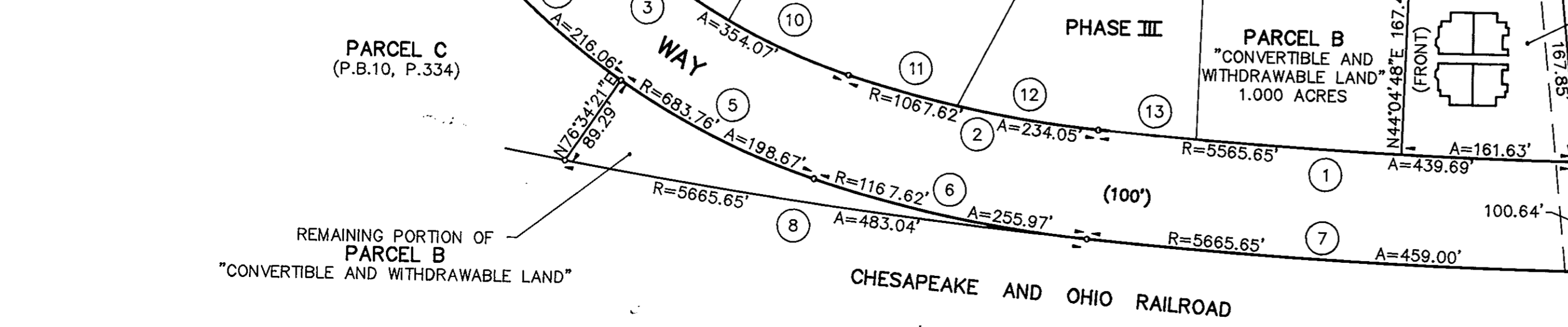


EXHIBIT Q  
 PHASE XVI  
 SHEET 1 OF 5  
 PLAT OF  
**WILLIAMSBURG COMMONS CONDOMINIUMS**  
 FOR  
 WILLIAMSBURG COMMONS, INC.  
 A VIRGINIA CORPORATION  
 BRUTON DISTRICT - COUNTY OF YORK, VIRGINIA  
 SCALE: 1" = 100' APRIL 20, 1992

0 50 100 200 300 400 FEET  
 GRAPHIC SCALE

**THE SIRINE GROUP, LTD.**  
 SURVEYORS • ENGINEERS • PLANNERS  
 P.O. BOX 450, ROUTE 17  
 WHITE MARSH, VIRGINIA 23183