

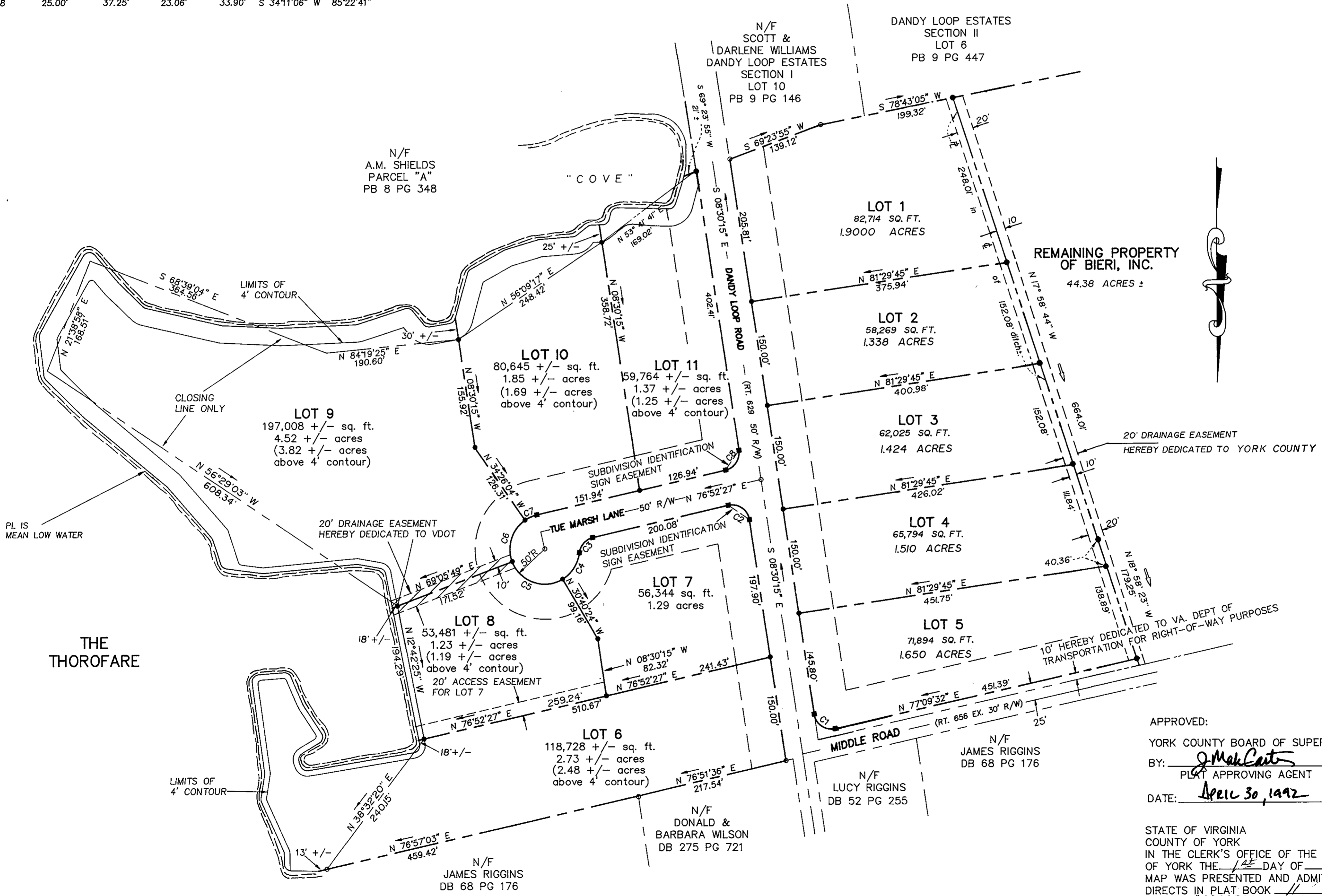
TUE MARSH COVE

COUNTY OF YORK, VIRGINIA
RICKMOND ENGINEERING, INC.
1643-C MERRIMAC TRAIL
WILLIAMSBURG, VIRGINIA 23185

(804) 229-1776
SCALE: 1"=100' DATE: 6/17/91
SHEET 2 OF 2

CURVE DATA TABLE

CURVE	RADIUS	LENGTH	TANGENT	CHORD	BEARING	DELTA
C1	25.00'	41.16'	26.97'	36.67'	S 55°40'21" E	94°20'13"
C2	25.00'	41.29'	27.10'	36.75'	S 55°48'54" E	94°37'19"
C3	25.00'	30.77'	17.68'	28.87'	N 41°36'35" E	70°31'44"
C4	50.00'	46.23'	24.92'	44.61'	N 32°50'09" E	52°58'53"
C5	50.00'	87.07'	59.35'	76.48'	S 70°47'17" E	99°46'14"
C6	50.00'	66.73'	39.39'	61.89'	S 17°19'53" W	76°28'06"
C7	50.00'	18.60'	9.41'	18.49'	S 66°13'11" W	21°18'31"
C8	25.00'	37.25'	23.06'	33.90'	S 34°11'06" W	85°22'41"



APPROVED:
 YORK COUNTY BOARD OF SUPERVISORS
 BY: J. MacCarty
 PLAT APPROVING AGENT
 DATE: April 30, 1992

STATE OF VIRGINIA
 COUNTY OF YORK
 IN THE CLERK'S OFFICE OF THE CIRCUIT COURT FOR THE COUNTY
 OF YORK THE 14th DAY OF May, 1992 THIS
 MAP WAS PRESENTED AND ADMITTED TO RECORD AS THE LAW
 DIRECTS IN PLAT BOOK 11, PAGE 418.
 TESTE: NANCY B. KANE, CLERK
 CLERK
 BY: Carol J. Vosselman, Deputy Clerk