

STATE OF VIRGINIA COUNTY OF YORK
IN THE CLERK'S OFFICE OF THE CIRCUIT COURT FOR THE
COUNTY OF YORK, THE DAY OF 1989, THIS
PLAT WAS PRESENTED AND ADMITTED TO RECORD AS THE LAW DIRECTS
IN PLAT BOOK PAGE

Filed in the Clerk's Office, Circuit Court, York Co., Va.
the day of 1989 SEE SHEET 1 FOR NOTES

VIRGINIA:
IN THE CLERK'S OFFICE OF THE CITY OF NEWPORT NEWS,
THE DAY OF 1989, THIS PLAT WAS PRESENTED
AND ADMITTED TO RECORD AS THE LAW DIRECTS IN PLAT BOOK
AT PAGE

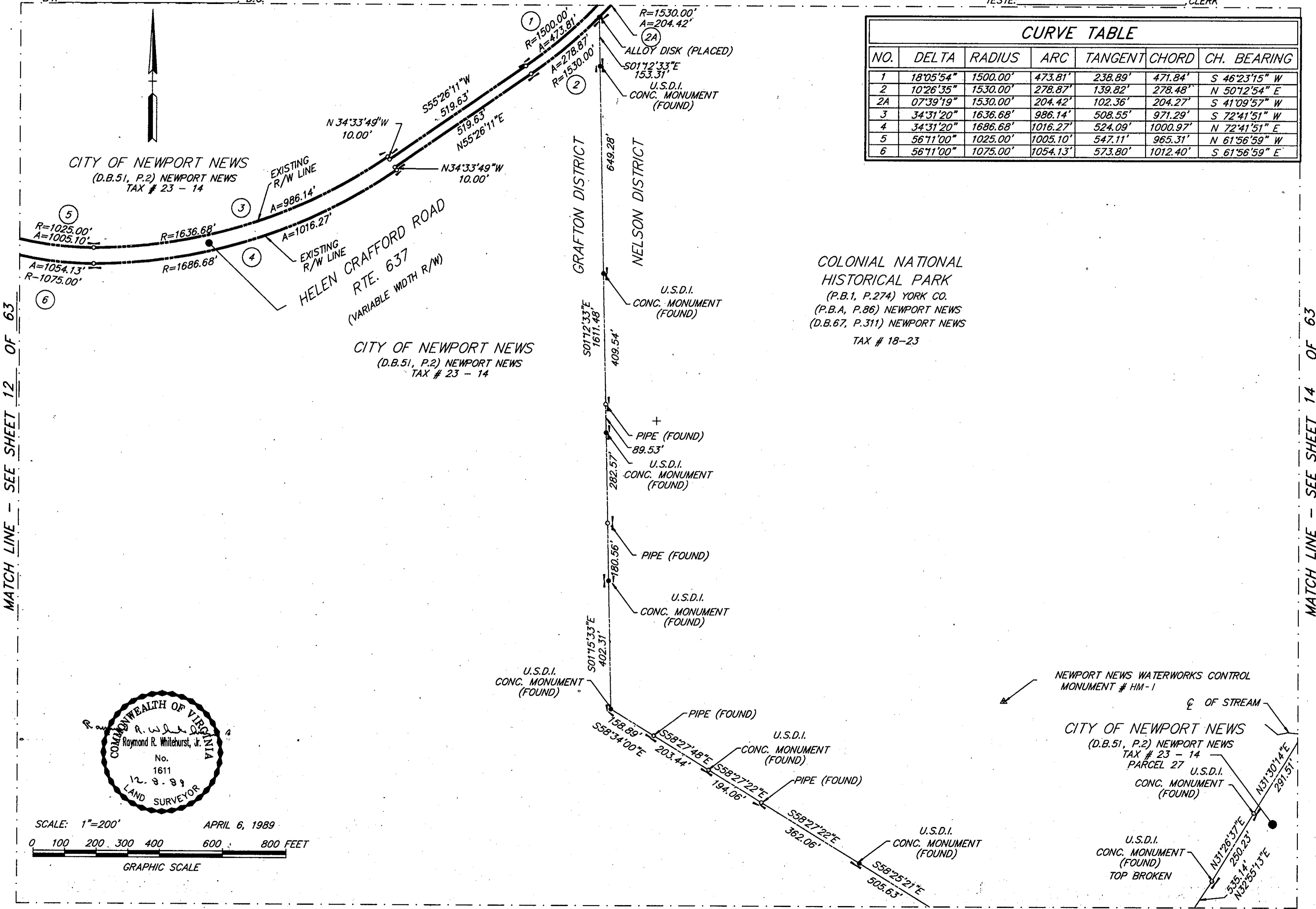
TESTE: _____ CLERK
BY: _____ D.C.

Teste: Nancy B. Kane, Clerk
D.C.

Plat Book No. 11 Page 440

MATCH LINE - SEE SHEET 9 OF 63

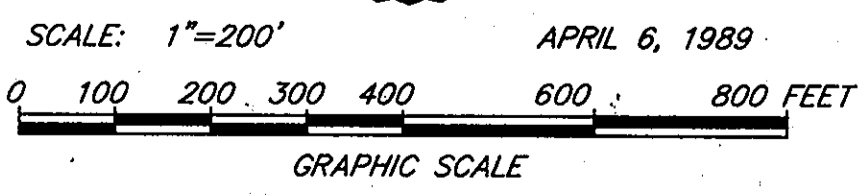
TESTE: _____ CLERK



CURVE TABLE						
NO.	DELTA	RADIUS	ARC	TANGENT	CHORD	CH. BEARING
1	18°05'54"	1500.00'	473.81'	238.89'	471.84'	S 46°23'15" W
2	10°26'35"	1530.00'	278.87'	139.82'	278.48'	N 50°12'54" E
2A	07°39'19"	1530.00'	204.42'	102.36'	204.27'	S 41°09'57" W
3	34°31'20"	1636.68'	986.14'	508.55'	971.29'	S 72°41'51" W
4	34°31'20"	1686.68'	1016.27'	524.09'	1000.97'	N 72°41'51" E
5	56°11'00"	1025.00'	1005.10'	547.11'	965.31'	N 61°56'59" W
6	56°11'00"	1075.00'	1054.13'	573.80'	1012.40'	S 61°56'59" E

MATCH LINE - SEE SHEET 12 OF 63

MATCH LINE - SEE SHEET 14 OF 63



MATCH LINE - SEE SHEET 18 OF 63