

STATE OF VIRGINIA COUNTY OF YORK
IN THE CLERK'S OFFICE OF THE CIRCUIT COURT FOR THE
COUNTY OF YORK, THE DAY OF 1989, THIS
PLAT WAS PRESENTED AND ADMITTED TO RECORD AS THE LAW DIRECTS
IN PLAT BOOK PAGE

Filed in the Clerk's Office, Circuit Court, York Co., SHEET 1 FOR NOTES
the 21 day of June 1989

VIRGINIA:
IN THE CLERK'S OFFICE OF THE CITY OF NEWPORT NEWS,
THE DAY OF 1989, THIS PLAT WAS PRESENTED
AND ADMITTED TO RECORD AS THE LAW DIRECTS IN PLAT BOOK
AT PAGE

Teste: Nancy B. Kane, Clerk
C. P. ... D.C.

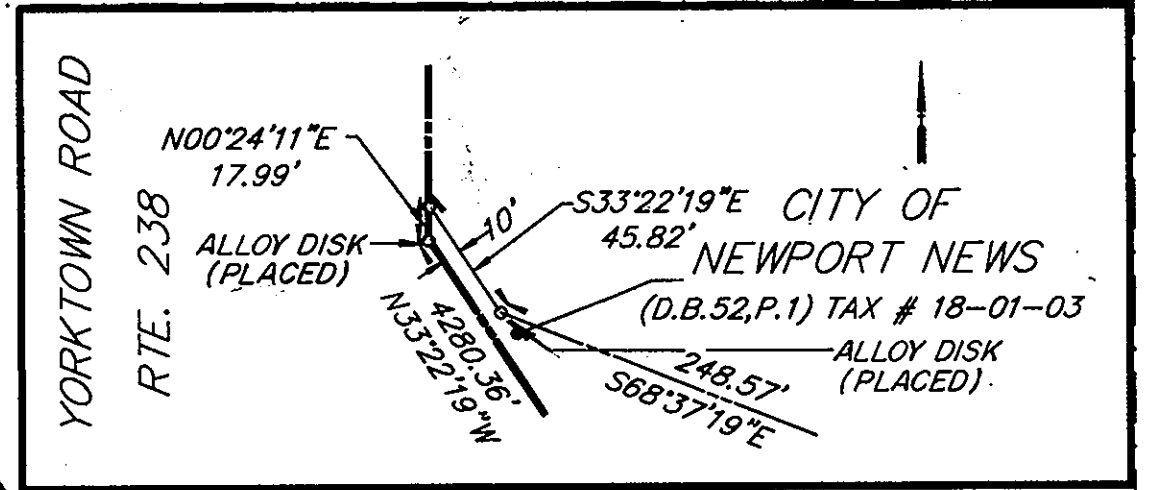
Plat Book No. 11 Page 448

MATCH LINE - SEE SHEET 16 OF 63

TESTE: _____, CLERK
BY: _____, D.C.

TESTE: _____, CLERK

(J) PIPE (FOUND)
 (K) N00°28'50"E 260.20'
 (L) PIPE (FOUND)
 (M) N00°28'50"E 139.04'
 (M) PIPE (FOUND)
 SEE INSERT
 WELDON M. MYERS, JR. & PATRICIA H. MYERS
 (D.B.1078,P.2457) (D.B.1026,P.1822=PLAT) TAX # 22-01-01
 TERRY L. SCOTT & JEAN L. SCOTT
 (D.B.1035,P.729) (D.B.1035,P.731=PLAT) TAX # 22-01-02
 EDITH P. CURTIS
 (W.B.38,P.263) TAX # 22-01-03
 STEVEN J. WESTLIN & DIANE R. WESTLIN
 (D.B.895,P.529) (D.B.895,P.530=PLAT) TAX # 22-01-04
 (D.B.48,P.80)

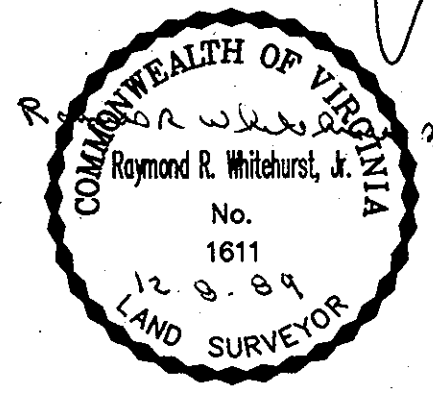
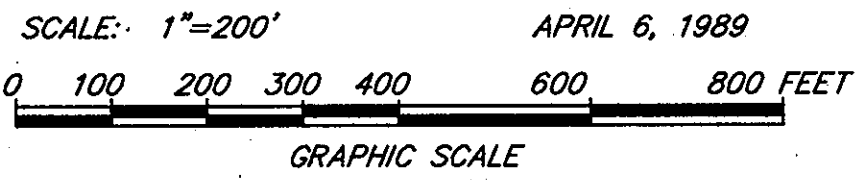


INSERT - NOT TO SCALE

CITY OF NEWPORT NEWS
 (D.B.51,P.2)
 TAX # 18-01-03

SCHOOL BOARD
 CITY OF NEWPORT NEWS
 (D.B.871,P.381=PLAT)
 (D.B.40,P.161)
 TAX # 22-02-02

CITY OF NEWPORT NEWS
 (D.B.51,P.2)
 TAX # 27-01-01



APPROXIMATE LOCATION OF
 100' VIRGINIA POWER EASEMENT
 (P.B. A. P. 132)

MATCH LINE - SEE SHEET 27 OF 63

MATCH LINE - SEE SHEET 15 OF 63

MATCH LINE - SEE SHEET 22 OF 63