

STATE OF VIRGINIA COUNTY OF YORK
IN THE CLERK'S OFFICE OF THE CIRCUIT COURT FOR THE
COUNTY OF YORK, THE DAY OF 1989, THIS
PLAT WAS PRESENTED AND ADMITTED TO RECORD AS THE LAW DIRECTS
IN PLAT BOOK PAGE

Filed in the Clerk's Office, Circuit Court, York Co., Va. SEE SHEET 1 FOR NOTES
the day of 1989

Plat Book No. 11 Page 454

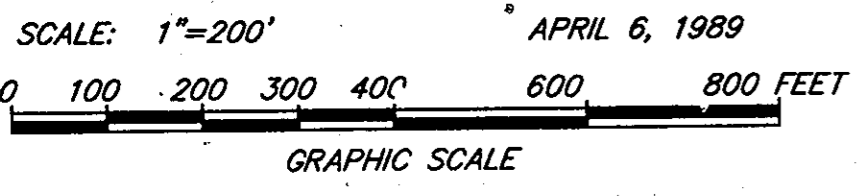
VIRGINIA:
IN THE CLERK'S OFFICE OF THE CITY OF NEWPORT NEWS,
THE DAY OF 1989, THIS PLAT WAS PRESENTED
AND ADMITTED TO RECORD AS THE LAW DIRECTS IN PLAT BOOK
AT PAGE

TESTE: Nancy B. Kane, Clerk D.C.

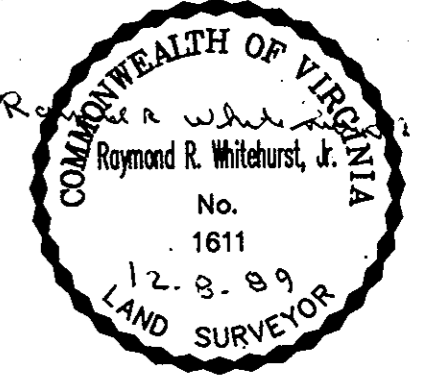
MATCH LINE - SEE SHEET 21 OF 63

TESTE: CLERK

TESTE: CLERK
BY: D.C.

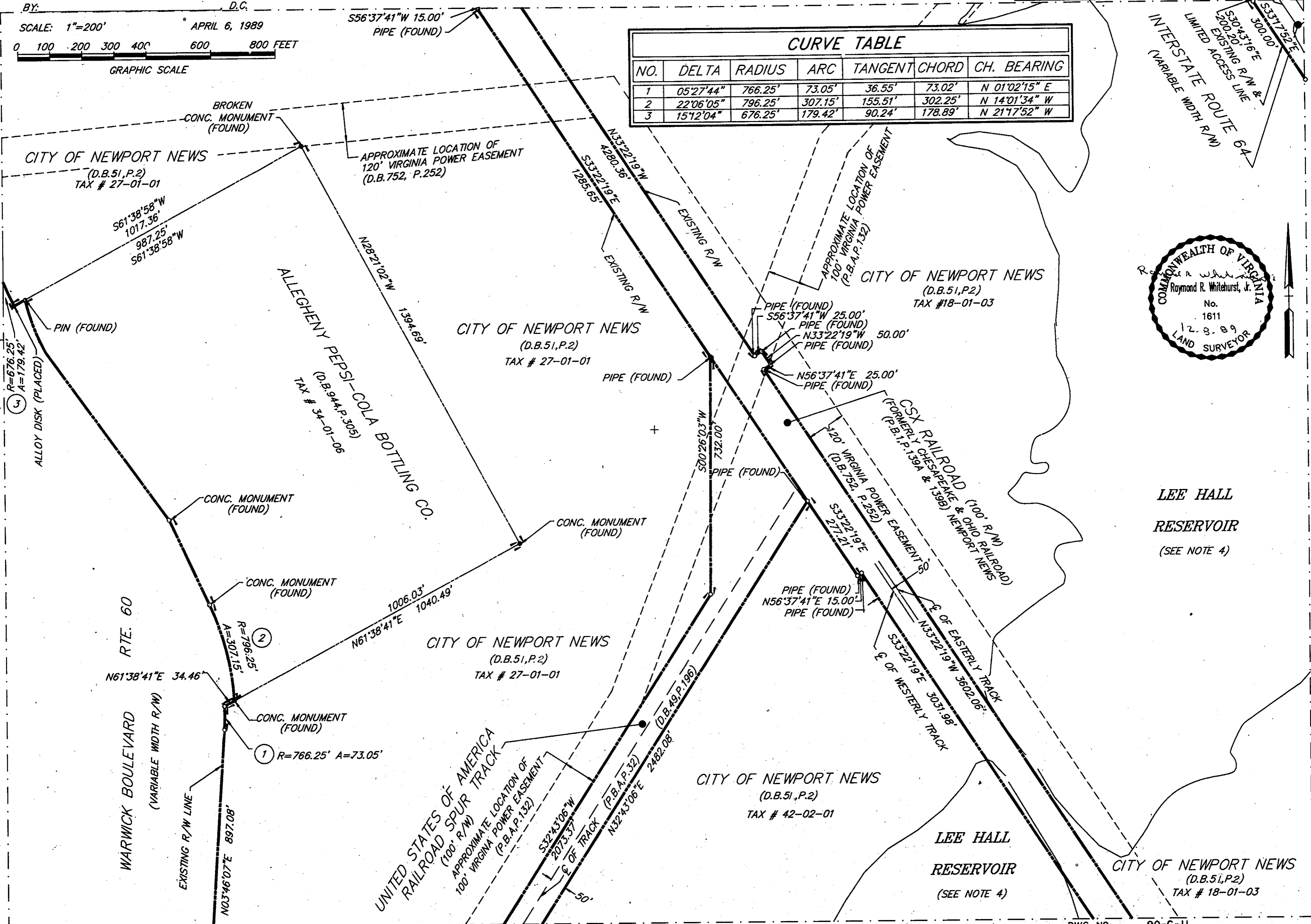


| CURVE TABLE | | | | | | |
|-------------|-----------|---------|---------|---------|---------|---------------|
| NO. | DELTA | RADIUS | ARC | TANGENT | CHORD | CH. BEARING |
| 1 | 05°27'44" | 766.25' | 73.05' | 36.55' | 73.02' | N 01°02'15" E |
| 2 | 22°06'05" | 796.25' | 307.15' | 155.51' | 302.25' | N 14°01'34" W |
| 3 | 15°12'04" | 676.25' | 179.42' | 90.24' | 178.89' | N 21°17'52" W |



MATCH LINE - SEE SHEET 15 OF 63

MATCH LINE - SEE SHEET 28 OF 63



MATCH LINE - SEE SHEET 34 OF 63