

STATE OF VIRGINIA COUNTY OF YORK
IN THE CLERK'S OFFICE OF THE CIRCUIT COURT FOR THE
COUNTY OF YORK, THE DAY OF 1989, THIS
PLAT WAS PRESENTED AND ADMITTED TO RECORD AS THE LAW DIRECTS
IN PLAT BOOK PAGE

Filed in the Clerk's Office, Circuit Court, York Co., Va.
the 21 day of 1992
Teste: Nancy B. Kane, Clerk

SEE SHEET 1 FOR NOTES

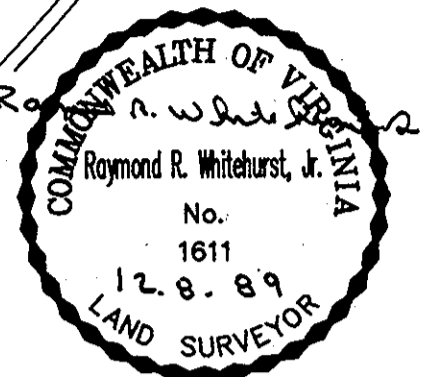
Plat Book No. 11 Page 458

VIRGINIA:
IN THE CLERK'S OFFICE OF THE CITY OF NEWPORT NEWS,
THE DAY OF 1989, THIS PLAT WAS PRESENTED
AND ADMITTED TO RECORD AS THE LAW DIRECTS IN PLAT BOOK
AT PAGE

TESTE: _____, CLERK
BY: _____, D.C.

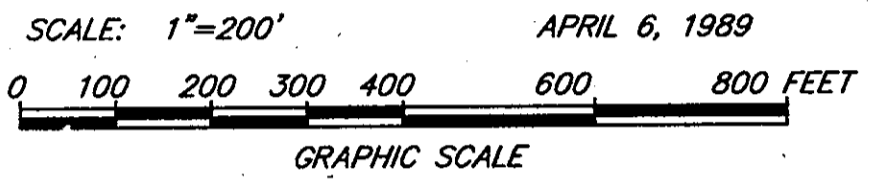
TESTE: _____, CLERK

MATCH LINE - SEE SHEET 25 OF 63



ABANDONED PORTION
OF ROUTE 636

CURVE TABLE						
NO.	DELTA	RADIUS	ARC	TANGENT	CHORD	CH. BEARING
31	11°19'55"	2801.79'	554.14'	277.98'	553.23'	S 60°44'04" W
1	08°35'42"	557.96'	83.70'	41.93'	83.62'	S 33°38'41" E
2	08°35'42"	587.96'	88.20'	44.18'	88.12'	N 33°38'41" W



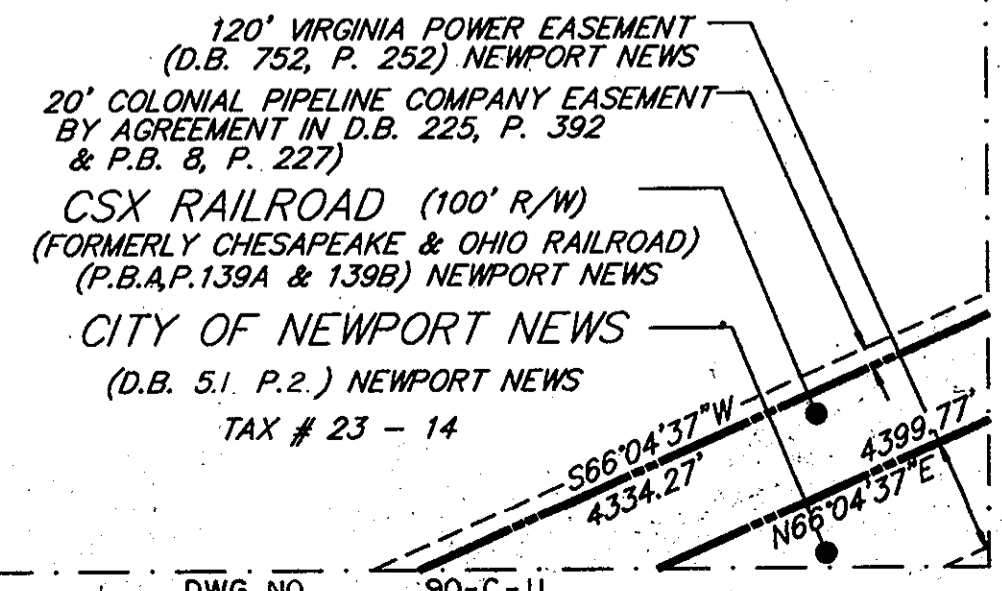
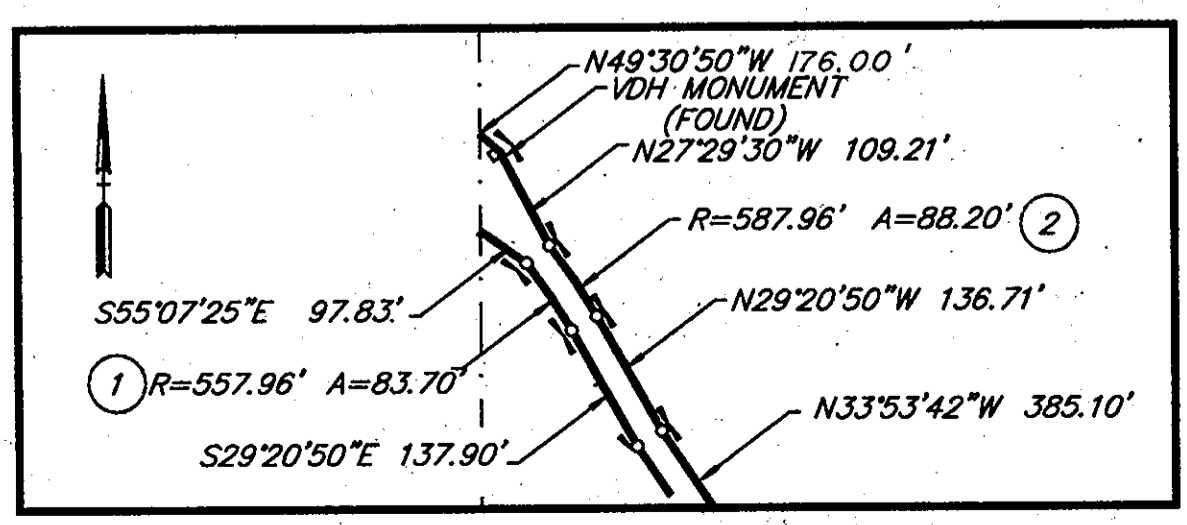
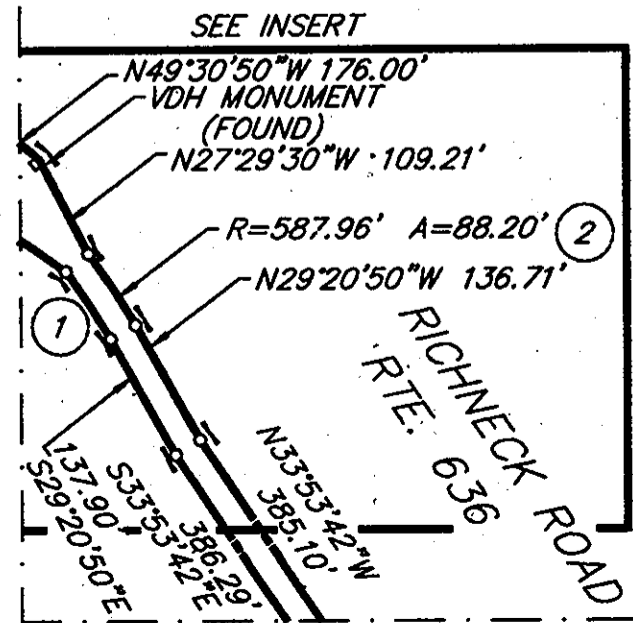
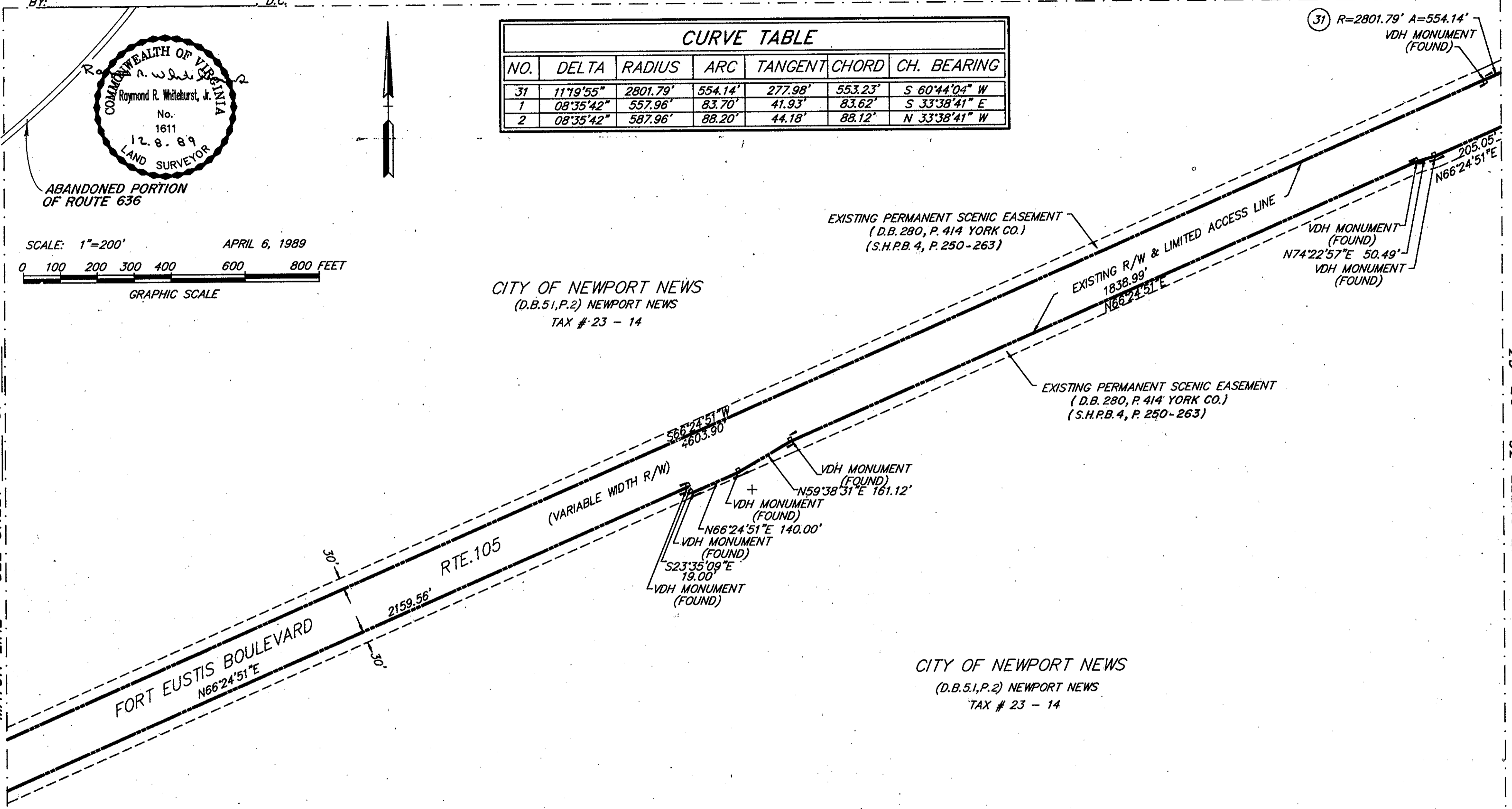
CITY OF NEWPORT NEWS
(D.B.51,P.2) NEWPORT NEWS
TAX # 23 - 14

EXISTING PERMANENT SCENIC EASEMENT
(D.B.280, P.414 YORK CO.)
(S.H.P.B.4, P.250-263)

EXISTING PERMANENT SCENIC EASEMENT
(D.B.280, P.414 YORK CO.)
(S.H.P.B.4, P.250-263)

MATCH LINE - SEE SHEET 30 OF 63

MATCH LINE - SEE SHEET 32 OF 63



MATCH LINE - SEE SHEET 38 OF 63