

STATE OF VIRGINIA COUNTY OF YORK  
IN THE CLERK'S OFFICE OF THE CIRCUIT COURT FOR THE  
COUNTY OF YORK, THE DAY OF 1989, THIS  
PLAT WAS PRESENTED AND ADMITTED TO RECORD AS THE LAW DIRECTS  
IN PLAT BOOK PAGE

Filed in the Clerk's Office, Circuit Court, York Co., Va. SEE SHEET 1 FOR NOTES  
the 2<sup>nd</sup> day of June 19 89

VIRGINIA: IN THE CLERK'S OFFICE OF THE CITY OF NEWPORT NEWS,  
THE DAY OF 1989, THIS PLAT WAS PRESENTED  
AND ADMITTED TO RECORD AS THE LAW DIRECTS IN PLAT BOOK  
AT PAGE

TESTE: \_\_\_\_\_ CLERK  
BY: \_\_\_\_\_ D.C.

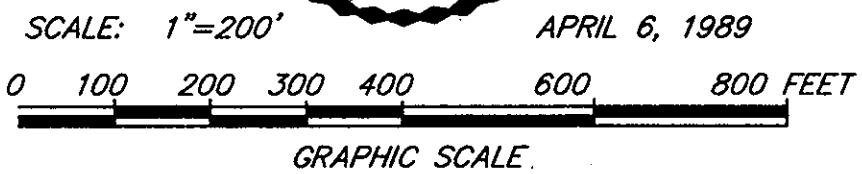
Teste: Nancy B. Kane, Clerk  
Carol Busselmeier D.C.

Plat Book No. 11 Page 472

MATCH LINE - SEE SHEET 39 OF 63

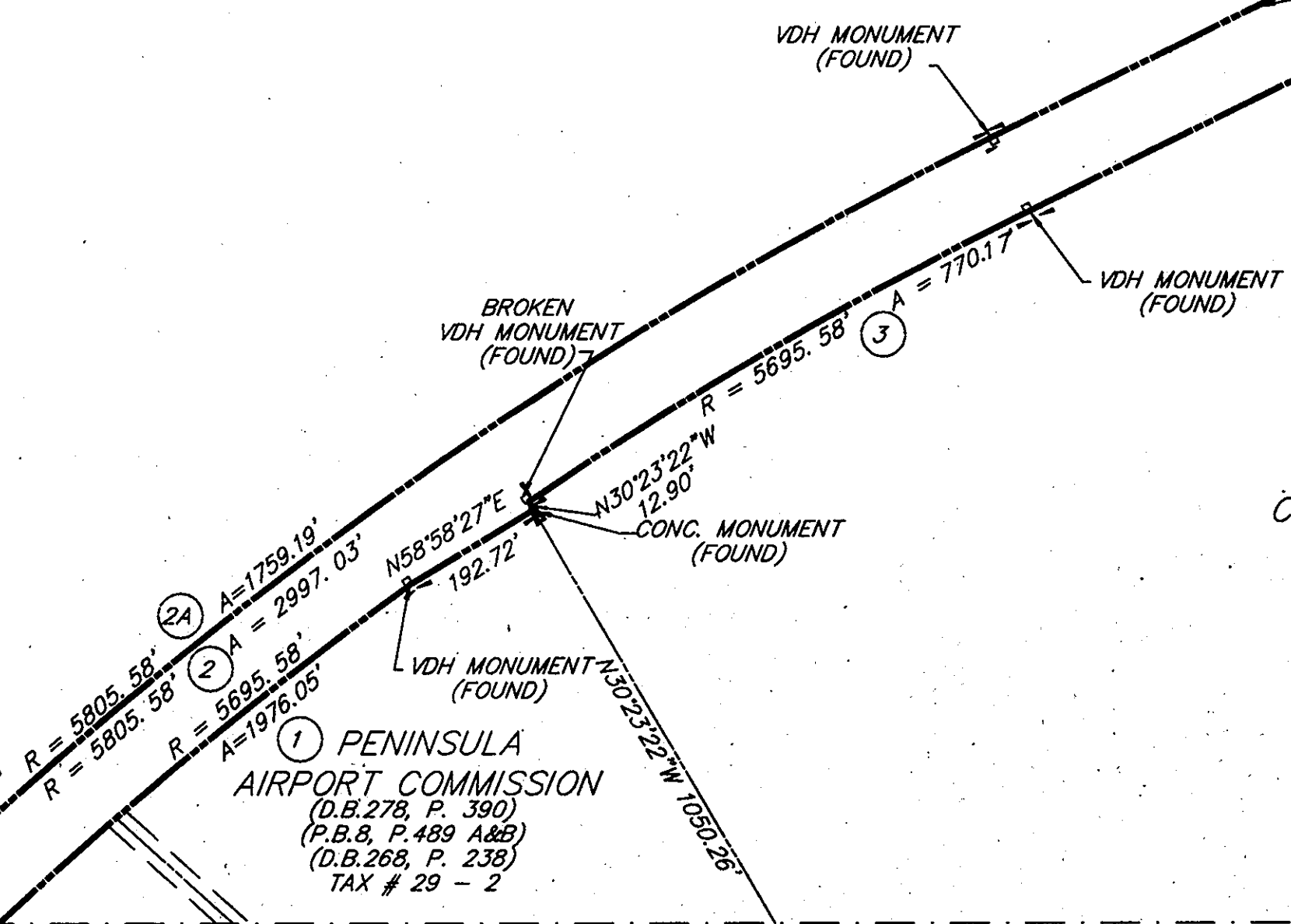
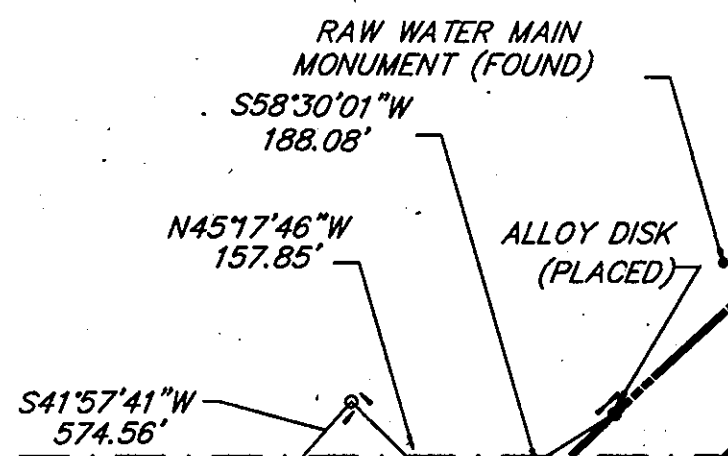
TESTE: \_\_\_\_\_ CLERK

CURVE TABLE						
NO.	DELTA	RADIUS	ARC	TANGENT	CHORD	CH. BEARING
1	19°52'42"	5695.58'	1976.05'	998.06'	1966.15'	N 44°14'14" E
2	29°34'41"	5805.58'	2997.03'	1532.70'	2963.86'	N 49°04'47" E
2A	17°21'42"	5805.58'	1759.19'	886.39'	1752.47'	S 55°11'16" W
3	07°44'52"	5695.58'	770.17'	385.67'	769.59'	N 59°59'41" E



CITY OF NEWPORT NEWS  
(D.B.51,P.2) NEWPORT NEWS  
TAX # 23 - 14  
PARCEL 38

EXISTING R/W RTE. 173 DENBIGH BLVD.  
(110' R/W)  
S63°52'07"W 2311.85'  
N63°52'07"E 3452.88'



CITY OF NEWPORT NEWS  
(D.B. 51, P.2) NEWPORT NEWS  
TAX # 23 - 14, 29 - 99

① PENINSULA AIRPORT COMMISSION  
(D.B.278, P. 390)  
(P.B.8, P.489 A&B)  
(D.B.268, P. 238)  
TAX # 29 - 2

DWG. NO. 90-C-11  
DWG. FILE NO. HA-1457  
PRINT FILE NO. N-8141

MATCH LINE - SEE SHEET 50 OF 63

(SHEET 45 OF 63)

MATCH LINE - SEE SHEET 44 OF 63

MATCH LINE - SEE SHEET 46 OF 63

MATCH LINE - SEE SHEET 51 OF 63