

STATE OF VIRGINIA COUNTY OF YORK
IN THE CLERK'S OFFICE OF THE CIRCUIT COURT FOR THE
COUNTY OF YORK, THE DAY OF 1989, THIS
PLAT WAS PRESENTED AND ADMITTED TO RECORD AS THE LAW DIRECTS
IN PLAT BOOK PAGE

Filed in the Clerk's Office, Circuit Court, York Co., Va. SEE SHEET 1 FOR NOTES
the day of June 1989

VIRGINIA:
IN THE CLERK'S OFFICE OF THE CITY OF NEWPORT NEWS,
THE DAY OF 1989, THIS PLAT WAS PRESENTED
AND ADMITTED TO RECORD AS THE LAW DIRECTS IN PLAT BOOK
AT PAGE

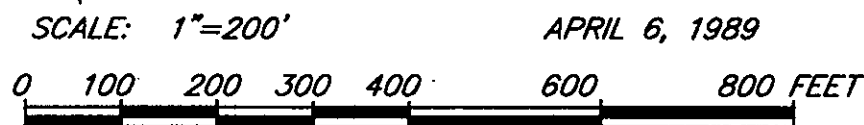
TESTE: _____, CLERK
BY: _____, D.C.

Teste: Nancy B. Kane, Clerk
D.C.

Plat Book No. 11 Page 480

MATCH LINE - SEE SHEET 52 OF 63

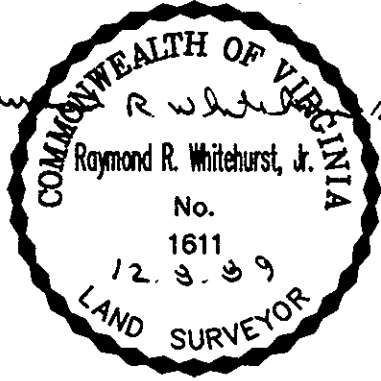
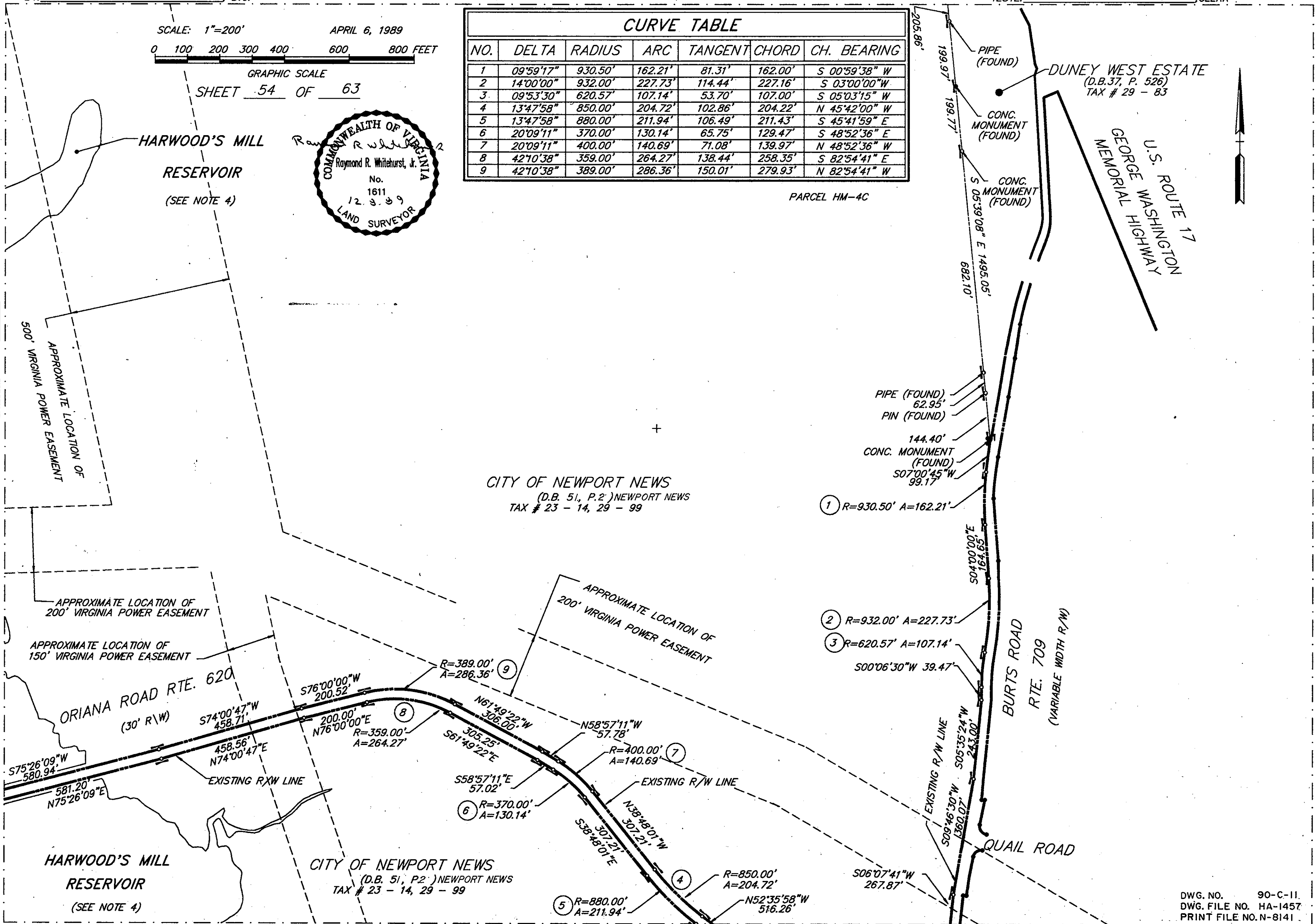
TESTE: _____, CLERK



GRAPHIC SCALE
SHEET 54 OF 63

CURVE TABLE						
NO.	DELTA	RADIUS	ARC	TANGENT	CHORD	CH. BEARING
1	09°59'17"	930.50'	162.21'	81.31'	162.00'	S 00°59'38" W
2	14°00'00"	932.00'	227.73'	114.44'	227.16'	S 03°00'00" W
3	09°53'30"	620.57'	107.14'	53.70'	107.00'	S 05°03'15" W
4	13°47'58"	850.00'	204.72'	102.86'	204.22'	N 45°42'00" W
5	13°47'58"	880.00'	211.94'	106.49'	211.43'	S 45°41'59" E
6	20°09'11"	370.00'	130.14'	65.75'	129.47'	S 48°52'36" E
7	20°09'11"	400.00'	140.69'	71.08'	139.97'	N 48°52'36" W
8	42°10'38"	359.00'	264.27'	138.44'	258.35'	S 82°54'41" E
9	42°10'38"	389.00'	286.36'	150.01'	279.93'	N 82°54'41" W

PARCEL HM-4C



CITY OF NEWPORT NEWS
(D.B. 51, P.2) NEWPORT NEWS
TAX # 23 - 14, 29 - 99

① R=930.50' A=162.21'

② R=932.00' A=227.73'

③ R=620.57' A=107.14'

⑨ R=389.00' A=286.36'

⑧ R=359.00' A=264.27'

⑥ R=370.00' A=130.14'

⑦ R=400.00' A=140.69'

⑤ R=880.00' A=211.94'

④ R=850.00' A=204.72'

DWG. NO. 90-C-11
DWG. FILE NO. HA-1457
PRINT FILE NO. N-8141

MATCH LINE - SEE SHEET 56 OF 63

(SHEET 54 OF 63)

MATCH LINE - SEE SHEET 57 OF 63