

STATE OF VIRGINIA COUNTY OF YORK  
IN THE CLERK'S OFFICE OF THE CIRCUIT COURT FOR THE  
COUNTY OF YORK, THE 2nd DAY OF June, 1989 THIS  
PLAT WAS PRESENTED AND ADMITTED TO RECORD AS THE LAW DIRECTS  
IN PLAT BOOK 11, PAGE 482.

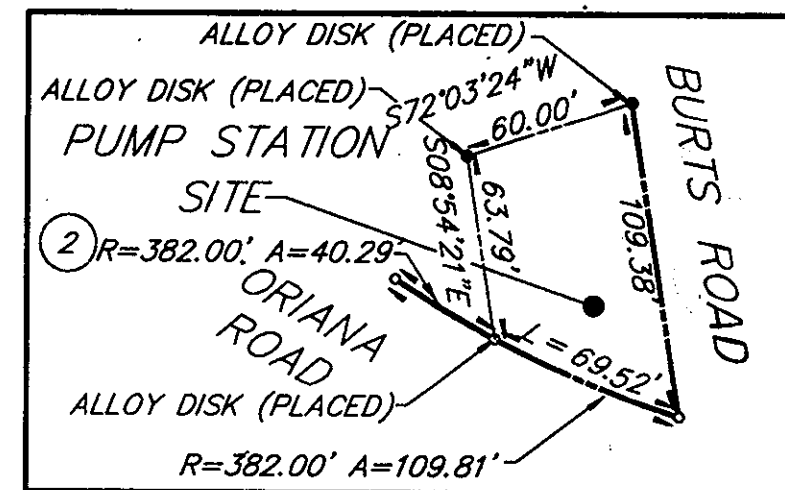
SEE SHEET 1 FOR NOTES

VIRGINIA:  
IN THE CLERK'S OFFICE OF THE CITY OF NEWPORT NEWS,  
THE      DAY OF     , 1989, THIS PLAT WAS PRESENTED  
AND ADMITTED TO RECORD AS THE LAW DIRECTS IN PLAT BOOK  
AT PAGE     .

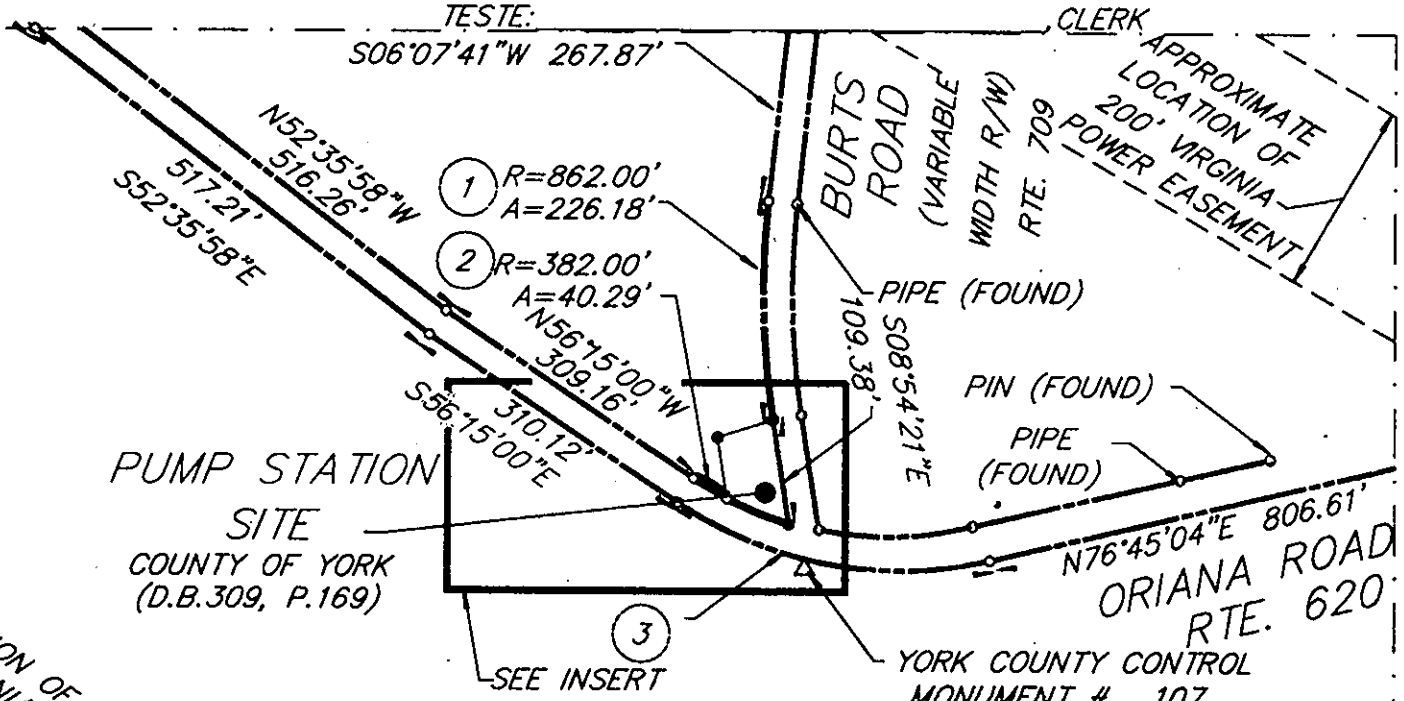
MATCH LINE - SEE  
SHEET 53 OF 63

TESTE: **NANCY B. KANE, CLERK**  
BY: Richard D. Dause, D.C.

MATCH LINE - SEE SHEET 54 OF 63



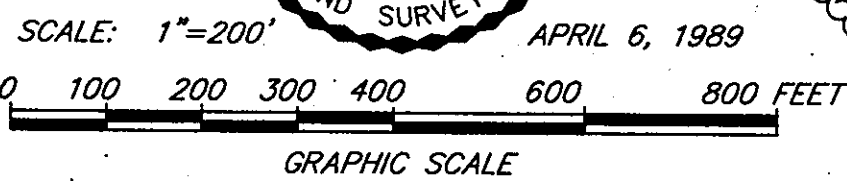
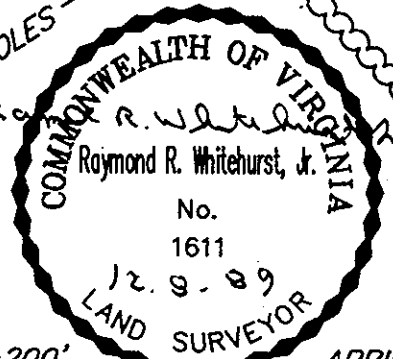
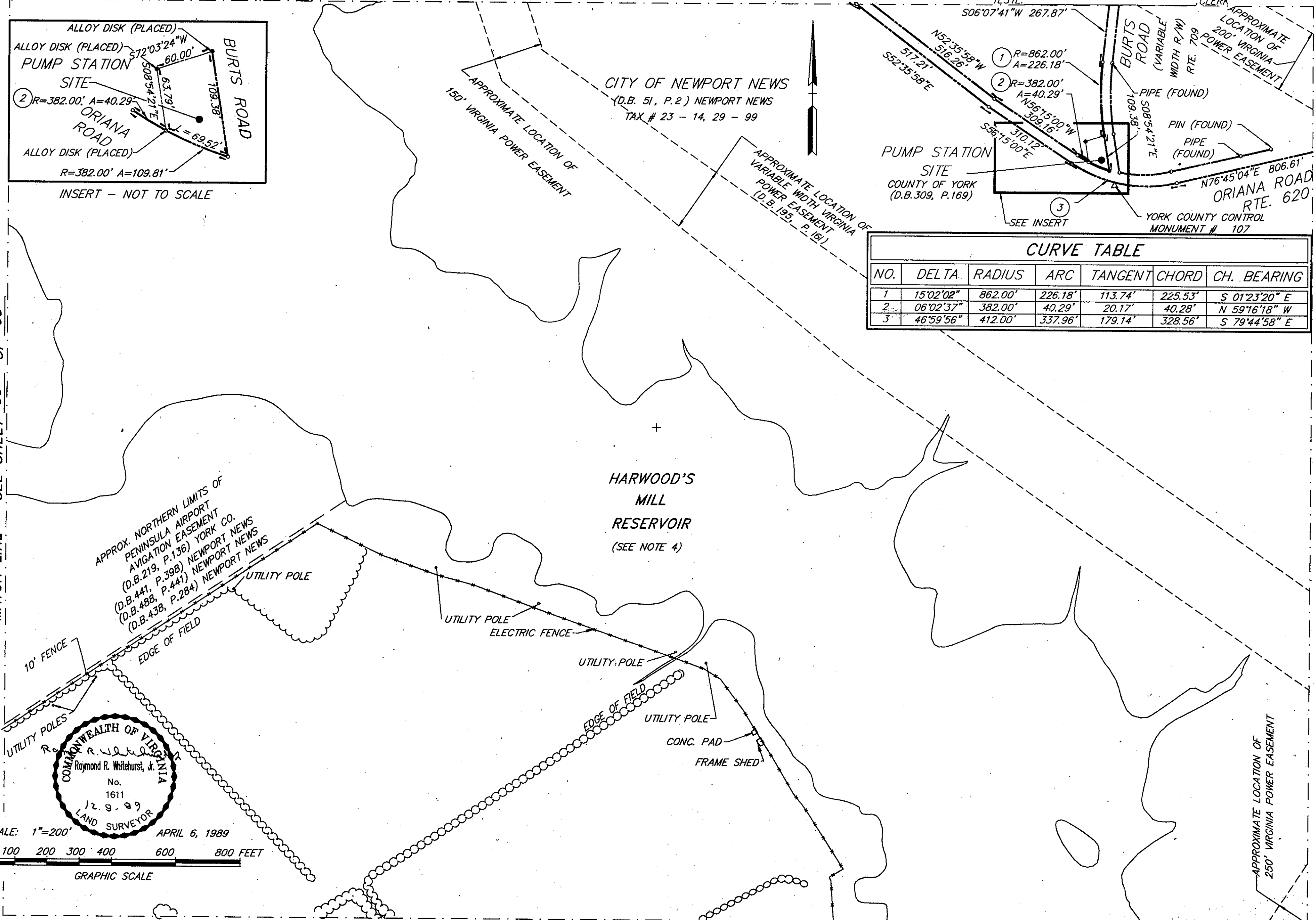
INSERT - NOT TO SCALE



CURVE TABLE						
NO.	DELTA	RADIUS	ARC	TANGENT	CHORD	CH. BEARING
1	15°02'02"	862.00'	226.18'	113.74'	225.53'	S 01°23'20" E
2	06°02'37"	382.00'	40.29'	20.17'	40.28'	N 59°16'18" W
3	46°59'56"	412.00'	337.96'	179.14'	328.56'	S 79°44'58" E

MATCH LINE - SEE SHEET 55 OF 63

MATCH LINE - SEE SHEET 57 OF 63



MATCH LINE - SEE SHEET 59 OF 63