

BUILDING 1  
Units listed below will be addressed as follows:  
(Insert Unit #) Persimmon Drive

Unit No.	Lower Boundary Elevation*	Upper Boundary Elevation**
111	34.1	Varies 42.14-43.05
112	34.1	Varies 42.14-43.05
113	34.1	Varies 42.14-43.05
114	34.1	Varies 42.14-43.05
115	34.1	Varies 42.14-43.05
116	34.1	Varies 42.14-43.05
117	34.1	Varies 42.14-43.05
118	34.1	Varies 42.14-43.05
121	44.48	Varies 52.54-54.54
122	44.48	Varies 52.54-54.54
123	44.48	Varies 52.54-54.54
124	44.48	Varies 52.54-54.54
125	44.48	Varies 52.54-54.54
126	44.48	Varies 52.54-54.54
127	44.48	Varies 52.54-54.54
128	44.48	Varies 52.54-54.54

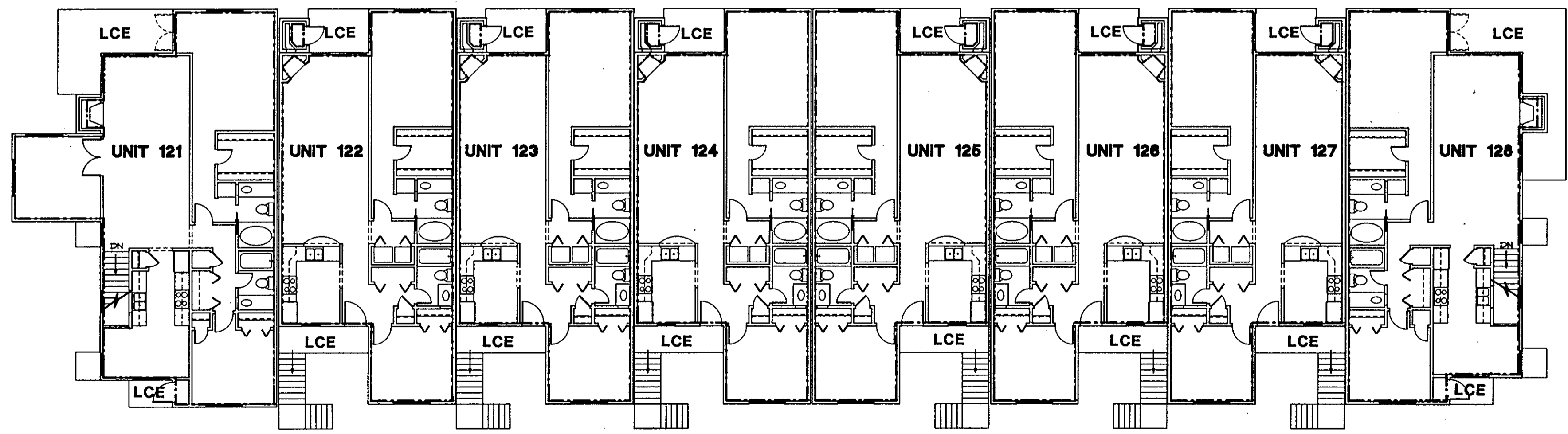
\* Note: The numerical value given as the lower boundary of each unit is the elevation of the horizontal plane of the upper surface of the gypsum-concrete floor topping of the unit.

\*\* Note: The numerical value given as the upper boundary of each unit is the elevation of the horizontal plane(s) of the upper (covered) surface of the gypsum board (or other material) constituting the exposed ceiling of the unit.

1ST FLOOR PLAN - BUILDING 1 UNITS 111-118

NOTE:  
SEE UNIT FLOOR PLANS FOR MORE DETAILED BOUNDARY AND COMMON ELEMENT INFORMATION

LEGEND:  
S.B. - SIDE (PERIMETER) BOUNDARY - - - - -  
LCE - LIMITED COMMON ELEMENT  
CE - COMMON ELEMENT



2ND FLOOR PLAN - BUILDING 1 UNITS 121-128

ARCHITECT'S CERTIFICATE

I hereby certify that this is a correct and accurate plan, that this plan is in compliance with Virginia Code Ann. Subsections 55-79.58 (b) and (e), and that the units depicted hereon have been substantially completed.

*Robert A. Magoon Jr.*  
Robert A. Magoon Jr., AIA  
Date: 6/24/92

Plat Book No. 11 Page 496

Filed in the Clerk's Office, Circuit Court, York Co., Va. the 25<sup>th</sup> day of June 1992

Teste: Nancy B. Kane, Clerk  
*Karen D. Kishattani* D.C. 12:50 PM

NO.	DATE	REVISIONS	BY

WILLIAMS, TAZEWELL AND ASSOCIATES  
Architecture Engineering Interiors  
710 West 21st Street, Norfolk, Virginia 23517

Plat of Condominium  
EAGLE SOUND AT KILN CREEK  
YORK COUNTY, VIRGINIA

EXHIBIT A-3  
PHASE ONE