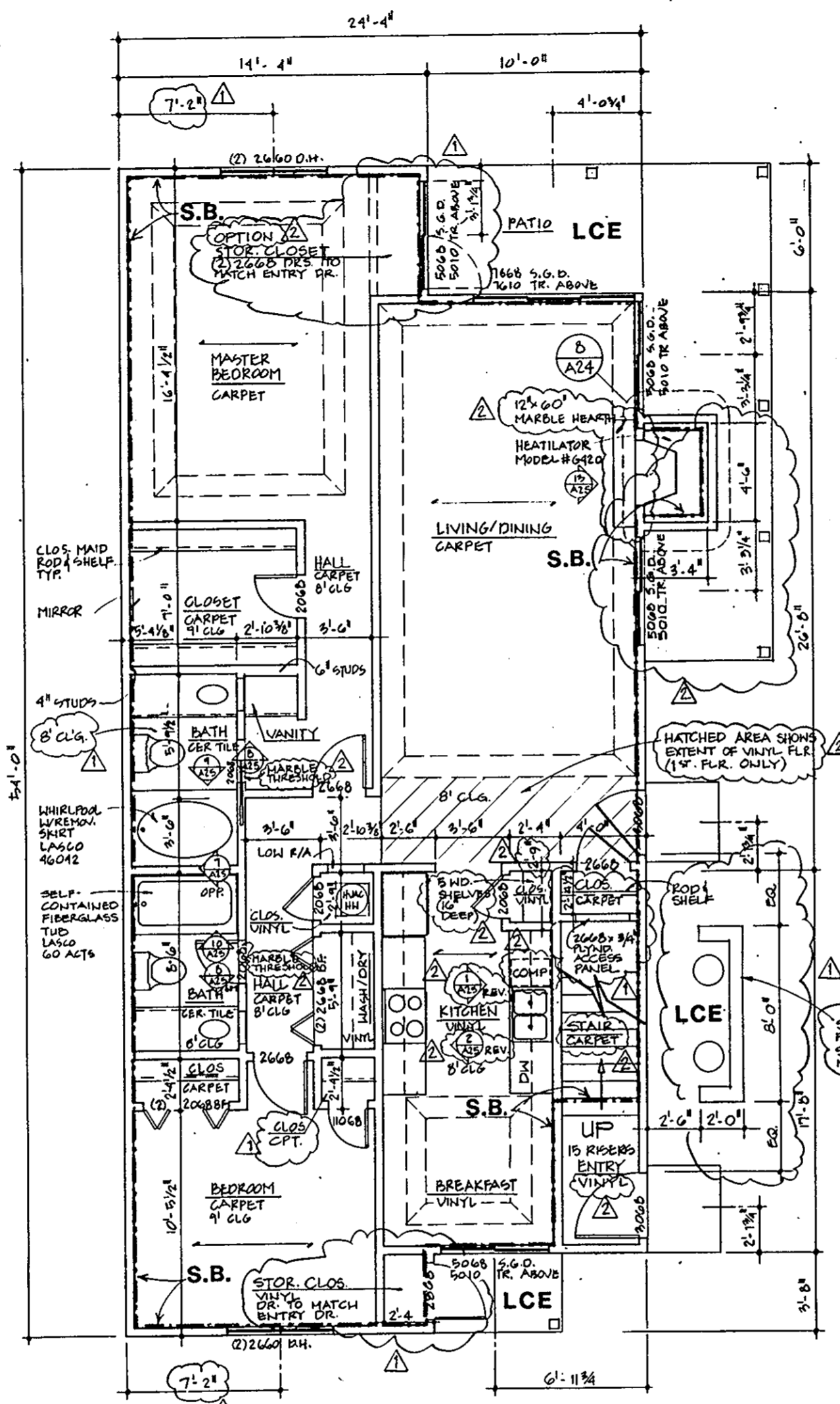
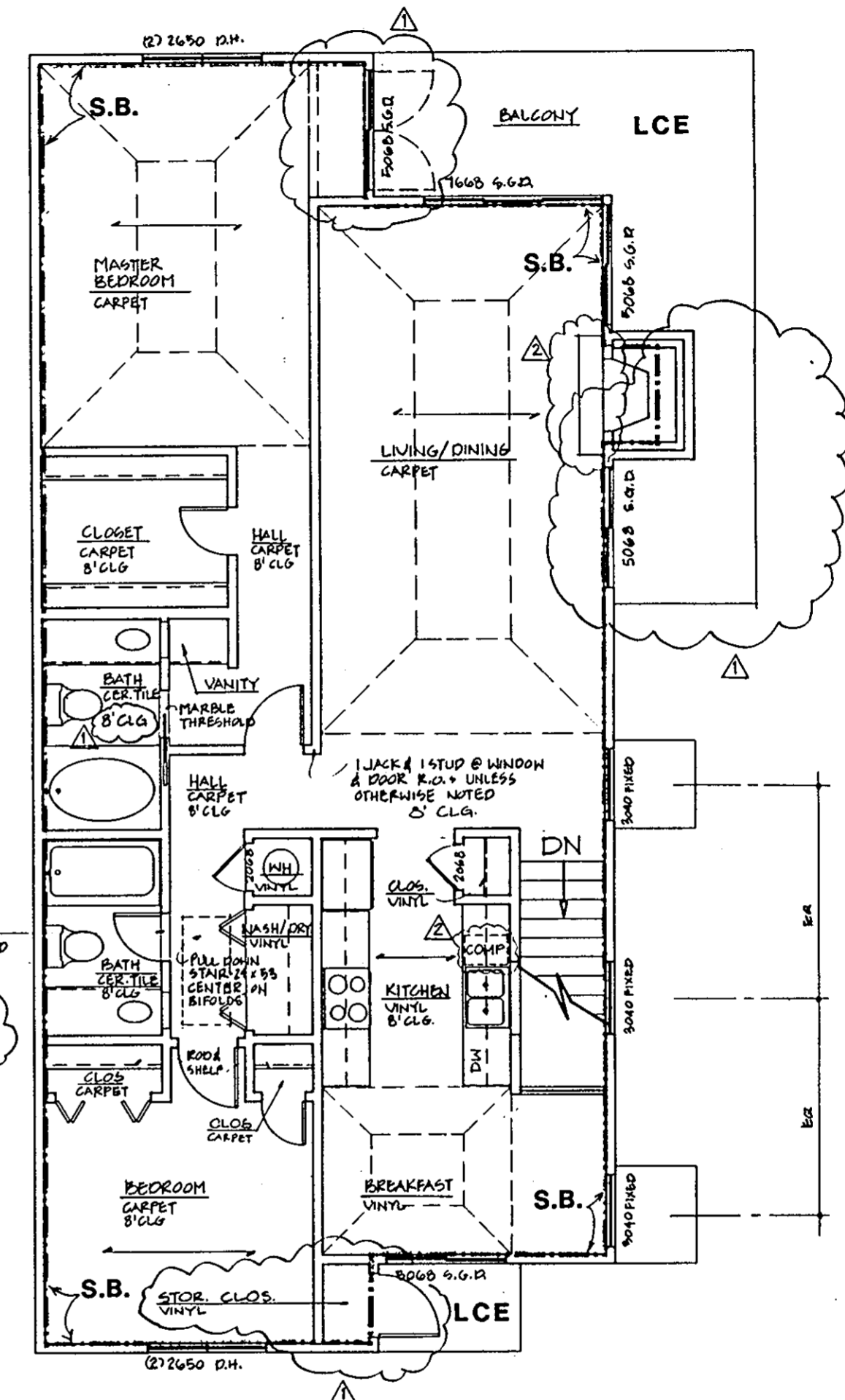


Plat of Condominium  
 EAGLE SOUND AT KILN CREEK  
 YORK COUNTY, VIRGINIA

EXHIBIT  
 A-3  
 PHASE  
 ONE



FIRST FLR. PLAN - UNIT 'D'  
 1/4" = 1'-0"



SECOND FLR. PLAN - UNIT 'D'  
 1/4" = 1'-0"

ARCHITECT'S CERTIFICATE

I hereby certify that this is a correct and accurate plan, that this plan is in compliance with Virginia Code Ann. Subsections 55-79.58 (b) and (e), and that the units depicted hereon have been substantially completed.

*Robert A. Magoon Jr.*  
 Robert A. Magoon Jr., AIA  
 Date

Plat Book No. 11 Page 499

Filed in the Clerk's Office, Circuit Court, York Co., Va.  
 the 25<sup>th</sup> day of June, 1992  
 Teste: *Nancy B. Kane*, Clerk  
*Karen Skelton* D.C.

NO.	DATE	REVISIONS	BY
1	10/20/91	ADDENDA REVISION	RAM

LEGEND:  
 S.B. - SIDE (PERIMETER) BOUNDARY  
 LCE - LIMITED COMMON ELEMENT  
 CE - COMMON ELEMENT