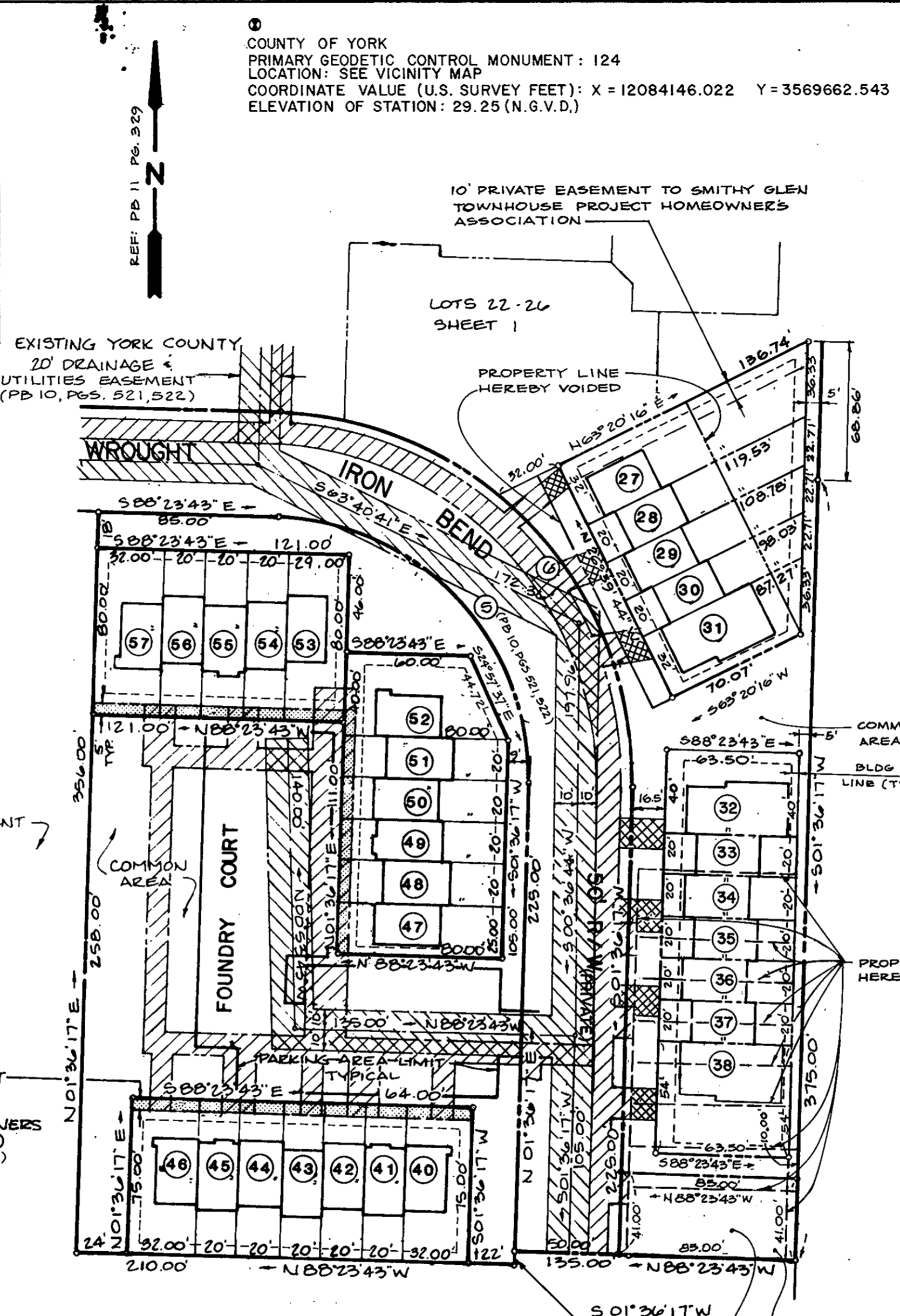


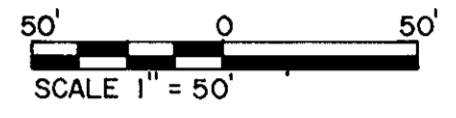
CURVE DATA						
NO.	DELTA	RADIUS	ARC	TAN	CHORD	CHD. BEARING
1	115°32'23"	75.00'	151.24'	118.96'	126.89'	S 01°36'17"W
2	115°32'23"	75.00'	151.24'	118.96'	126.89'	N 01°36'17"E
3	90°00'00"	25.00'	39.27'	25.00'	35.36'	S 43°23'43"E
4	90°00'00"	25.00'	39.27'	25.00'	35.36'	N 46°36'17"E
5	90°00'00"	125.00'	196.35'	125.00'	176.78'	N 43°23'43"W
6	90°00'00"	175.00'	274.89'	175.00'	247.49'	S 43°23'43"E
A	10°12'12"	175.00'	31.17'	15.62'	31.12'	S 83°17'37"E
B	15°10'29"	175.00'	46.35'	23.31'	46.21'	S 70°36'16"E
C	07°30'06"	175.00'	22.91'	11.47'	22.90'	S 59°15'59"E
D	04°33'31"	175.00'	13.92'	6.97'	13.92'	S 53°14'10"E
E	52°33'42"	175.00'	160.54'	86.42'	154.97'	S 24°40'34"E

LOT	AREA (S.F.)	LOT	AREA (S.F.)
1	4680	30	1853
2	2080	31	2517
3	2080	32	2540
4	2080	33	1270
5	2080	34	1270
6	2080	35	1270
7	4680	36	1270
8	2560	37	1270
9	1600	38	3429
10	1600		
11	1600	40	2400
12	1600	41	1500
13	1600	42	1500
14	2560	43	1500
15	2560	44	1500
16	1600	45	1500
17	1600	46	2400
18	1600	47	2000
19	1600	48	1600
20	1600	49	1600
21	2411.5	50	1600
22	3537	51	1600
23	2061	52	2800
24	2194	53	2320
25	1983	54	1600
26	3993	55	1600
27	4100	56	1600
28	2283	57	2560
29	2068		



RESUBDIVISION OF
 LOTS 27-31, 32-39
 & COMMON AREA
 SMITHY GLEN
 SECTION ONE
 COUNTY OF YORK, VIRGINIA

THE DeYOUNG - JOHNSON GROUP, INC.
 P.O. BOX 3505
 WILLIAMSBURG, VA. 23187
 SCALE: 1" = 50' MAY 18, 1992
 SHEET 2 OF 2

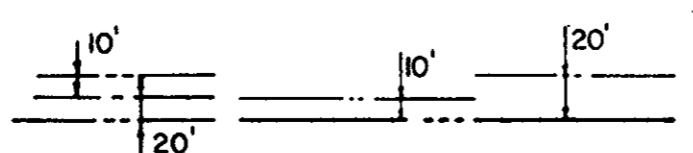


PROPERTY OF
 U.S. GOVERNMENT

- NOTES
1. PROPERTY IDENTIFIED AS ASSESSOR'S PARCEL NO. 37-33
 2. PROPERTY LOCATED IN ZONE X (AREA OUTSIDE 500 YEAR FLOOD PLAIN) AS SHOWN ON FIRM PANEL NO. 5101820043 B
 3. PROPERTY IS NOT LOCATED IN ANY RESOURCE PROTECTION AREA OR RESOURCE MANAGEMENT AREA.
 4. MINIMUM BUILDING SPACING & SETBACKS SHALL BE IN ACCORDANCE WITH RESOLUTION R91-208 ADOPTED AUGUST 15, 1991.
 5. THIS PLAT CORRECTS BUILDING SPACING & SETBACKS FOR SMITHY GLEN SECTION ONE (PB 10 PGS 521, 522) & RESUBDIVISION OF LOTS 1-7, 22-26 SMITHY GLEN SECTION ONE (PB 11 PGS 329, 330) IN ACCORDANCE WITH RESOLUTION R91-208 ADOPTED AUGUST 15, 1991, BY THE YORK COUNTY BOARD OF SUPERVISORS.

EASEMENT LEGEND

- EXISTING YORK COUNTY DRAINAGE AND UTILITIES EASEMENT. (PB 10 PGS 521, 522)
- EXISTING CITY OF NEWPORT NEWS WATER MAIN EASEMENT. (PB 10 PGS 521, 522)
- EXISTING PRIVATE EASEMENT TO SMITHY GLEN TOWNHOUSE PROJECT HOMEOWNERS ASSOCIATION. (PB 10 PGS 521, 522)
- EXISTING PRIVATE EASEMENT TO SMITHY GLEN TOWNHOUSE PROJECT HOMEOWNERS ASSOCIATION. (PB 11 PGS 329, 330)
- PROPOSED EASEMENT TO CITY OF NEWPORT NEWS WATERWORKS HEREBY DEDICATED WITH THIS PLAT.



APPROVED
 YORK COUNTY BOARD OF SUPERVISORS

BY: J. Mail Cart
 PLAT APPROVING AGENT
 DATE: July 14, 1992

STATE OF VIRGINIA
 COUNTY OF YORK

IN THE CLERK'S OFFICE OF THE CIRCUIT COURT FOR THE COUNTY OF YORK THE 14th DAY OF July, 1992 THIS MAP WAS PRESENTED & ADMITTED TO RECORD AS THE LAW DIRECTS IN PLAT BOOK 11, PAGE 507

TESTE: Nancy B. Kane, Clerk
 CLERK

BY: R. J. ...