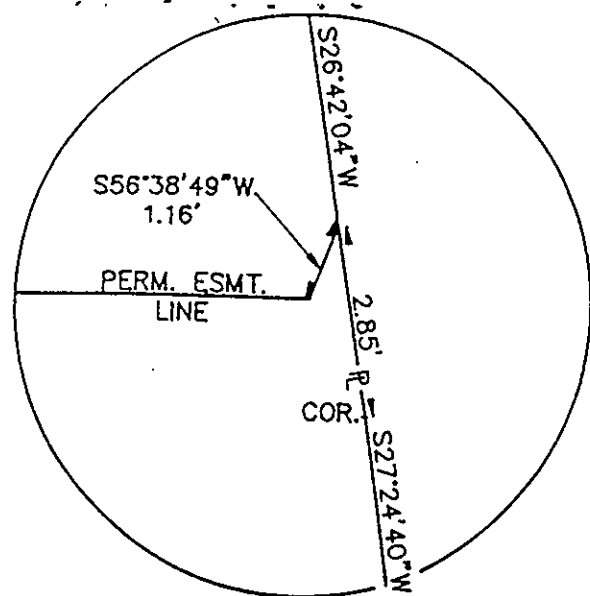
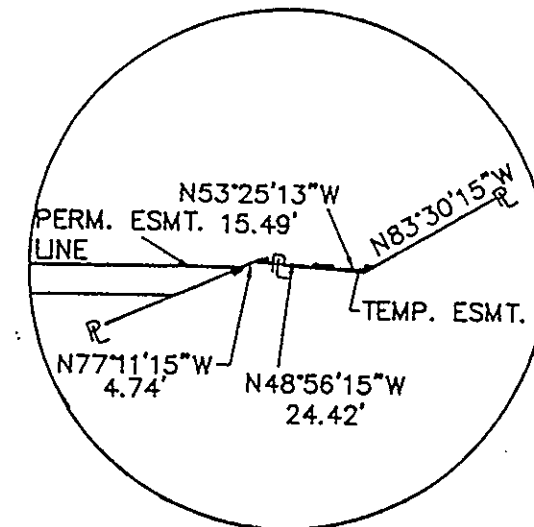


306

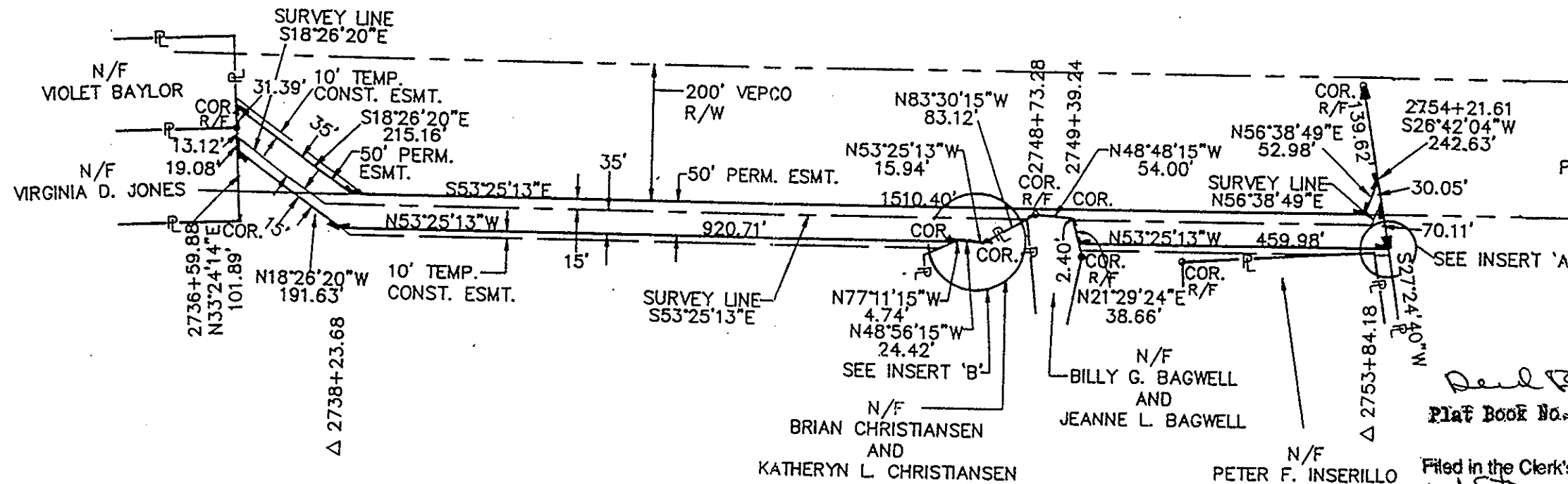
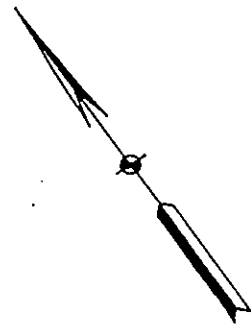
BENEL CORPORATION



INSERT 'A'
N.T.S.



INSERT 'B'
N.T.S.



AREA INSIDE VEPCO R/W:
 PERM: 0.20 AC.
 TEMP: 0.05 AC.

AREA OUTSIDE VEPCO R/W:
 PERM: 1.74 AC.
 TEMP: 0.31 AC.

MERIDIAN SOURCE: VIRGINIA COORDINATE SYSTEM OF 1927 (SOUTH ZONE)

Deed Book 671 page 464
 Plat Book No. 11 Page 508

Filed in the Clerk's Office, Circuit Court, York Co., Va.
 the 1st day of July 1992
 Teste: Nancy B. Kane, Clerk
 D.C.

Virginia Natural Gas
 VNG LATERAL

PLAT TO ACCOMPANY RIGHT-OF-WAY
 AGREEMENT WITH

BENEL CORPORATION

DISTRICT/TOWNSHIP BRUTON	COUNTY YORK	STATE VA
SURVEYED BY SCHNEIDER ENGINEERS		
SCALE	DATE	NO

4	3	2	1	2/28/91
			REVISED	
			ESMT. & P.	