

THE UNDERSIGNED CERTIFIES THAT THIS PLAN IS ACCURATE AND COMPLIES WITH THE PROVISIONS OF THE CODE OF VIRGINIA SECTION 55-79.58 (b) AND ALL UNITS DEPICTED HEREON HAVE BEEN SUBSTANTIALLY COMPLETED.

SIGNED: *Kenton B. Patrick* DATE: *6/24/92*
 KENTON B. PATRICK, P.E.



NOTES:

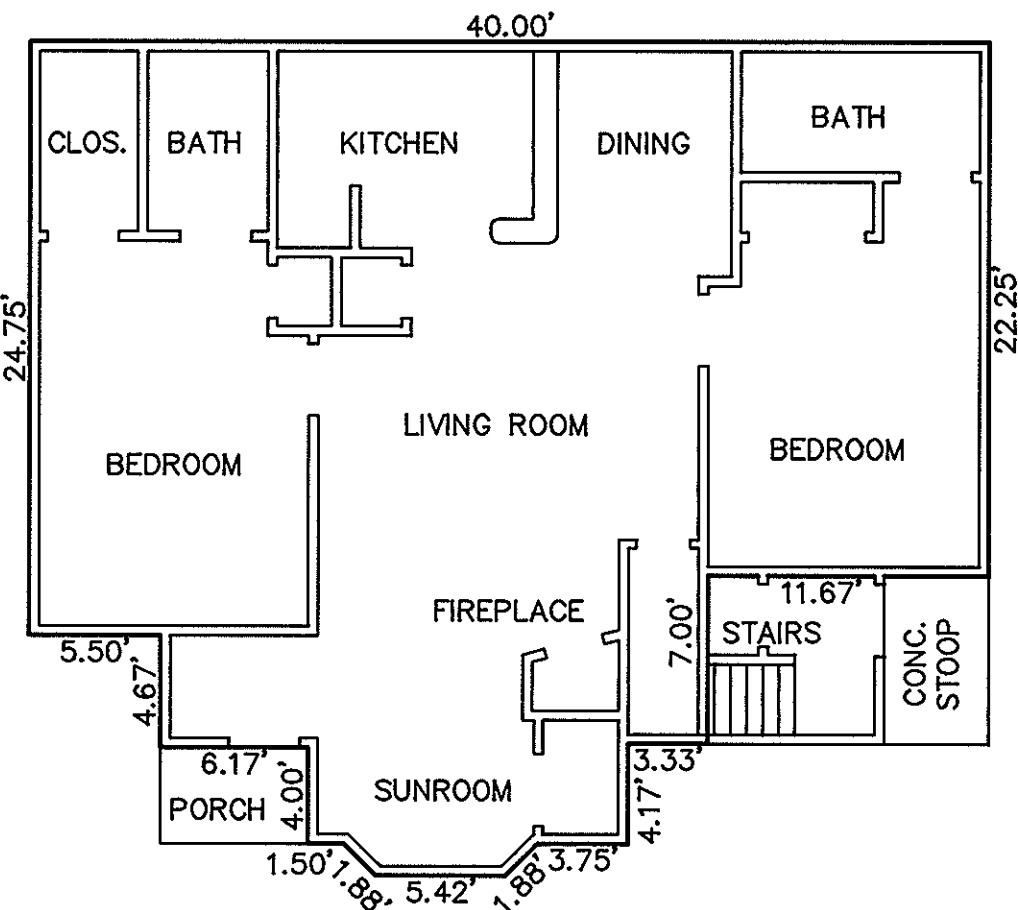
1. ALL BUILDING DIMENSIONS SHOWN HEREON ARE EXTERIOR DIMENSIONS AND ARE IN FEET.

STATE OF VIRGINIA

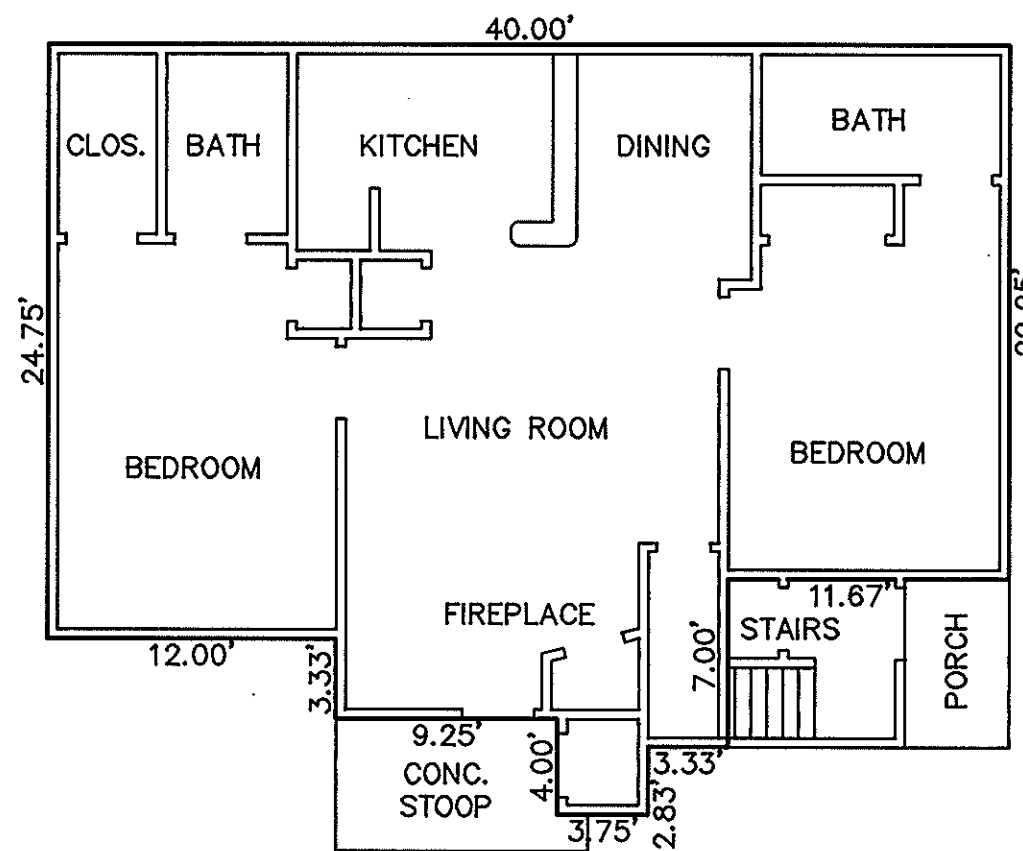
COUNTY OF YORK

IN THE CLERK'S OFFICE OF THE CIRCUIT COURT FOR THE COUNTY OF YORK, THE *17th* DAY OF *July*, 1992, THIS PLAT WAS PRESENTED AND ADMITTED TO RECORD AS THE LAW DIRECTS IN PLAT BOOK *11*, PAGE *50*.

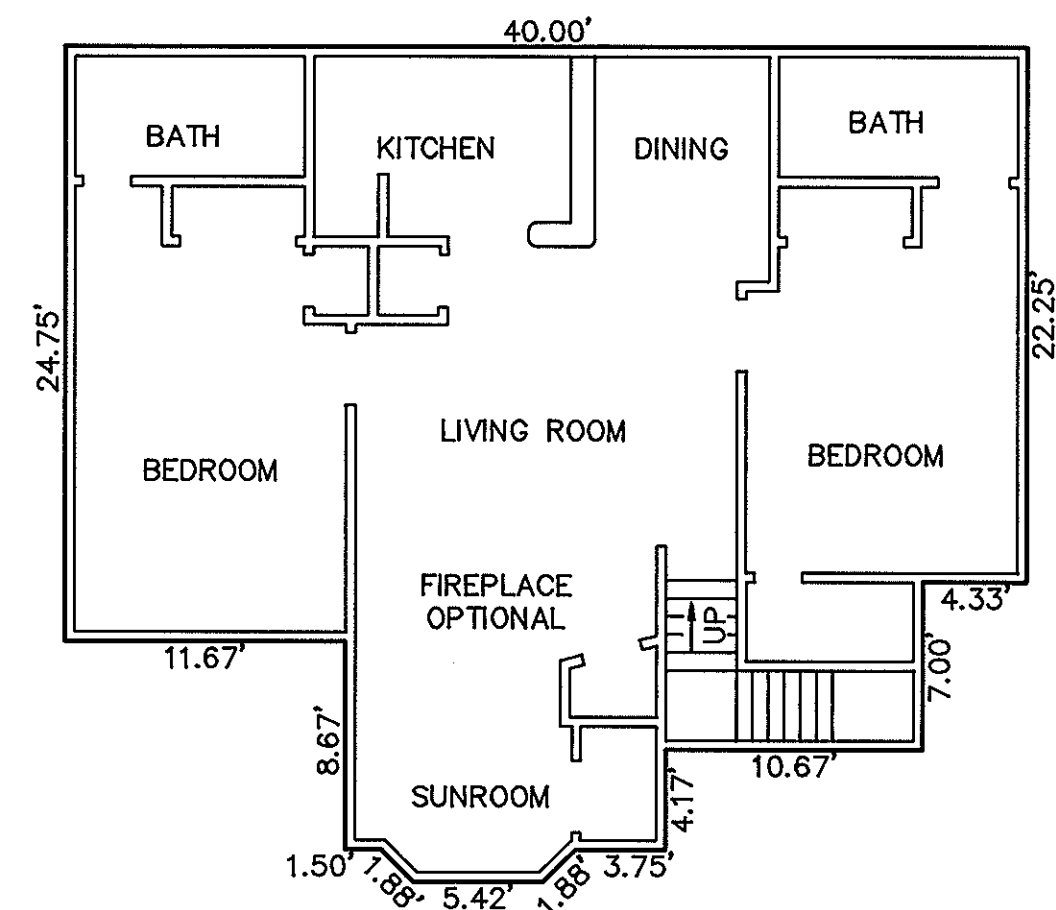
TESTE: **NANCY B. KANE, CLERK**
 CLERK
 BY: *Rachael R. Drouse &*



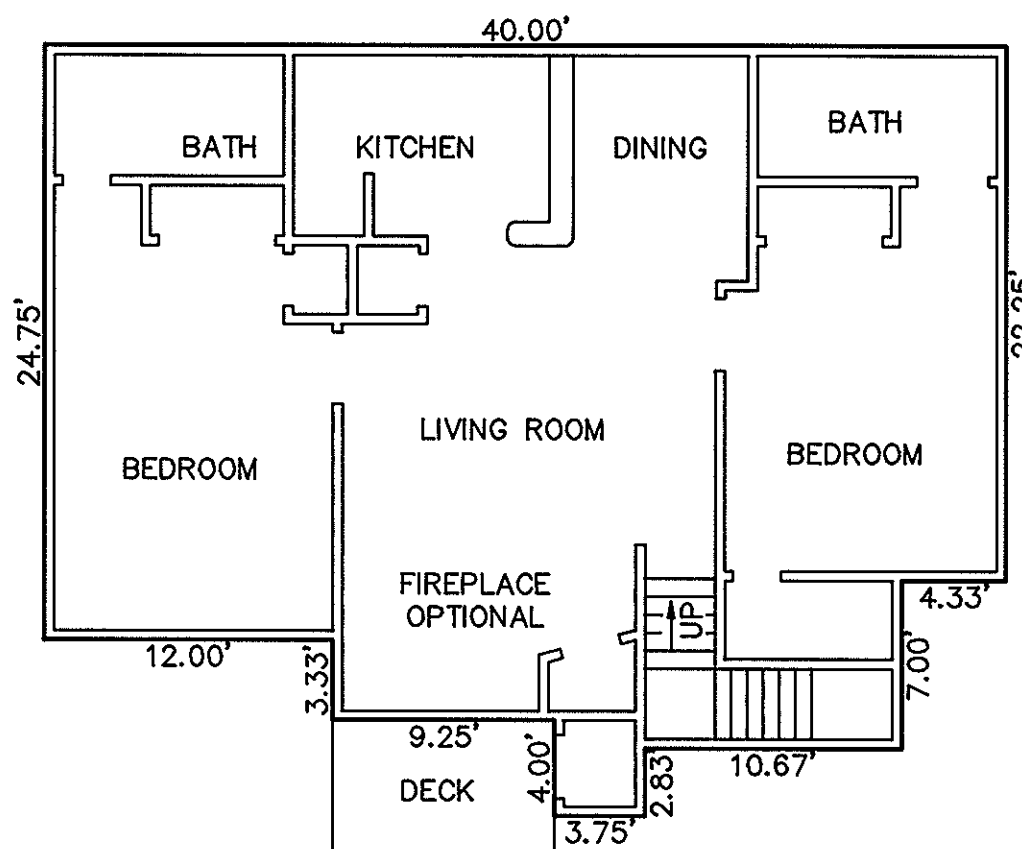
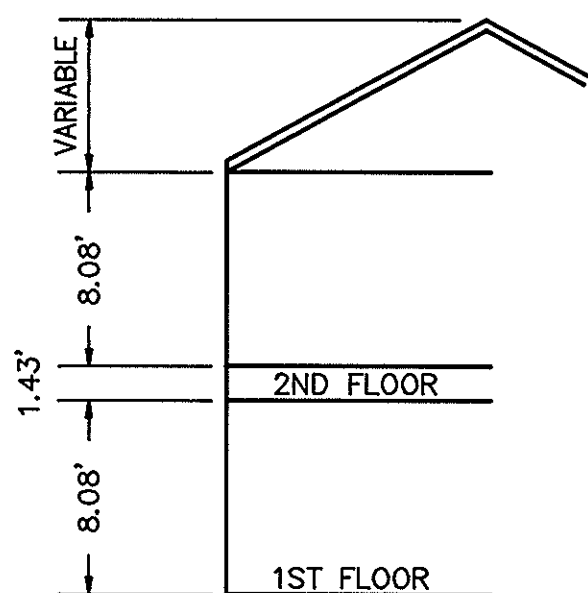
MODEL D - TYPICAL UNITS A, C & E
1ST FLOOR
W/ SUNROOM



MODEL D - TYPICAL UNITS B, D & F
1ST FLOOR
W/ PATIO



MODEL D - TYPICAL UNITS G, I & K
2ND FLOOR
W/ SUNROOM



MODEL D - TYPICAL UNITS H, J & L
2ND FLOOR W/ PORCH

EXHIBIT R
 PHASE XVII
 SHEET 2 OF 4
 PLAT OF
WILLIAMSBURG COMMONS CONDOMINIUMS
 FOR
 WILLIAMSBURG COMMONS, INC.,
 A VIRGINIA CORPORATION
 BRUTON DISTRICT - COUNTY OF YORK, VIRGINIA
 SCALE: 1/8" = 1'-0" APRIL 20, 1992



GRAPHIC SCALE
THE SIRINE GROUP, LTD.
 SURVEYORS • ENGINEERS • PLANNERS
 P.O. BOX 450, ROUTE 17
 WHITE MARSH, VIRGINIA 23183