

BUILDING 6

Units listed below will be addressed as follows: (Insert Unit #)  
Ironwood Drive

Unit No.	Lower Boundary Elevation*	Upper Boundary Elevation**
611	34.4	Varies 42.44-43.35
612	34.4	Varies 42.44-43.35
613	34.4	Varies 42.44-43.35
614	34.4	Varies 42.44-43.35
615	34.4	Varies 42.44-43.35
616	34.4	Varies 42.44-43.35
617	34.4	Varies 42.44-43.35
618	34.4	Varies 42.44-43.35
621	44.78	Varies 52.84-54.84
622	44.78	Varies 52.84-54.84
623	44.78	Varies 52.84-54.84
624	44.78	Varies 52.84-54.84
625	44.78	Varies 52.84-54.84
626	44.78	Varies 52.84-54.84
627	44.78	Varies 52.84-54.84
628	44.78	Varies 52.84-54.84

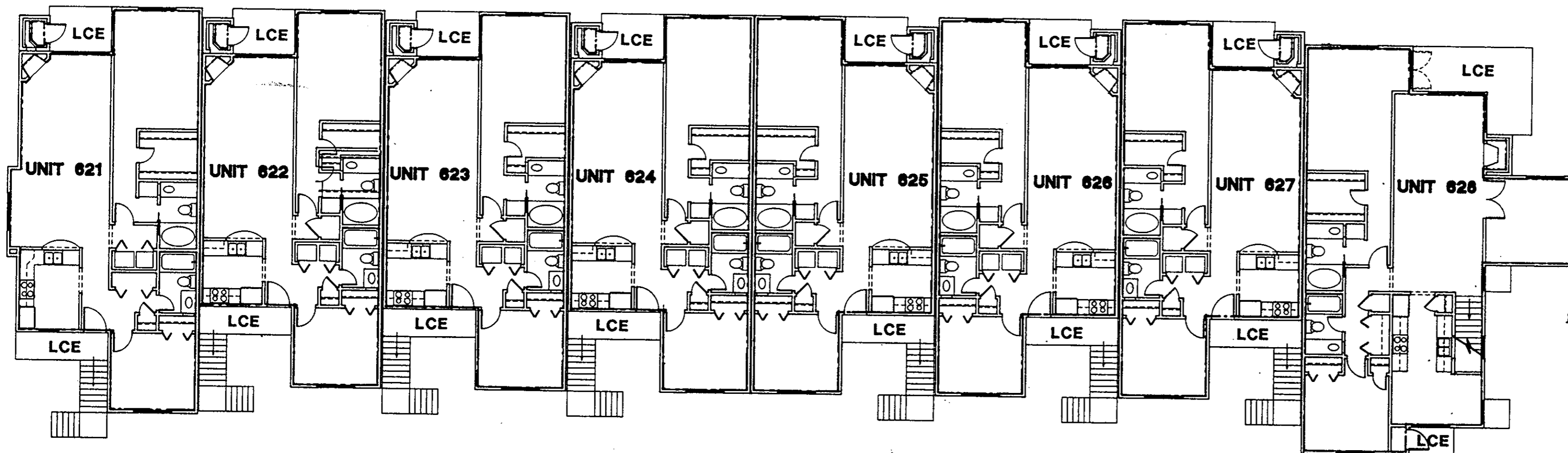
Note: The numerical value given as the lower boundary of each unit is the elevation of the horizontal plane of the upper surface of the gypsum-concrete floor topping of the unit.

\*\* Note: The numerical value given as the upper boundary of each unit is the elevation of the horizontal plane(s) of the upper (covered) surface of the gypsum board (or other material) constituting the exposed ceiling of the unit.

1ST FLOOR PLAN - BUILDING 6 UNITS 611-618

NOTE:  
SEE UNIT FLOOR PLANS FOR MORE DETAILED BOUNDARY AND COMMON ELEMENT INFORMATION

LEGEND:  
S.B. - SIDE (PERIMETER) BOUNDARY - - - - -  
LCE - LIMITED COMMON ELEMENT  
CE - COMMON ELEMENT



2ND FLOOR PLAN - BUILDING 6 UNITS 621-628

ARCHITECT'S CERTIFICATE

I hereby certify that this is a correct and accurate plan, that this plan is in compliance with Virginia Code Ann. Subsections 55-79.58 (b) and (e), and that the units depicted hereon have been substantially completed.

*Robert A. Magoon, Jr.*  
Robert A. Magoon, Jr., AIA  
Date *9/10/92*

Plat Book No. 11 Page 529  
Filed in the Clerk's Office, Circuit Court, York Co., Va.  
the 11th day of September, 1992  
Weste: *Karen Skelton*  
Nancy B. Karle, Clerk  
D.C.

NO.	DATE	REVISIONS	BY

Plat of Condominium  
EAGLE SOUND AT KILN CREEK  
YORK COUNTY, VIRGINIA

EXHIBIT  
A-3  
PHASE  
SIX

File  
9146.01A  
Date  
Sheet  
1 OF 5

WILLIAMS, TAZEWELL AND ASSOCIATES  
Architecture Engineering Planning Interiors  
710 West 21st Street  
Norfolk, Virginia 23517