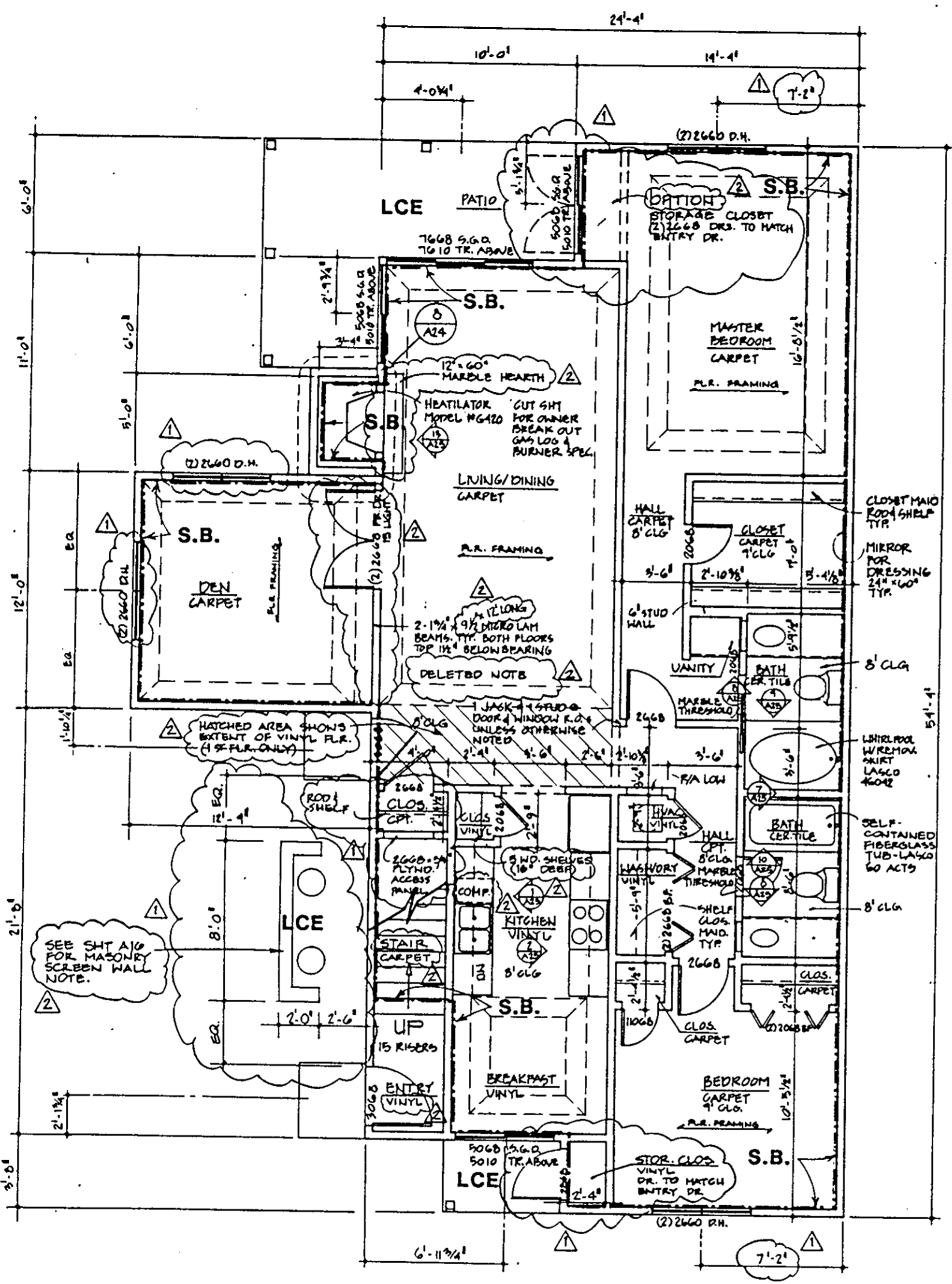
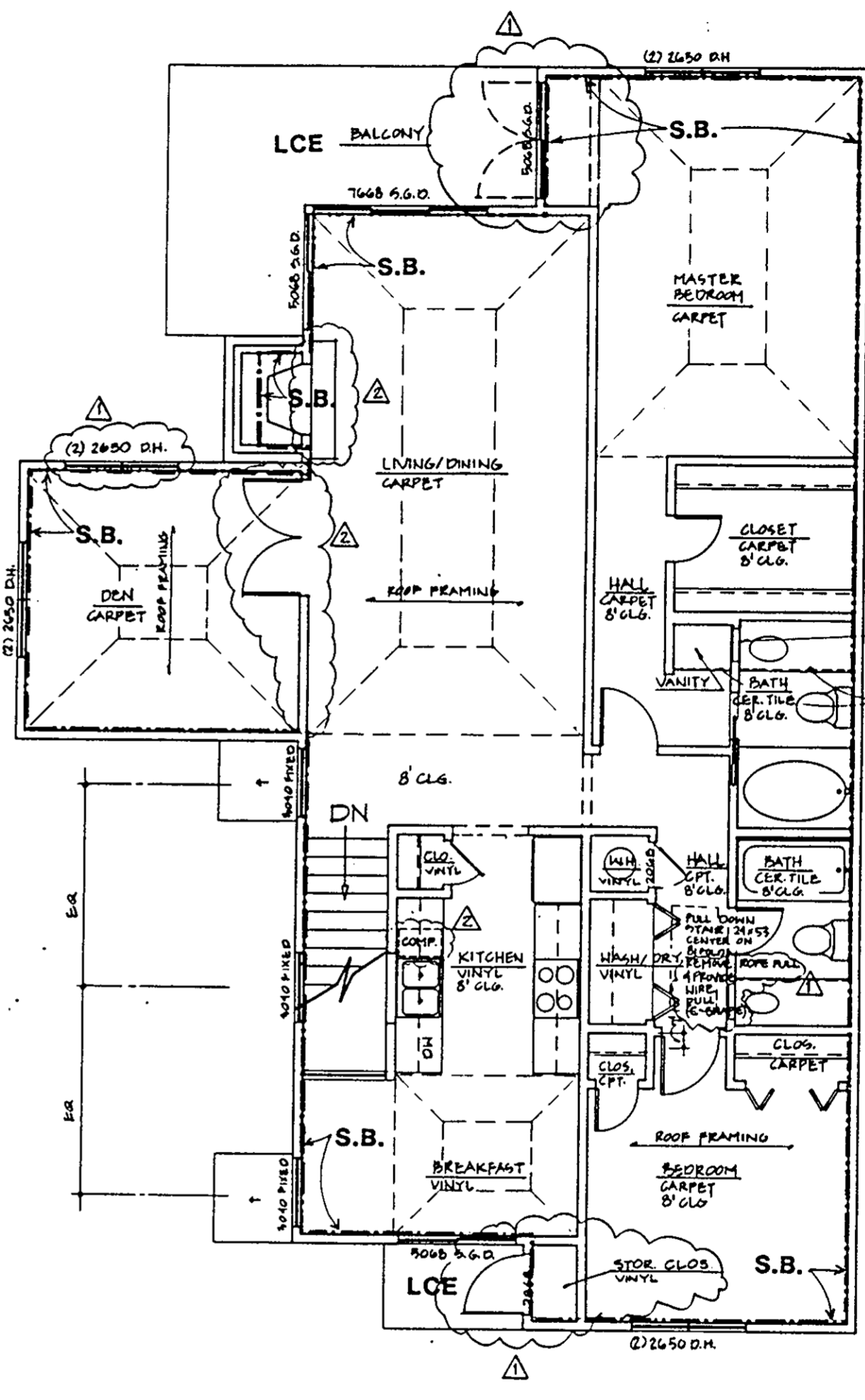


WILLIAMS, TAZEWELL AND ASSOCIATES
 Architecture Engineering Planning Interiors
 710 West 21st Street,
 Norfolk, Virginia 23517



FIRST FLR. PLAN - UNIT "A"
 1/4" = 1'-0"



SECOND FLR. PLAN - UNIT "A"
 1/4" = 1'-0"

MEDICINE CABINET
 NOTE #218
 (TYP)
 PULL DOWN FOR
 LIGHTING SEE
 DETAIL 15/218
 TYP.

NOTE:
 UNDER ALL FIBERGLASS
 TUB UNITS PLACE 8 GAL
 OF SPACKLE BELOW TO
 CONTOUR TO TUB PROFILE
 & PROVIDE SUPPORT-TYP.

ARCHITECT'S CERTIFICATE

I hereby certify that this is a correct and accurate plan, that this plan is in compliance with Virginia Code Ann. Subsections 55-79.58 (b) and (e), and that the units depicted hereon have been substantially completed.

Robert A. Magoon Jr.
 Robert A. Magoon Jr., AIA
 Date

LEGEND:
 S.B. - SIDE (PERIMETER) BOUNDARY
 LCE - LIMITED COMMON ELEMENT
 CE - COMMON ELEMENT

Plat Book No. 11 Page 530
 Filed in the Clerk's Office, Circuit Court, York Co., Va.
 the 11th day of September 1992
 Teste: Nancy B. Kane, Clerk 11:43 AM
Kenneth J. [Signature] D.C.

EXHIBIT
 A-3

PHASE
 SIX

NO.	DATE	REVISIONS	BY
1	10/26/91	ADDENDA REVISION	RAM