

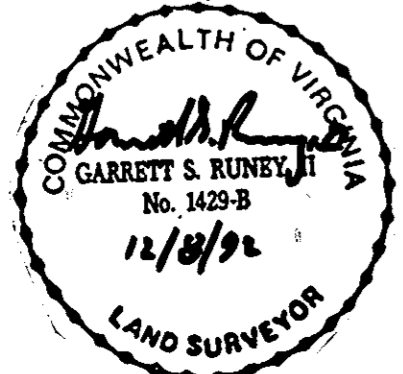
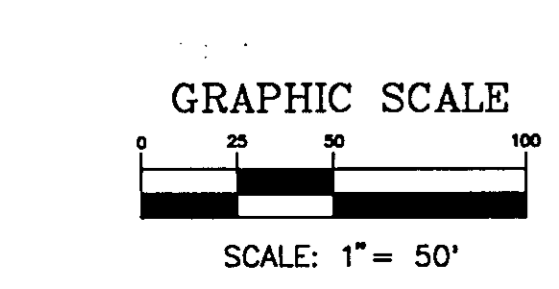
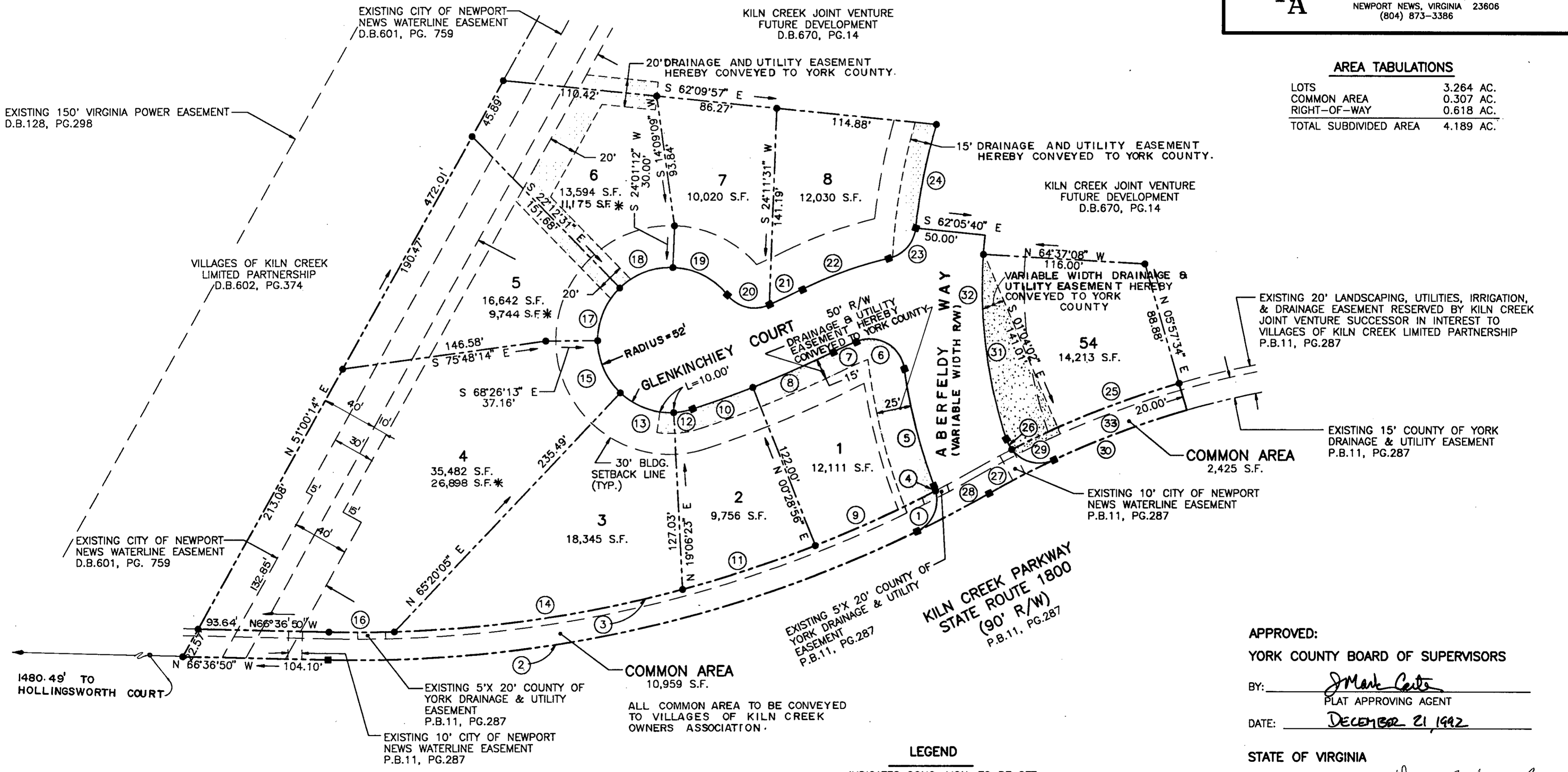
PLAT OF SUBDIVISION
 THE VILLAGES OF KILN CREEK
 SINGLE FAMILY AREA 8
THE HIGHLANDS
 SECTION ONE
 COUNTY OF YORK, VIRGINIA

DATE: 13 NOV., 1992 SHEET 2 OF 2 SCALE: 1"=50'

SRA SLEDD, RUNEY & ASSOCIATES, P.C.
 ENGINEERS PLANNERS SURVEYORS
 11832 ROCK LANDING DRIVE, SUITE 203
 NEWPORT NEWS, VIRGINIA 23606
 (804) 873-3386

AREA TABULATIONS

LOTS	3.264 AC.
COMMON AREA	0.307 AC.
RIGHT-OF-WAY	0.618 AC.
TOTAL SUBDIVIDED AREA	4.189 AC.



LEGEND

- INDICATES CONC. MON. TO BE SET
- INDICATES IRON PIPE TO BE SET
- INDICATES DRAINAGE & UTILITY EASEMENT HEREBY CONVEYED TO THE COUNTY OF YORK.
- INDICATES EXISTING EASEMENT AS NOTED
- * INDICATES AREA EXCLUSIVE OF THE AREA ENCUMBERED BY THE 150' VIRGINIA POWER EASEMENT.

APPROVED:
 YORK COUNTY BOARD OF SUPERVISORS
 BY: Mark Carter
 PLAT APPROVING AGENT
 DATE: DECEMBER 21 1992

STATE OF VIRGINIA
 COUNTY OF YORK Deed Book 700 page 99
 IN THE CLERK'S OFFICE OF THE CIRCUIT COURT FOR THE COUNTY OF YORK, THE 21 DAY OF December, 1992
 THIS MAP WAS PRESENTED AND ADMITTED TO RECORD AS THE LAW DIRECTS IN PLAT BOOK 11, PAGE 563.
 TESTE: NANCY B. KANE, CLERK
 CLERK
 BY: Carol Drosselmeier, Deputy Clerk