

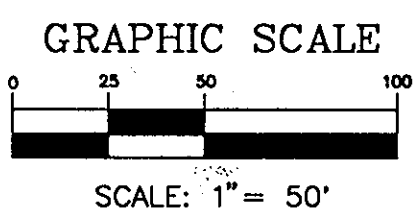
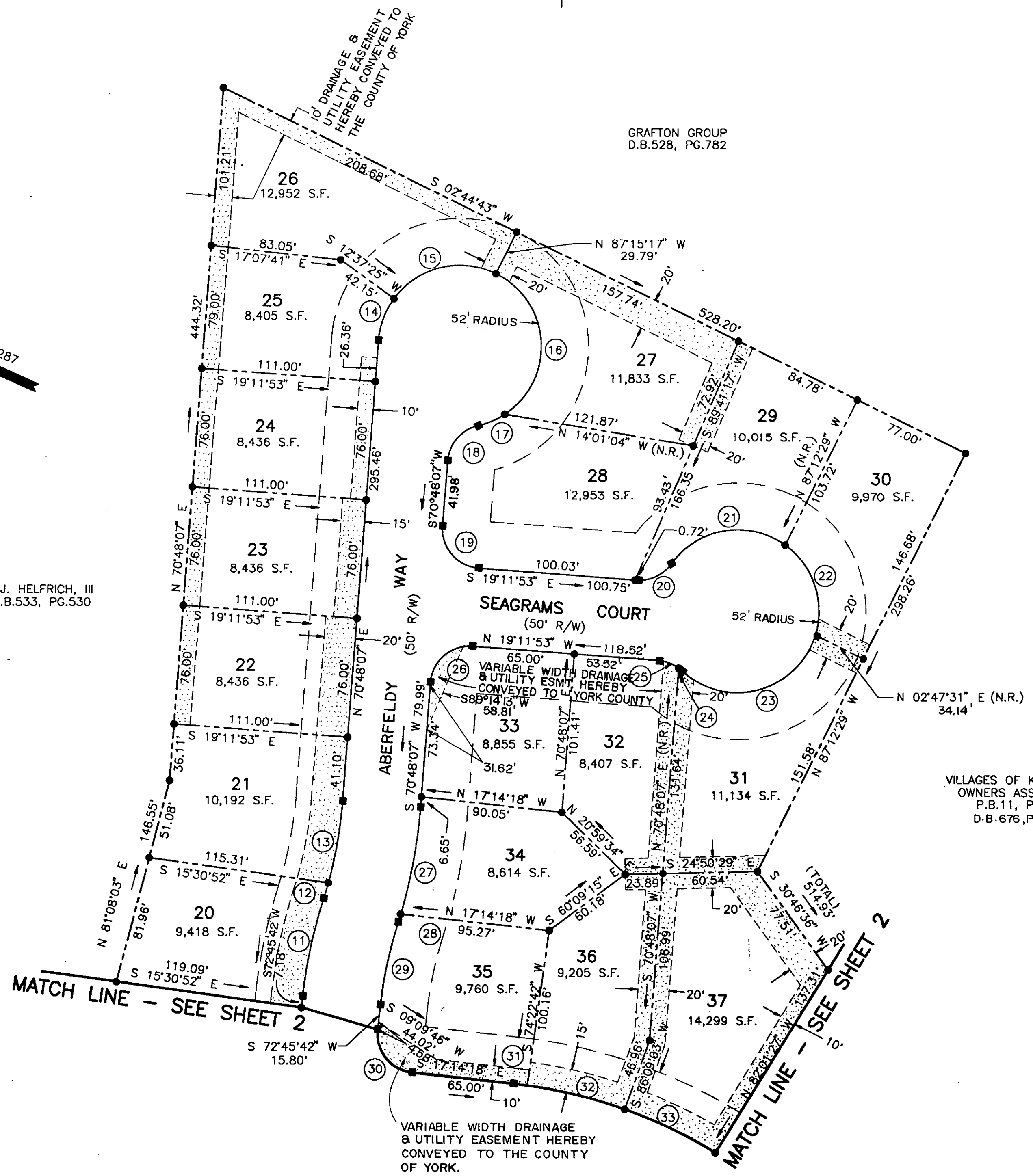
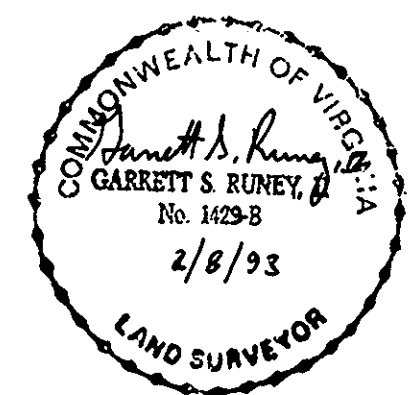
PLAT OF SUBDIVISION **579**  
 THE VILLAGES OF KILN CREEK  
 SINGLE FAMILY AREA 8  
**THE HIGHLANDS**  
 SECTION TWO  
 COUNTY OF YORK, VIRGINIA

DATE: DEC. 2, 1992 SHEET 3 OF 3 SCALE: 1"=50'

**SRA** SLEDD, RUNEY & ASSOCIATES, P.C.  
 ENGINEERS PLANNERS SURVEYORS  
 11832 ROCK LANDING DRIVE, SUITE 203  
 NEWPORT NEWS, VIRGINIA 23606  
 (804) 873-3386

**AREA TABULATIONS**

LOTS	11.527 AC.
COMMON AREA	0.199 AC.
RIGHT-OF-WAY	3.065 AC.
<b>TOTAL SUBDIVIDED AREA</b>	<b>14.791 AC.</b>



APPROVED:  
 YORK COUNTY BOARD OF SUPERVISORS  
 BY: Mad Carter  
 PLAT APPROVING AGENT  
 DATE: MARCH 15, 1993

STATE OF VIRGINIA  
 COUNTY OF YORK  
 IN THE CLERK'S OFFICE OF THE CIRCUIT COURT FOR THE COUNTY OF YORK, THE 15th DAY OF MARCH 1993  
 THIS MAP WAS PRESENTED AND ADMITTED TO RECORD AS THE LAW DIRECTS IN PLAT BOOK 11, PAGE 579

TESTE: NANCY B. KANE, CLERK  
 CLERK  
 BY: Doraine R. ...