

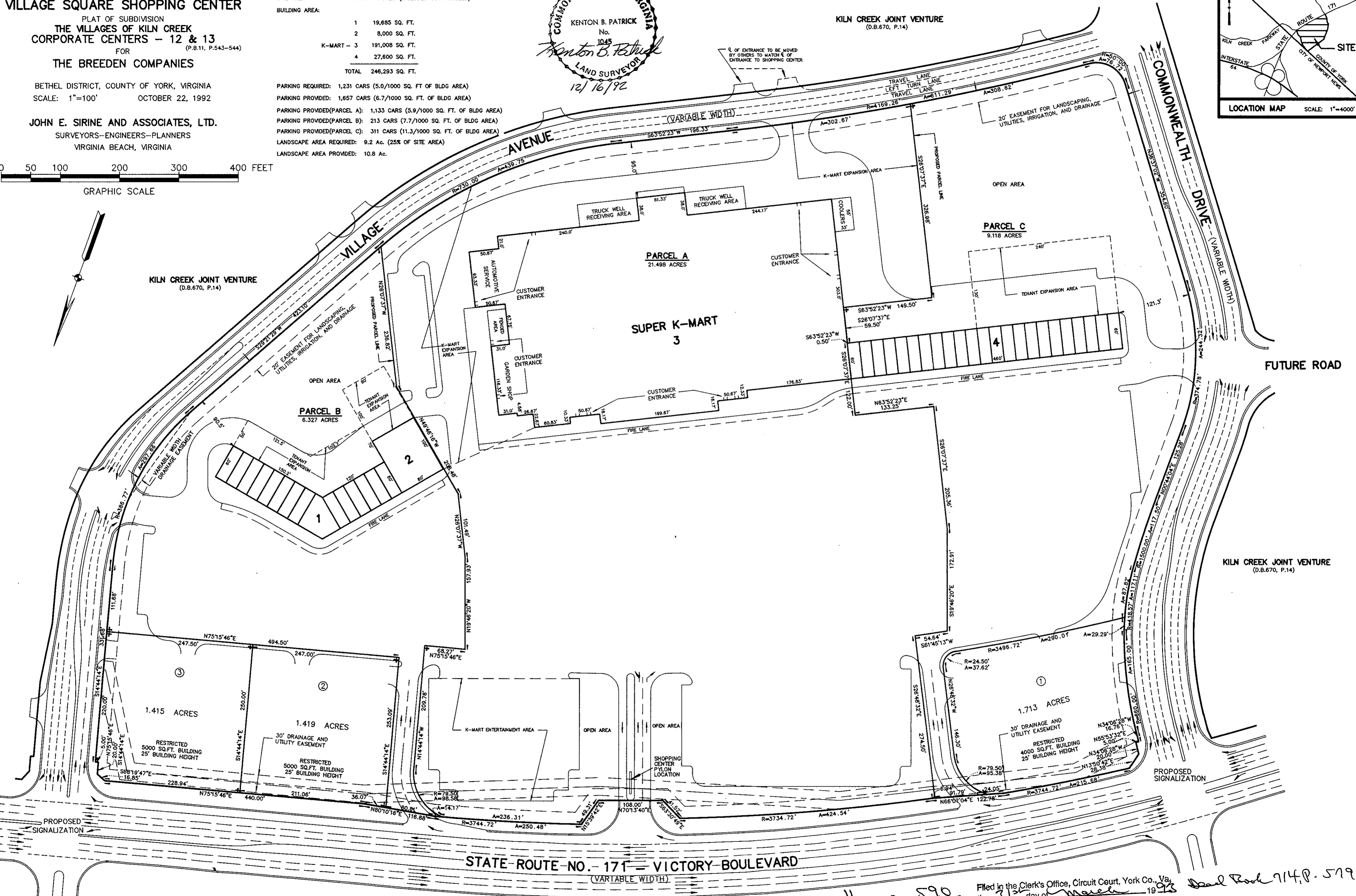
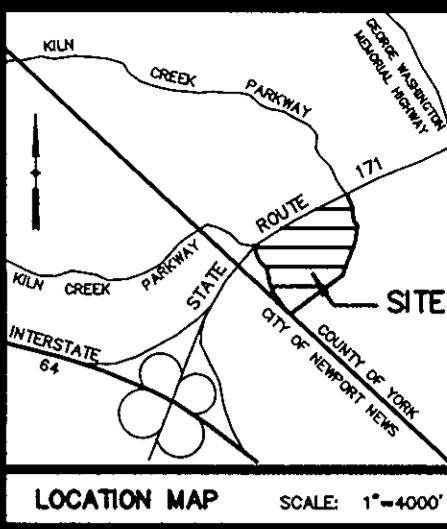
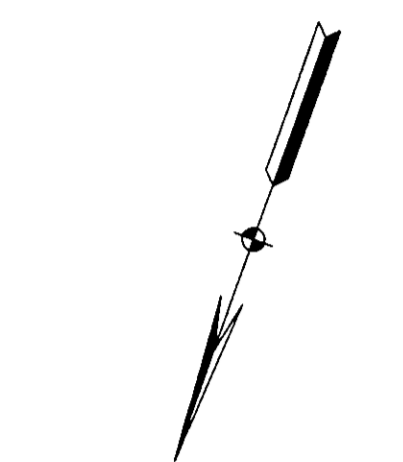
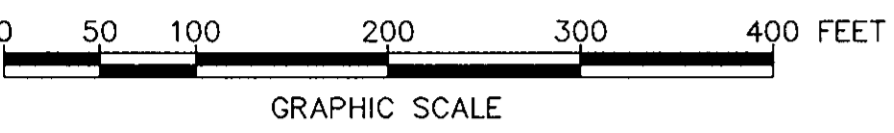
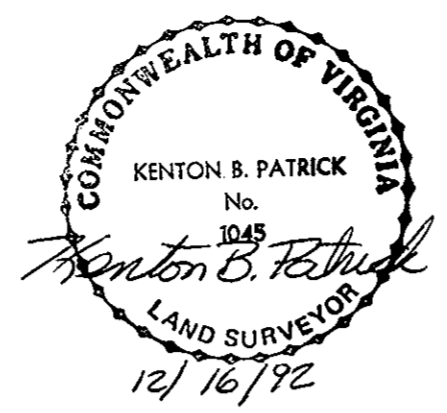
EXHIBIT 'B'
PRELIMINARY SITE PLAN
OF
VILLAGE SQUARE SHOPPING CENTER
PLAT OF SUBDIVISION
THE VILLAGES OF KILN CREEK
CORPORATE CENTERS - 12 & 13
FOR
THE BREEDEN COMPANIES

BETHEL DISTRICT, COUNTY OF YORK, VIRGINIA
SCALE: 1"=100' OCTOBER 22, 1992

JOHN E. SIRINE AND ASSOCIATES, LTD.
SURVEYORS-ENGINEERS-PLANNERS
VIRGINIA BEACH, VIRGINIA

SITE DATA

SITE AREA:	41.490 ACRES (INCLUDES OUT PARCELS)
BUILDING AREA:	
1	19,685 SQ. FT.
2	8,000 SQ. FT.
K-MART - 3	191,008 SQ. FT.
4	27,600 SQ. FT.
TOTAL	246,293 SQ. FT.
PARKING REQUIRED:	1,231 CARS (5.0/1000 SQ. FT. OF BLDG AREA)
PARKING PROVIDED:	1,857 CARS (6.7/1000 SQ. FT. OF BLDG AREA)
PARKING PROVIDED(PARCEL A):	1,133 CARS (5.9/1000 SQ. FT. OF BLDG AREA)
PARKING PROVIDED(PARCEL B):	213 CARS (7.7/1000 SQ. FT. OF BLDG AREA)
PARKING PROVIDED(PARCEL C):	311 CARS (11.3/1000 SQ. FT. OF BLDG AREA)
LANDSCAPE AREA REQUIRED:	9.2 AC. (25% OF SITE AREA)
LANDSCAPE AREA PROVIDED:	10.8 AC.



STATE ROUTE NO. 171 - VICTORY BOULEVARD
(VARIABLE WIDTH)

Plat Book No. 11 Page 590
NANCY B. KANE, CLERK

Filed in the Clerk's Office, Circuit Court, York Co., Va.
the 31st day of March 1992
Teste: Nancy B. Kane, Clerk D.C.

Deal Book 714.P. 579
REVISION: 12/16/92
REVISION: 12/11/92
REVISION: 11/19/92
REVISION: 11/16/92
REVISION: 11/05/92
REVISION: 10/27/92
SUPER K-MART SPACES