

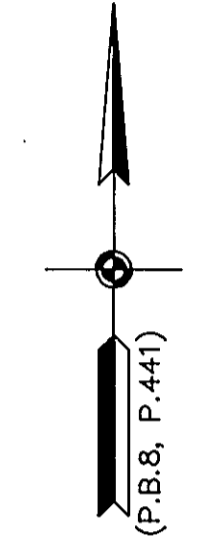
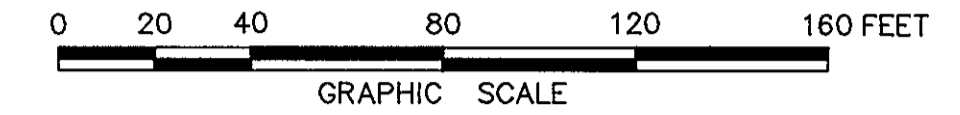
GRAFTON WOODS SECTION EIGHT

GRAFTON DISTRICT - COUNTY OF YORK, VIRGINIA

THE SIRINE GROUP, LTD.
 SURVEYORS • ENGINEERS • PLANNERS
 P.O. BOX 450, ROUTE 17
 WHITE MARSH, VIRGINIA 23183

SCALE: 1" = 40' MARCH 3, 1993

SHEET 2 OF 2



CURVE TABLE

NO.	RADIUS	DELTA	ARC	TANGENT	CHORD	CHORD BRG.
1	368.03'	22°24'16"	143.91'	72.89'	143.00'	S11°22'56"E
2	19.00'	89°32'12"	29.69'	18.85'	26.76'	S48°30'12"E
3	3.00'	90°00'00"	4.71'	3.00'	4.24'	N48°16'18"W
4	3.00'	90°00'00"	4.71'	3.00'	4.24'	S41°43'42"W
5	19.00'	88°41'31"	29.41'	18.57'	26.56'	S42°22'56"W
6	3.00'	91°46'17"	4.81'	3.09'	4.31'	S47°50'58"E
7	3.00'	90°00'00"	4.71'	3.00'	4.24'	S41°15'54"W
8	19.00'	90°27'48"	30.00'	19.15'	26.98'	N41°29'48"E
9	19.00'	89°32'12"	29.69'	18.85'	26.76'	S48°30'12"E
10	6.00'	90°00'00"	9.42'	6.00'	8.49'	S41°43'42"W
11	6.00'	90°00'00"	9.42'	6.00'	8.49'	S48°16'18"E

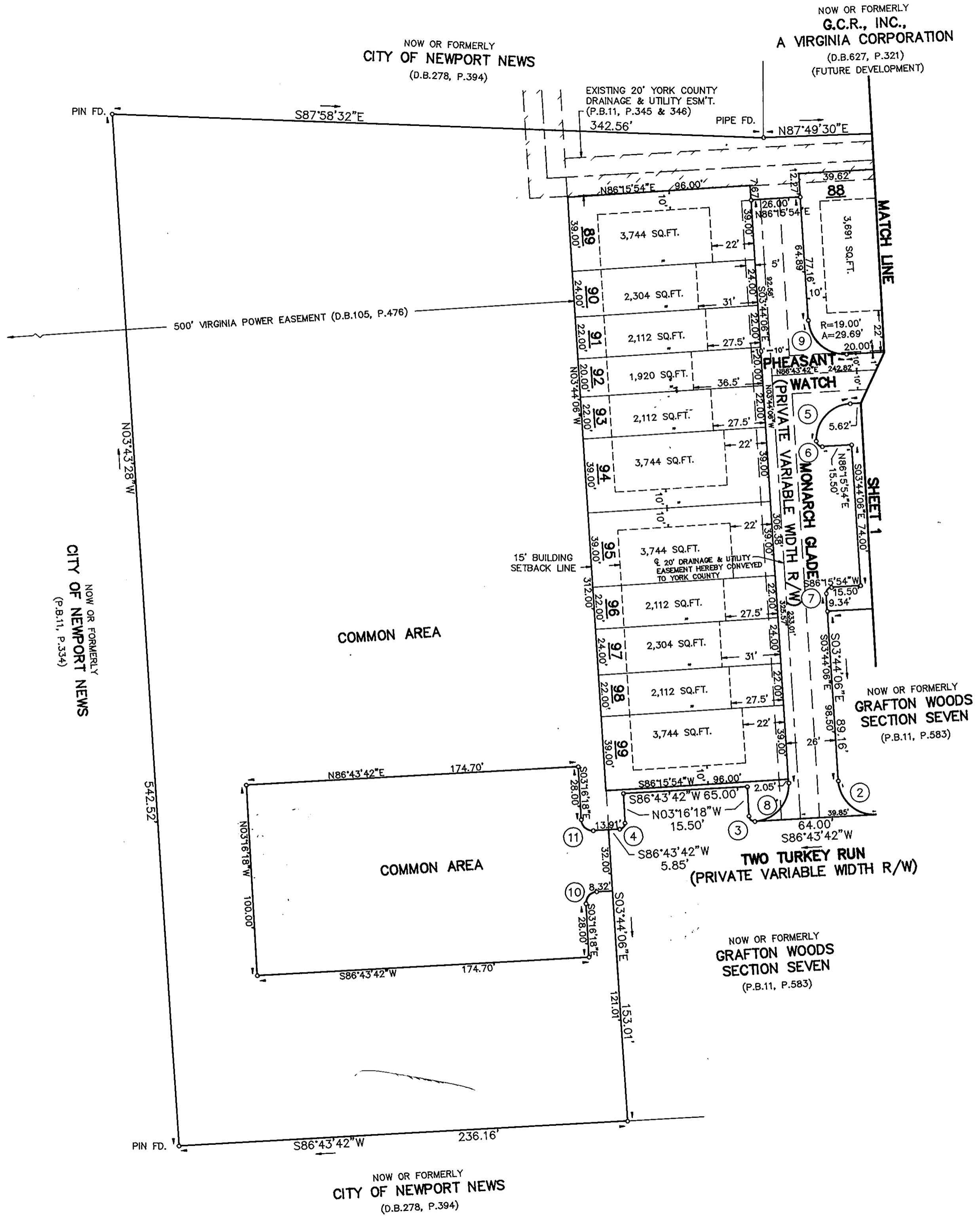


APPROVED:
 YORK COUNTY BOARD OF SUPERVISORS
 BY: Mark Carter
 PLAT APPROVING AGENT
 DATE: April 30, 1993

STATE OF VIRGINIA
 COUNTY OF YORK
 IN THE CLERK'S OFFICE OF THE CIRCUIT COURT FOR
 THE COUNTY OF YORK THE 30th DAY OF April,
 1993, THIS PLAT WAS PRESENTED AND ADMITTED TO
 RECORD AS THE LAW DIRECTS IN PLAT BOOK 11,
 PAGE 598.

TESTE: NANCY B. KANE, CLERK
 CLERK
 BY: James D. Derry

PROPERTY IS A PORTION OF ASSESSOR'S PARCEL
 NUMBERS 29-6, 6A AND 7.



NOW OR FORMERLY
CITY OF NEWPORT NEWS
 (D.B.278, P.394)

NOW OR FORMERLY
G.C.R., INC.,
 A VIRGINIA CORPORATION
 (D.B.627, P.321)
 (FUTURE DEVELOPMENT)

NOW OR FORMERLY
CITY OF NEWPORT NEWS
 (P.B.11, P.334)

NOW OR FORMERLY
CITY OF NEWPORT NEWS
 (D.B.278, P.394)

NOW OR FORMERLY
GRAFTON WOODS SECTION SEVEN
 (P.B.11, P.583)

NOW OR FORMERLY
GRAFTON WOODS SECTION SEVEN
 (P.B.11, P.583)