

1ST FLOOR PLAN - BUILDING 2 UNITS 211-216

**NOTE:**  
SEE UNIT FLOOR PLANS FOR MORE DETAILED  
BOUNDARY AND COMMON ELEMENT INFORMATION

**LEGEND:**  
S.B. - SIDE (PERIMETER) BOUNDARY - - - - -  
LCE - LIMITED COMMON ELEMENT  
CE - COMMON ELEMENT

**BUILDING 2**  
Units listed below will be addressed as follows:  
(Insert Unit #) Persimmon Drive

Unit No.	Lower Boundary Elevation*	Upper Boundary Elevation**
211	34.2	Varies 42.24-43.15
212	34.2	Varies 42.24-43.15
213	34.2	Varies 42.24-43.15
214	34.2	Varies 42.24-43.15
215	34.2	Varies 42.24-43.15
216	34.2	Varies 42.24-43.15
221	44.58	Varies 52.64-54.64
222	44.58	Varies 52.64-54.64
223	44.58	Varies 52.64-54.64
224	44.58	Varies 52.64-54.64
225	44.58	Varies 52.64-54.64
226	44.58	Varies 52.64-54.64

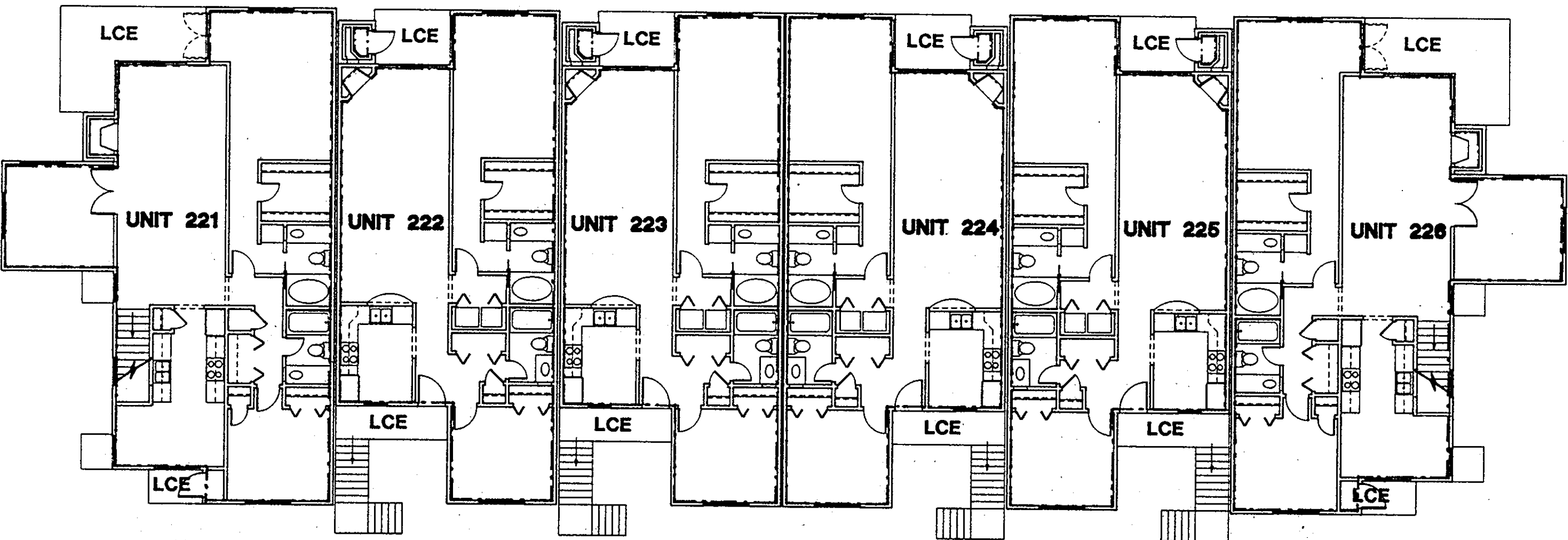
\* Note: The numerical value given as the lower boundary of each unit is the elevation of the horizontal plane of the upper surface of the gypsum-concrete floor topping of the unit.

\*\* Note: The numerical value given as the upper boundary of each unit is the elevation of the horizontal plane(s) of the upper (covered) surface of the gypsum board (or other material) constituting the exposed ceiling of the unit.

**ARCHITECT'S CERTIFICATE**

I hereby certify that this is a correct and accurate plan, that this plan is in compliance with Virginia Code Ann. Subsections 55-79.58 (b) and (e), and that the units depicted hereon have been substantially completed.

*[Signature]* 5/10/93  
Robert A. Magoon Jr., AIA Date



2ND FLOOR PLAN - BUILDING 2 UNITS 221-226

Filed in the Clerk's Office, Circuit Court, York Co., Va.  
the 17<sup>th</sup> day of May 1993  
11:15  
Tested by Nancy B. Kane, Clerk  
*[Signature]* D.C.  
plat BK 11 page 607

NO.	DATE	REVISIONS	BY

WILLIAMS, TAZEWELL AND ASSOCIATES  
Architecture Engineering Planning Interiors  
710 West 21st Street  
Norfolk, Virginia 23517

Plat of Condominium  
EAGLE SOUND AT KILN CREEK  
YORK COUNTY, VIRGINIA

EXHIBIT  
A-3  
PHASE  
TWO

File  
Date  
Sheet