

PLAT OF SUBDIVISION
**YORKSHIRE DOWNS
PHASE 3**
SECTION B

COUNTY OF YORK, VIRGINIA

DATE: 15 MAR., 1993 SHEET 3 OF 3 SCALE: 1"=50'



SLEDD, RONEY & ASSOCIATES, P.C.
ENGINEERS PLANNERS SURVEYORS
11832 ROCK LANDING DRIVE, SUITE 203
NEWPORT NEWS, VIRGINIA 23606
(804) 873-3386

LEGEND

- INDICATES CONC. MON. TO BE SET
- INDICATES IRON PIPE TO BE SET
- - - - - INDICATES DRAINAGE & UTILITY EASEMENT HEREBY CONVEYED TO THE COUNTY OF YORK, WIDTH AS NOTED
- INDICATES DRAINAGE EASEMENT HEREBY CONVEYED TO THE VIRGINIA DEPT. OF TRANSPORTATION (VDOT), WIDTH AS NOTED

NOW OR FORMERLY
BERNICE J. DENNIS, ET AL
D.B. 271, PG. 740

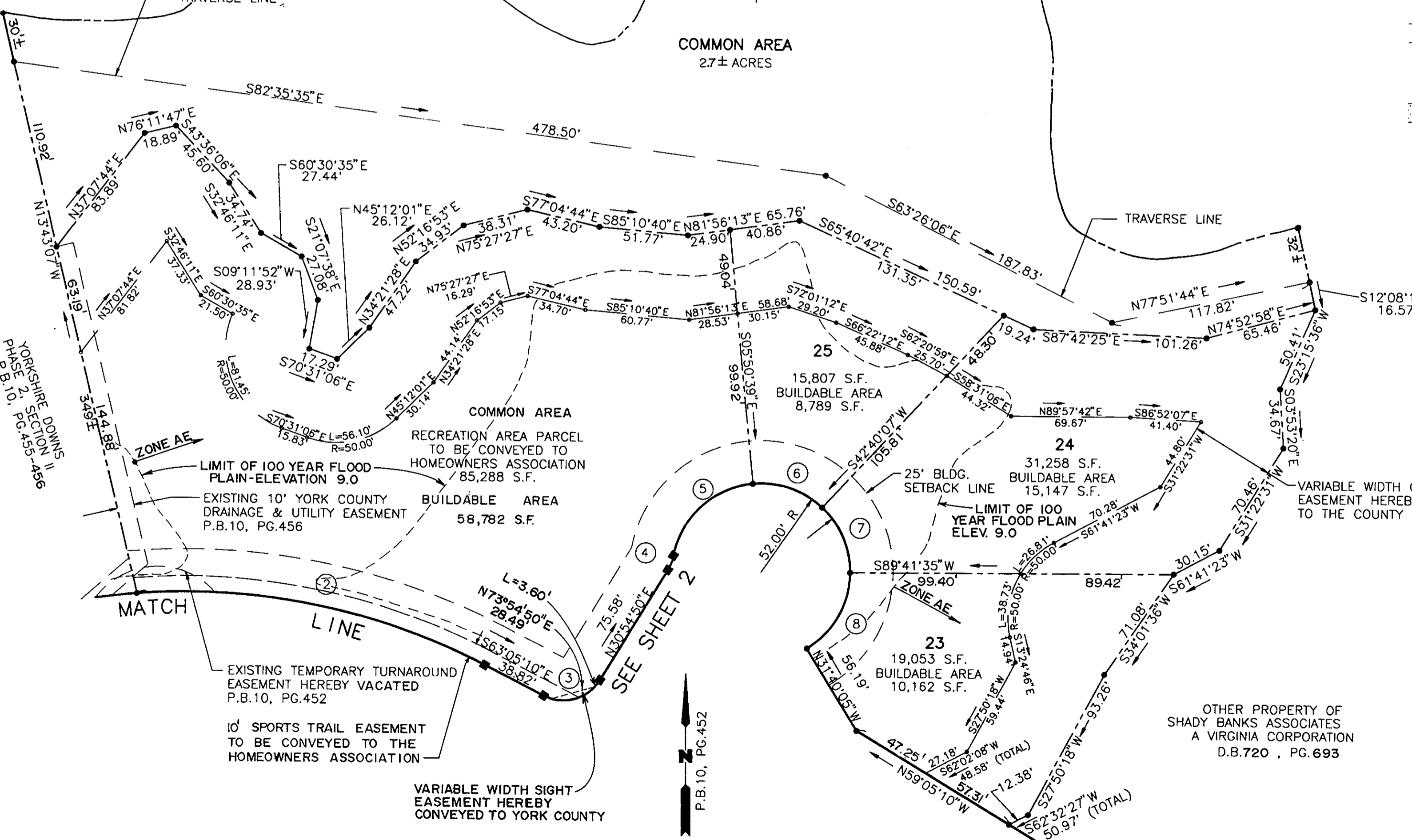
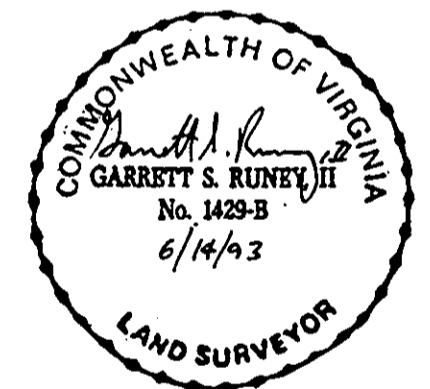
APPROXIMATE
LOCATION OF
WYTHE CREEK

CL OF CREEK IS
PROPERTY LINE

COMMON AREA
2.7± ACRES

TRAVERSE LINE

TRAVERSE LINE



APPROVED:
YORK COUNTY BOARD OF SUPERVISORS
BY: [Signature]
PLAT APPROVING AGENT
DATE: July 13, 1993

STATE OF VIRGINIA
COUNTY OF YORK

IN THE CLERK'S OFFICE OF THE CIRCUIT COURT FOR
THE COUNTY OF YORK, THE 14th DAY OF July, 1993.
THIS MAP WAS PRESENTED AND ADMITTED TO RECORD AS
THE LAW DIRECTS IN PLAT BOOK 11, PAGE 631

TESTE: NANCY B. KANE, CLERK

BY: [Signature]
CLERK

OTHER PROPERTY OF
SHADY BANKS ASSOCIATES
A VIRGINIA CORPORATION
D.B. 720 , PG. 693

GRAPHIC SCALE



SCALE: 1"=50'

CURVE DATA TABLE LOCATED ON SHEET 2