

N/F
GREG W. BUNTON
D.B.583, PG.417

N/F
NICOLE J. WILLIS
D.B.284, PG.567

N/F
ALICE R. AIKENS
D.E.369, PG.332

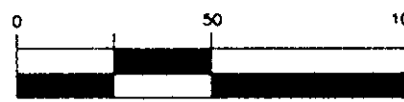
N/F
AL N. SYKES
D.B.453, PG.809

N/F
KENNETH W. WILSON
D.B.441, PG.779

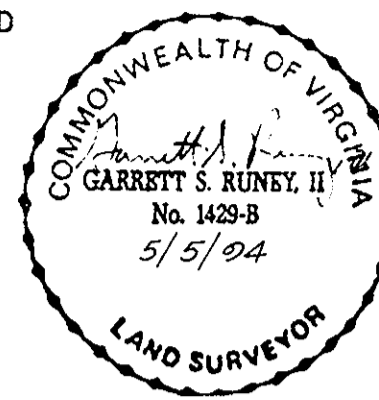
LEGEND

- INDICATES CONC. MON. TO BE SET
- INDICATES IRON PIPE TO BE SET
- INDICATES CONC. MON. FOUND
- INDICATES IRON PIPE FOUND
- INDICATES EASEMENT HEREBY CONVEYED AS NOTED
- - - INDICATES EXISTING EASEMENT AS NOTED
- * INDICATES PROPOSED DRAINAGE EASEMENT HEREBY CONVEYED TO THE VIRGINIA DEPARTMENT OF TRANSPORTATION (VDOT) AS NOTED

GRAPHIC SCALE



SCALE: 1" = 50'



WATERLINE EASEMENT PLAT 108

OAKWOOD
SINGLE FAMILY AREA 10

COUNTY OF YORK, VIRGINIA

DATE: 5/5/94 SHEET 2 OF 3 SCALE: 1" = 50'



SLEDD, RUNEY & ASSOCIATES, P.C.
ENGINEERS PLANNERS SURVEYORS
11832 ROCK LANDING DRIVE, SUITE 203
NEWPORT NEWS, VIRGINIA 23606
(804) 873-3386

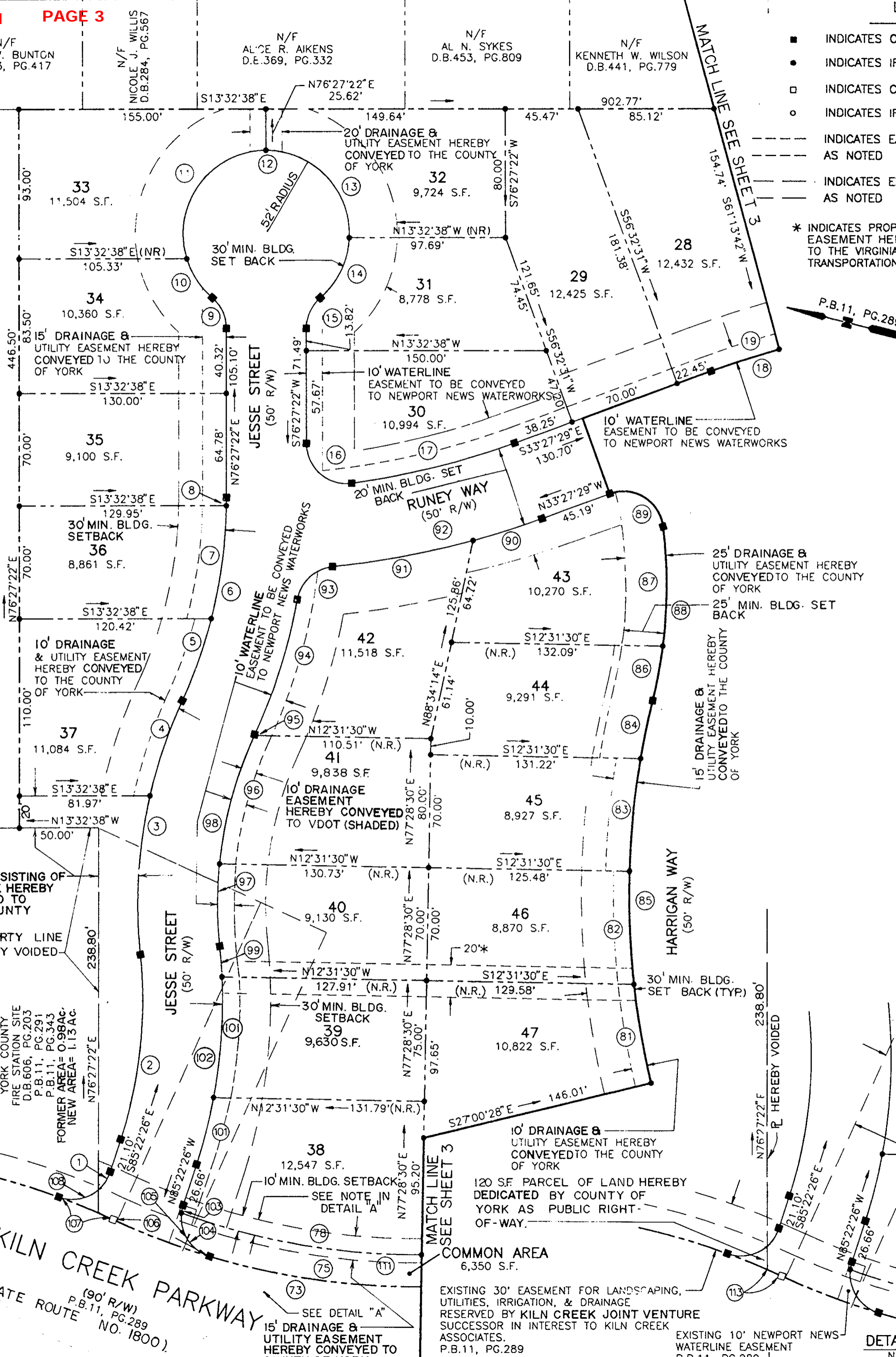
YORK COUNTY SCHOOL SITE
D.B.606, PG.198
P.B.11, PG.291
P.B.11, PG.343

AREA CONSISTING OF 0.15 ACRE HEREBY CONVEYED TO YORK COUNTY

PROPERTY LINE HEREBY VOIDED

YORK COUNTY FIRE STATION SITE
D.B.606, PG.203
P.B.11, PG.291
P.B.11, PG.343
FORMER AREA= 0.98 AC.
NEW AREA= 1.15 AC.

KILN CREEK PARKWAY
(STATE ROUTE NO. 1800)
P.B.11, PG.289



CURVE DATA TABLE CONTINUED FROM SHEET 1

CURVE	DELTA	RADIUS	LENGTH	TANGENT	CHORD	BEARING
66	14°24'30"	745.00'	187.35'	94.17'	186.85'	S21°56'29"E
67	16°16'57"	775.00'	220.24'	110.87'	219.50'	N22°52'43"W
68	00°18'18"	775.00'	4.13'	2.06'	4.13'	S14°53'24"E
69	05°21'17"	775.00'	72.43'	36.24'	72.40'	S17°43'11"E
70	05°18'51"	775.00'	71.88'	35.97'	71.86'	S23°03'16"E
71	05°18'31"	775.00'	71.81'	35.93'	71.78'	S28°21'57"E
72	06°09'54"	745.00'	80.16'	40.12'	80.12'	S32°13'41"E
73	46°31'54"	455.00'	369.52'	195.63'	359.45'	S12°02'40"E
74	02°17'30"	455.00'	18.20'	9.10'	18.20'	N34°09'52"W
75	36°05'06"	455.00'	286.56'	148.21'	281.85'	N14°58'34"W
76	21°27'22"	435.00'	162.90'	82.41'	161.95'	N24°34'57"W
77	00°32'27"	765.00'	7.22'	3.61'	7.22'	S35°02'24"E
78	20°09'58"	435.00'	153.10'	77.35'	152.32'	N03°46'17"W
79	79°52'09"	25.00'	34.85'	20.93'	32.10'	N72°57'12"W
80	05°51'39"	501.00'	51.25'	25.65'	51.22'	N60°03'42"E
81	07°07'28"	501.00'	62.30'	31.19'	62.26'	N66°33'15"E
82	08°01'32"	501.00'	70.18'	35.15'	70.12'	N74°07'46"E
83	08°02'20"	501.00'	70.29'	35.20'	70.23'	N82°09'42"E
84	04°12'01"	501.00'	36.73'	18.37'	36.72'	N88°16'52"E
85	33°15'00"	501.00'	290.74'	149.59'	286.68'	S73°45'23"W
86	06°34'35"	300.00'	34.43'	17.24'	34.42'	S87°05'35"W
87	14°11'04"	300.00'	71.27'	37.33'	74.08'	S76°42'46"W
88	20°45'39"	300.00'	108.70'	54.95'	108.11'	N80°00'03"E
89	10°30'43"	25.00'	44.98'	31.47'	39.15'	N18°04'52"E
90	04°45'00"	544.02'	45.10'	22.56'	45.09'	N31°04'59"W
91	09°25'05"	544.02'	89.43'	44.81'	89.32'	N23°59'57"W
92	14°10'05"	544.02'	134.53'	67.61'	134.18'	S26°22'27"E
93	73°50'10"	25.00'	32.22'	18.78'	30.03'	N56°12'29"W
94	14°26'55"	350.00'	88.26'	44.37'	88.03'	N89°54'07"W
95	00°09'46"	250.00'	0.71'	0.36'	0.71'	S78°45'32"E
96	18°59'54"	250.00'	82.90'	41.83'	82.52'	S88°20'22"E
97	11°43'03"	250.00'	51.13'	25.65'	51.04'	N76°18'10"E
98	30°52'42"	250.00'	134.73'	69.05'	133.11'	S85°53'00"W
99	03°21'36"	325.00'	19.06'	9.53'	19.06'	S72°07'27"W
100	13°16'10"	325.00'	75.27'	37.80'	75.10'	S80°26'20"W
101	07°33'09"	325.00'	42.84'	21.45'	42.81'	N89°09'01"W
102	24°10'55"	325.00'	137.17'	69.62'	136.15'	N82°32'06"E
103	11°28'10"	25.00'	5.00'	2.51'	5.00'	N86°53'29"E
104	80°05'26"	25.00'	34.95'	21.01'	32.17'	N43°06'41"E
105	91°33'35"	25.00'	39.95'	25.69'	35.83'	S48°50'46"W
106	08°09'18"	455.00'	64.76'	32.44'	64.71'	N07°08'38"E
107	04°45'26"	445.00'	36.95'	18.48'	36.94'	S08°50'34"W
108	61°20'06"	25.00'	26.76'	14.82'	25.50'	S24°12'12"E
109	20°34'24"	745.00'	267.51'	135.21'	266.07'	N25°01'25"W
110	09°58'51"	25.00'	4.35'	2.3'	4.35'	N62°07'18"E
111	41°37'20"	435.00'	316.00'	165.34'	309.10'	N14°29'58"W
112	88°55'58"	300.00'	99.13'	50.02'	98.68'	N79°54'38"E
113	01°16'57"	445.00'	9.96'	4.98'	9.96'	N10°34'47"E

EXISTING 45' YORK COUNTY NONEXCLUSIVE INGRESS/EGRESS EASEMENT FOR FIRE STATION. (P.B. II, PG.289) HEREBY VACATED.

EXISTING VARIABLE WIDTH YORK COUNTY EXCLUSIVE INGRESS/EGRESS EASEMENT FOR FIRE STATION SITE. (P.B. II, PG.289) HEREBY VACATED.

EXISTING 30' EASEMENT FOR LANDSCAPING, UTILITIES, IRRIGATION AND DRAINAGE RESERVED BY KILN CREEK JOINT VENTURE SUCCESSOR IN INTEREST TO KILN CREEK ASSOCIATES P.B.11, PG.289

EXISTING 15' YORK COUNTY DRAINAGE & UTILITY EASEMENT D.B.11, PG.289

15' DRAINAGE & UTILITY EASEMENT HEREBY CONVEYED TO COUNTY OF YORK

DETAIL "A"
N.T.S.

Plot Book No. 12 Page 108

NANCY B. KANE, CLERK
Filed in the Clerk's Office, Circuit Court, York Co., Va.
the 5 day of August 1994

Testis:
Nancy B. Kane, Clerk
Paul Book 808 Page 782

Print N^o N-8682-85
Cost Est N^o 105F493