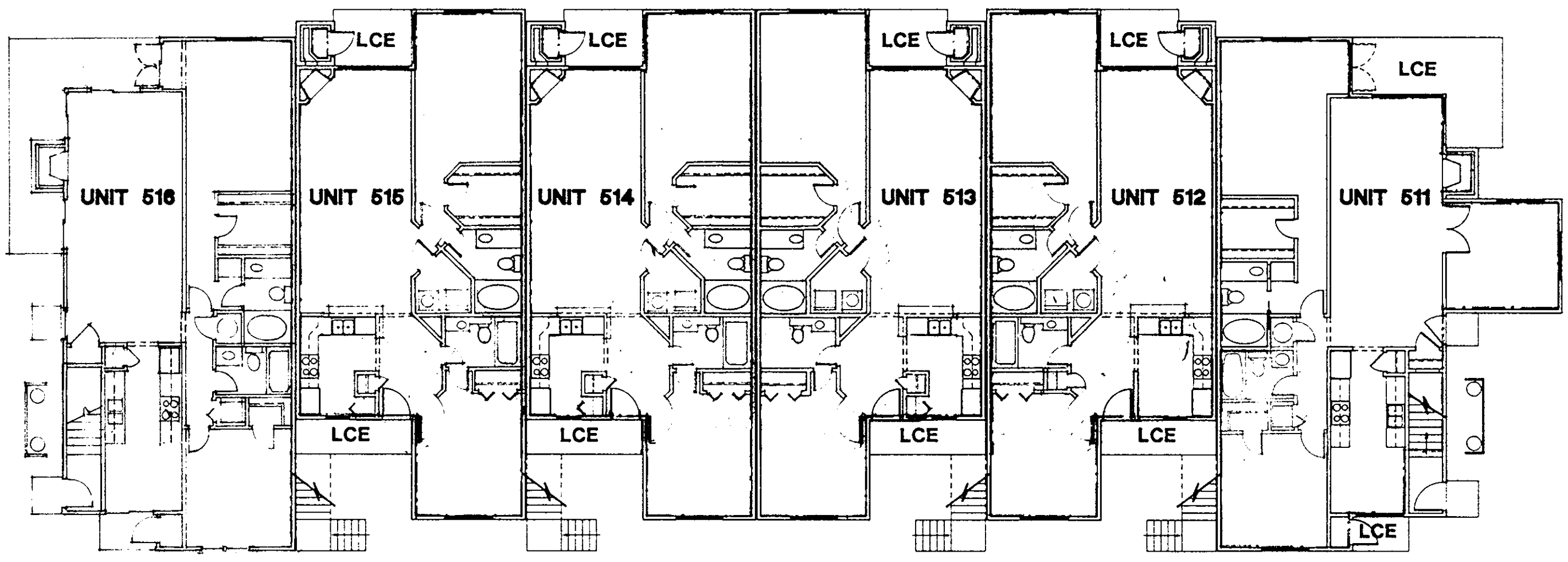


WILLIAMS, TAZEWELL AND ASSOCIATES  
 Architecture Engineering Planning Interiors  
 710 West 21st Street,  
 Norfolk, Virginia 23517



1ST FLOOR PLAN - BUILDING 5 UNITS 511-516

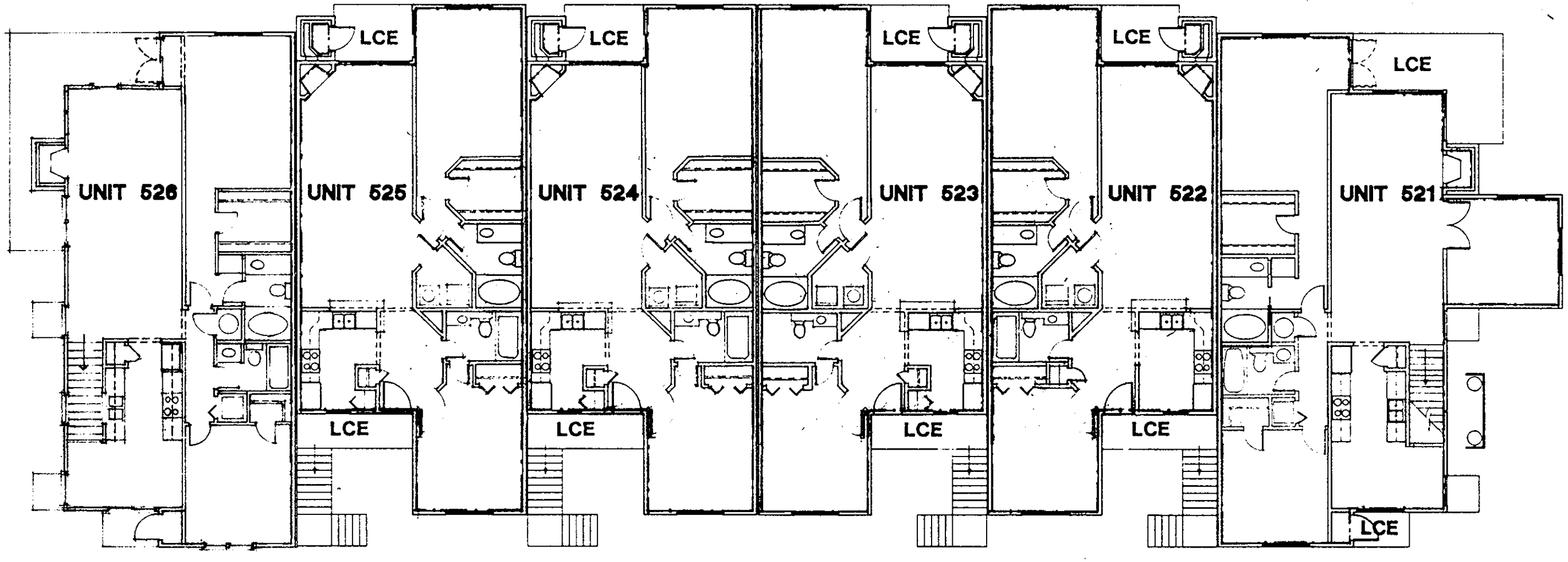
**NOTE:**  
 SEE UNIT FLOOR PLANS FOR MORE DETAILED  
 BOUNDARY AND COMMON ELEMENT INFORMATION

**LEGEND:**  
 S.B. - SIDE (PERIMETER) BOUNDARY - - - - -  
 LCE - LIMITED COMMON ELEMENT  
 CE - COMMON ELEMENT

BUILDING 5  
 Units listed below will be addressed as follows:  
 (Insert Unit #) Ironwood Drive

Unit No.	Lower Boundary Elevation*	Upper Boundary Elevation**
511	34.4	Varies 42.44-43.35
512	34.4	Varies 42.44-43.35
513	34.4	Varies 42.44-43.35
514	34.4	Varies 42.44-43.35
515	34.4	Varies 42.44-43.35
516	34.4	Varies 42.44-43.35
521	44.78	Varies 52.84-54.84
522	44.78	Varies 52.84-54.84
523	44.78	Varies 52.84-54.84
524	44.78	Varies 52.84-54.84
525	44.78	Varies 52.84-54.84
526	44.78	Varies 52.84-54.84

\* Note: The numerical value given as the lower boundary of each unit is the elevation of the horizontal plane of the upper surface of the gypsum-concrete floor topping of the unit.  
 \*\* Note: The numerical value given as the upper boundary of each unit is the elevation of the horizontal plane(s) of the upper (covered) surface of the gypsum board (or other material) constituting the exposed ceiling of the unit.



2ND FLOOR PLAN - BUILDING 5 UNITS 521-526

I hereby certify that this is a correct and accurate plan, that this plan is in compliance with Virginia Code Ann. Subsections 55-79.58 (b) and (e), and that the units depicted hereon have been substantially completed.  
 Daniel S. Remy, A.P.E.

Filed in the Clerk's Office, Circuit Court, York Co., Va.  
 the 22<sup>nd</sup> day of December 1994  
 Teste: 3:17 PM  
 Nancy B. Kane, Clerk  
 D.C.

Plat BK 12 pg 172

NO.	DATE	REVISIONS	BY

Plat of Condominium  
 EAGLE SOUND AT KILN CREEK  
 YORK COUNTY, VIRGINIA

EXHIBIT  
 A-3  
 PHASE  
 FIVE