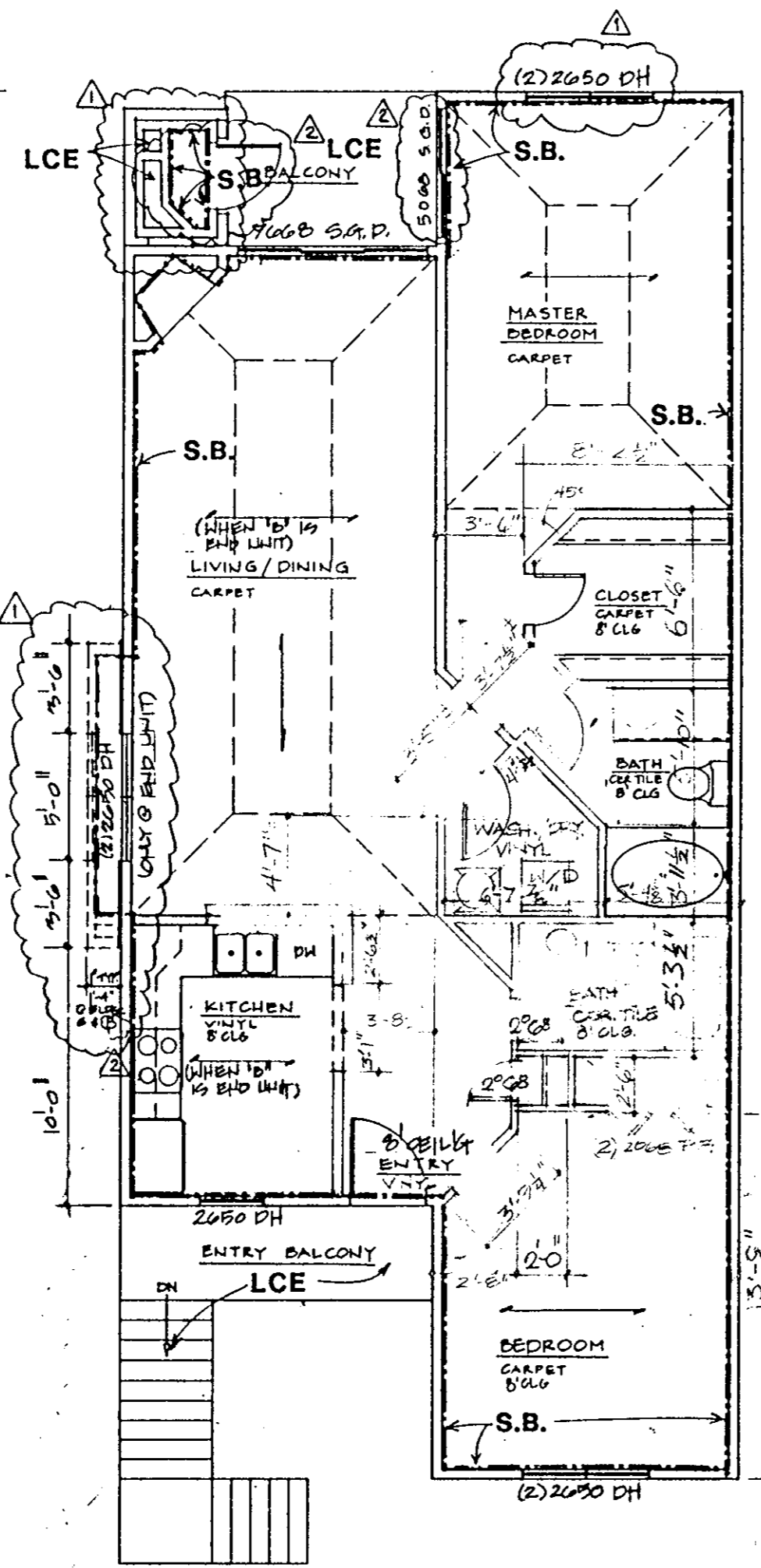
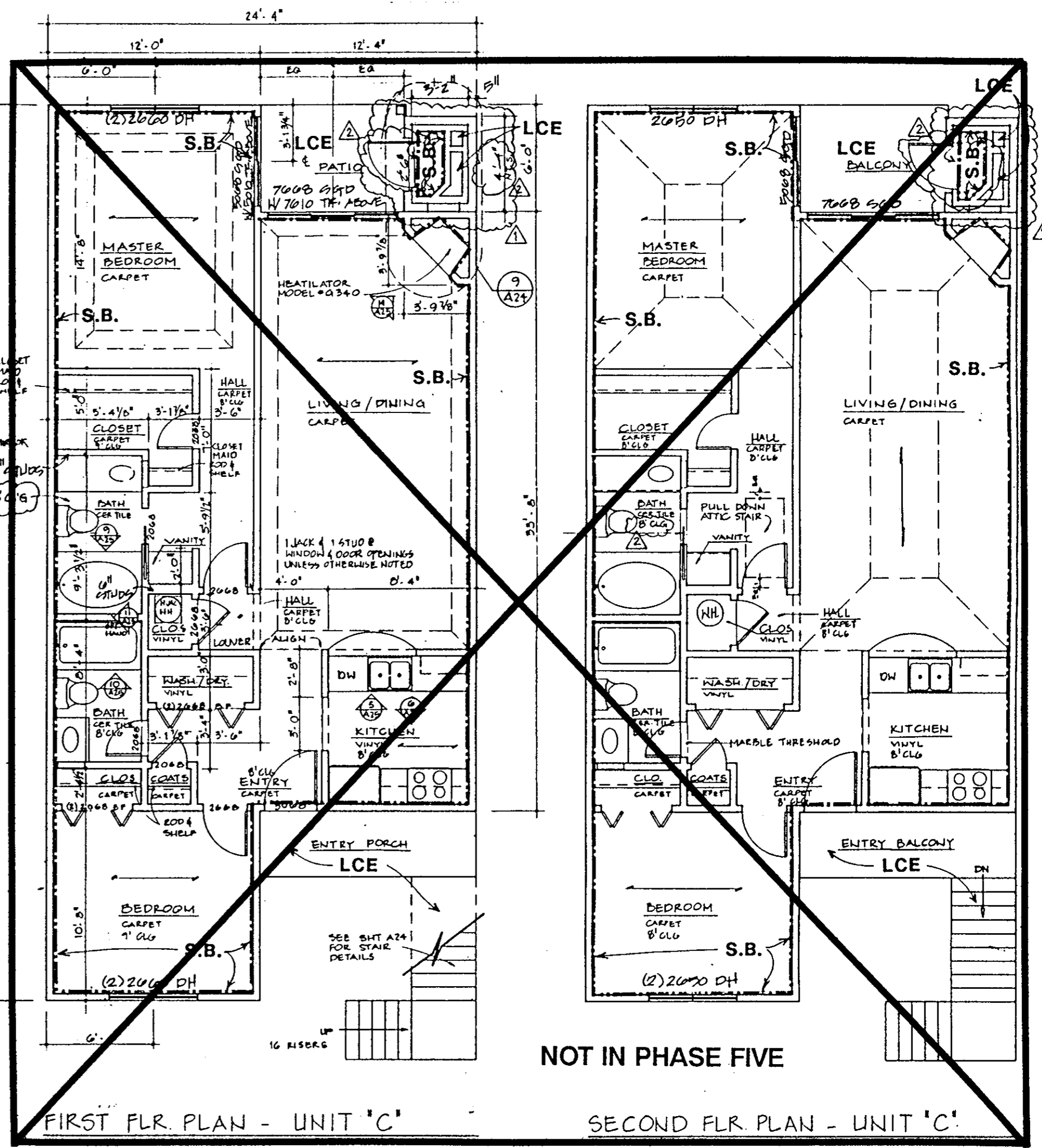


FIRST FLR. PLAN - UNIT 'E'-ALT.



SECOND FLR. PLAN - UNIT 'E'-ALT.



FIRST FLR. PLAN - UNIT 'C'

SECOND FLR. PLAN - UNIT 'C'

NOT IN PHASE FIVE

**LEGEND:**  
 S.B. - SIDE (PERIMETER) BOUNDARY  
 LCE - LIMITED COMMON ELEMENT  
 CE - COMMON ELEMENT

I hereby certify that this is a correct and accurate plan, that this plan is in compliance with Virginia Code Ann. Subsections 55-79.58 (b) and (e), and that the units depicted hereon have been substantially completed.  
 Hannah S. Remy, P.E.

Filed in the Clerk's Office, Circuit Court, York Co., Va.  
 the 22<sup>nd</sup> day of December 1994  
 Teste: Nancy B. Kane, Clerk  
 D.C.

NO	DATE	REVISIONS	BY
1	10/26/91	ADDENDA	

**WILLIAMS, TAZEWELL AND ASSOCIATES**  
 Architecture Engineering Planning Interiors  
 710 West 21st Street,  
 Norfolk, Virginia 23517

Plat of Condominium  
**EAGLE SOUND AT KILN CREEK**  
 YORK COUNTY, VIRGINIA

**EXHIBIT A-3**  
**PHASE FIVE**

File  
 Date  
 Sheet  
**5 OF 7**