

THIS IS NOT A SUBDIVISION PLAT.

P.B. 11, PG. 288

PLAT OF WATERMAIN EASEMENTS LOCATED IN THE VILLAGES OF KILN CREEK AVERY WOODS CORPORATE CENTER 7 COUNTY OF YORK, VIRGINIA ACROSS THE LANDS OF D & B VENTURE, L.C. TO BE CONVEYED TO THE CITY OF NEWPORT NEWS, VIRGINIA

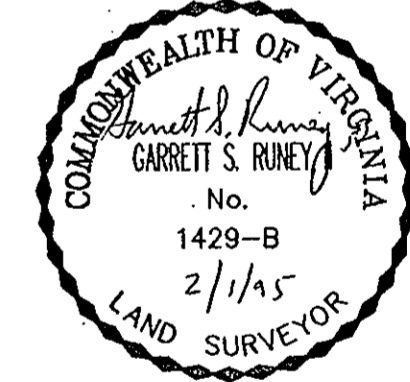
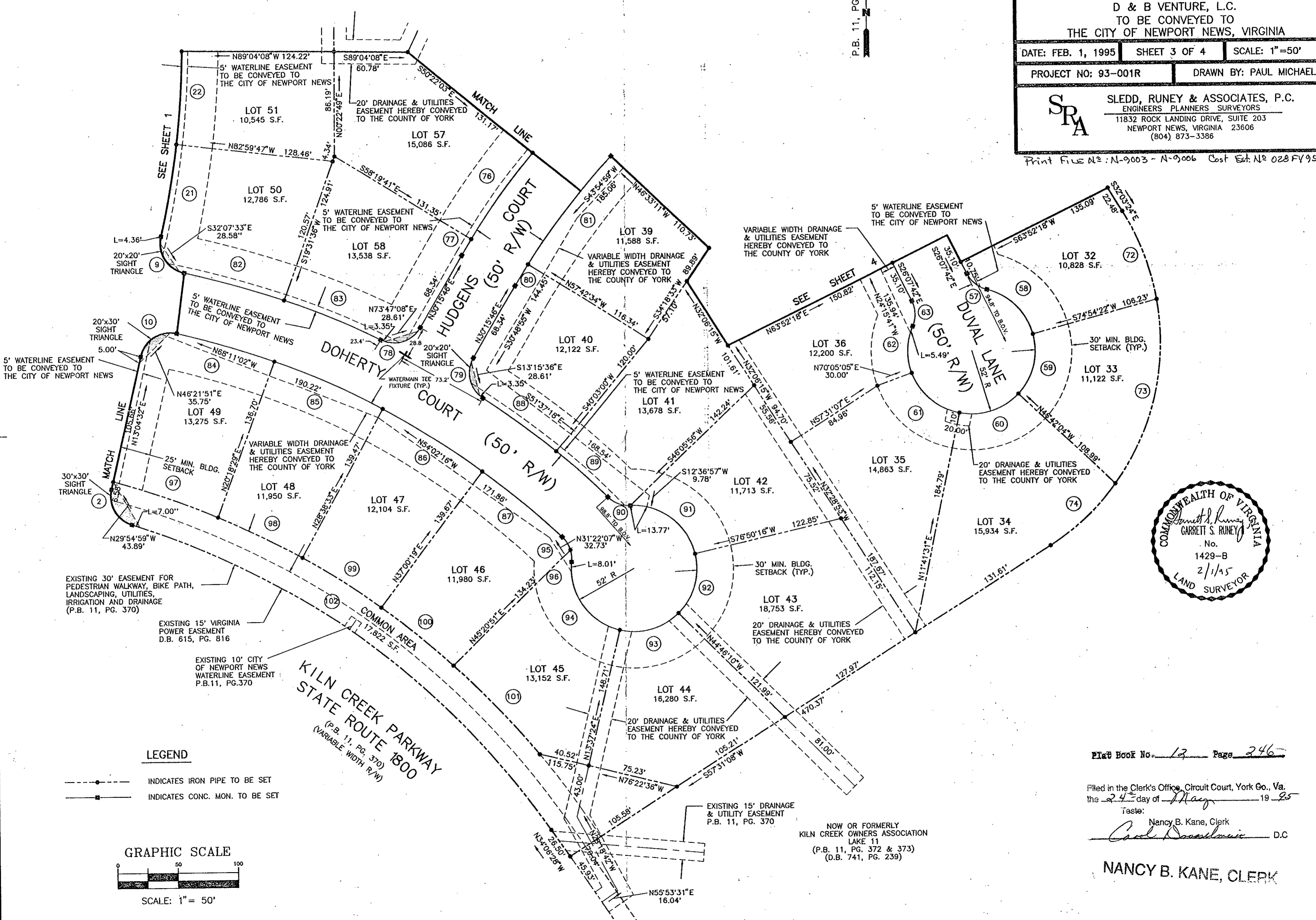
DATE: FEB. 1, 1995 SHEET 3 OF 4 SCALE: 1"=50'

PROJECT NO: 93-001R DRAWN BY: PAUL MICHAEL



SLEDD, RONEY & ASSOCIATES, P.C. ENGINEERS PLANNERS SURVEYORS 11832 ROCK LANDING DRIVE, SUITE 203 NEWPORT NEWS, VIRGINIA 23606 (804) 873-3386

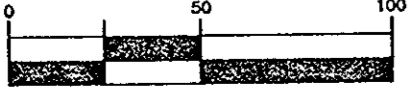
Print File No.: N-9003 - N-9006 Cost Est. No. 028 FY 95



LEGEND

- INDICATES IRON PIPE TO BE SET
INDICATES CONC. MON. TO BE SET

GRAPHIC SCALE



SCALE: 1" = 50'

Plat Book No. 13 Page 246

Filed in the Clerk's Office, Circuit Court, York Co., Va. the 24th day of May 19 95

Teste: Nancy B. Kane, Clerk

NANCY B. KANE, CLERK

NOW OR FORMERLY KILN CREEK OWNERS ASSOCIATION LAKE 11 (P.B. 11, PG. 372 & 373) (D.B. 741, PG. 239)