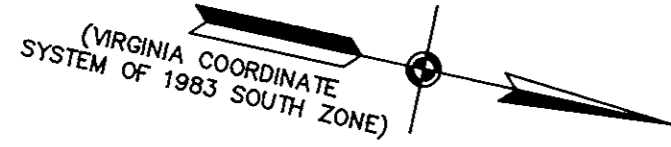
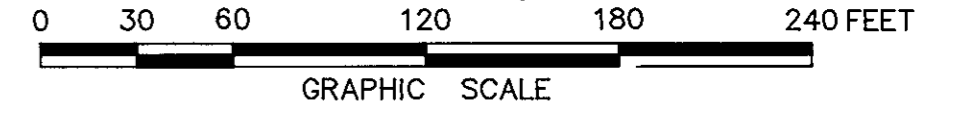


WYTHE CREEK FARMS
 (P.B.11, P.677)
SECTION ONE
 BETHEL DISTRICT - COUNTY OF YORK, VIRGINIA

THE SIRINE GROUP, LTD.
 SURVEYORS • ENGINEERS • PLANNERS
 P.O. BOX 450, ROUTE 17
 WHITE MARSH, VIRGINIA 23183

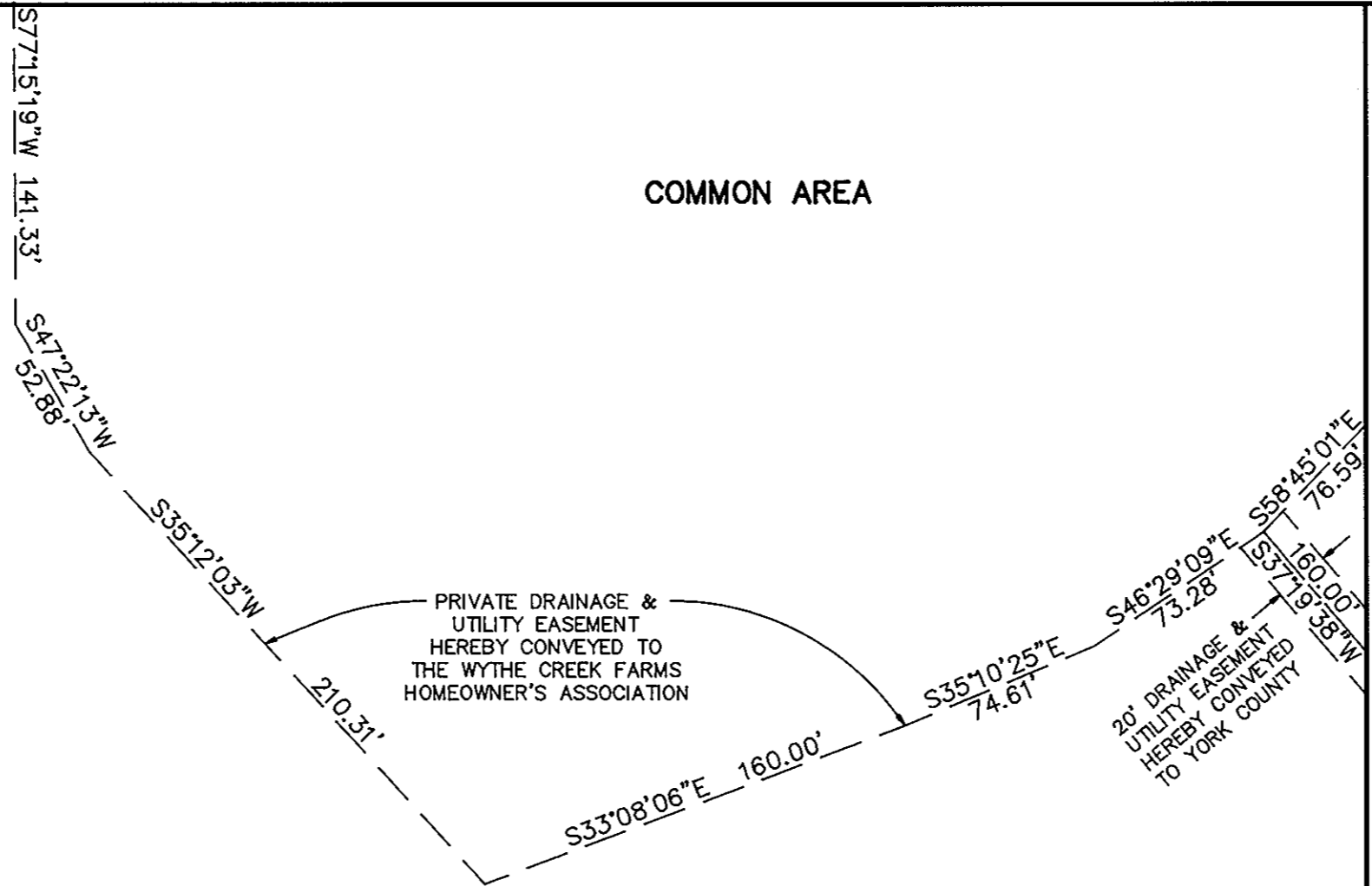
SCALE: 1" = 60' AUGUST 30, 1994

SHEET 7 OF 8



MATCH LINE SHEET 8

COMMON AREA



PRIVATE DRAINAGE &
 UTILITY EASEMENT
 HEREBY CONVEYED TO
 THE WYTHE CREEK FARMS
 HOMEOWNER'S ASSOCIATION

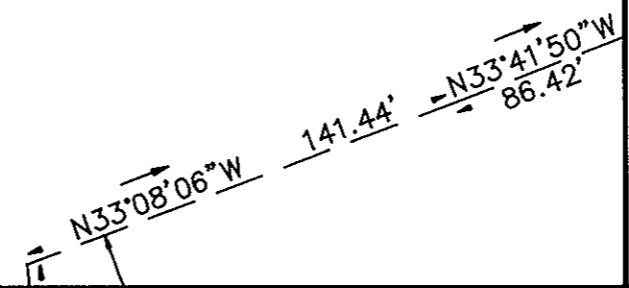
20' DRAINAGE &
 UTILITY EASEMENT
 HEREBY CONVEYED
 TO YORK COUNTY

NOW OR FORMERLY
RUNNING MAN
 LIMITED PARTNERSHIP
 (D.B.228, P.490)

S77°15'19\"/>

MATCH LINE SHEET 4

APPROVED:
 YORK COUNTY BOARD OF SUPERVISORS
 BY: John T. Dunn, PE
 PLAT APPROVING AGENT
 DATE: 8-14-95



MATCH LINE SHEET 5

STATE OF VIRGINIA
 COUNTY OF YORK
 IN THE CLERK'S OFFICE OF THE CIRCUIT COURT FOR
 THE COUNTY OF YORK THE 14th DAY OF August,
 1995, THIS PLAT WAS PRESENTED AND ADMITTED TO
 RECORD AS THE LAW DIRECTS IN PLAT BOOK 12,
 PAGE 281.

TESTE: Nancy B. Kane
 CLERK
 BY: Carol D. Rosselmeier, D.C.