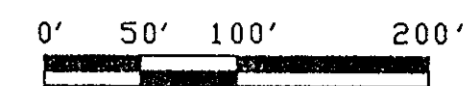


SUBDIVISION PLAT OF
THE WOODS OF TABB
SECTION SIX
COUNTY OF YORK, VIRGINIA

SCALE: 1" = 100' DATE: 7 SEPTEMBER 1995

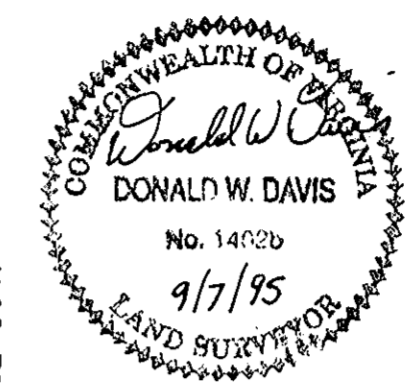


GRAPHIC SCALE

SHEET 2 OF 3

DAVIS & ASSOCIATES

SURVEYORS - PLANNERS
4033 GEORGE WASHINGTON
MEMORIAL HIGHWAY
YORKTOWN, VIRGINIA 23692



SYMBOLS

- DENOTES MINIMUM BUILDING SETBACK LINE
- DENOTES DRAINAGE EASEMENT HEREBY CONVEYED TO COUNTY OF YORK.
- DENOTES UTILITY EASEMENT HEREBY CONVEYED TO COUNTY OF YORK.
- DENOTES WATERLINE EASEMENT HEREBY CONVEYED TO NEWPORT NEWS WATERWORKS
- DENOTES IRON PIPE FOUND
- DENOTES IRON PIPES TO BE SET AT ALL PROPERTY LINE JUNCTURES
- DENOTES CONCRETE MONUMENTS FOUND
- DENOTES CONCRETE MONUMENTS TO BE SET

APPROVED

YORK COUNTY BOARD OF SUPERVISORS

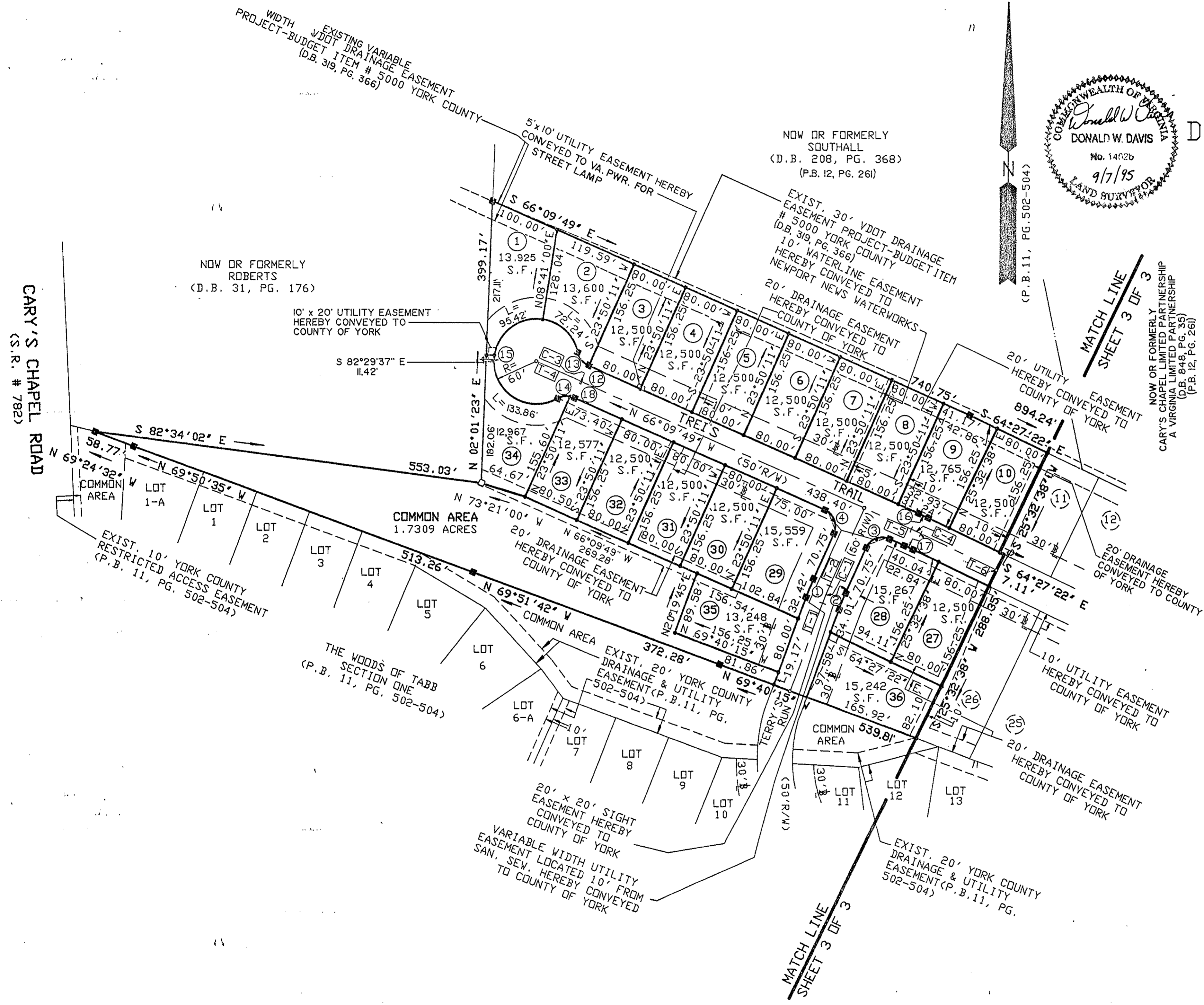
BY: John T. Munro, PE
PLAT APPROVING AGENT

DATE: 7-18-96

STATE OF VIRGINIA
COUNTY OF YORK
IN THE CLERK'S OFFICE OF THE CIRCUIT
COURT FOR THE COUNTY OF YORK THIS 19
DAY OF July 1996 THIS MAP WAS
PRESENTED AND ADMITTED TO RECORD AS
THE LAW DIRECTS IN PLAT BOOK 12
PAGE 389.

TESTE: NANCY B. KANE, CLERK
CLERK

BY: Imogen S. Berry



CARY'S CHAPEL ROAD
(S.R. # 782)

NOW OR FORMERLY
ROBERTS
(D.B. 31, PG. 176)

NOW OR FORMERLY
SQUHALL
(D.B. 208, PG. 368)
(P.B. 12, PG. 261)

(P.B. 11, PG. 502-504)

NOW OR FORMERLY
CARY'S CHAPEL LIMITED PARTNERSHIP
A VIRGINIA LIMITED PARTNERSHIP
(D.B. 848, PG. 35)
(P.B. 12, PG. 261)

EXISTING VARIABLE
WIDTH VDOT DRAINAGE EASEMENT
PROJECT-BUDGET ITEM # 5000 YORK COUNTY
(D.B. 319, PG. 366)

5' x 10' UTILITY EASEMENT HEREBY
CONVEYED TO VA. PWR. FOR
STREET LAMP

EXIST. 30' VDOT DRAINAGE
EASEMENT PROJECT-BUDGET ITEM
5000 YORK COUNTY
(D.B. 319, PG. 366)
10' WATERLINE EASEMENT
HEREBY CONVEYED TO
NEWPORT NEWS WATERWORKS

DRAINAGE EASEMENT
HEREBY CONVEYED TO
COUNTY OF YORK

20' UTILITY EASEMENT
HEREBY CONVEYED TO
COUNTY OF YORK

10' x 20' UTILITY EASEMENT
HEREBY CONVEYED TO
COUNTY OF YORK

S 82°29'37" E
11.42'

S 82°34'02" E

COMMON AREA
1.7309 ACRES

EXIST. 10' YORK COUNTY
RESTRICTED ACCESS EASEMENT
(P.B. 11, PG. 502-504)

THE WOODS OF TABB
SECTION ONE
(P.B. 11, PG. 502-504)

EXIST. 20' YORK COUNTY
DRAINAGE & UTILITY
EASEMENT (P.B. 11, PG.
502-504)

20' x 20' SIGHT
EASEMENT HEREBY
CONVEYED TO
COUNTY OF YORK

VARIABLE WIDTH UTILITY
EASEMENT LOCATED 10' FROM
SAN. SEV. HEREBY CONVEYED
TO COUNTY OF YORK

EXIST. 20' YORK COUNTY
DRAINAGE & UTILITY
EASEMENT (P.B. 11, PG.
502-504)

MATCH LINE
SHEET 3 OF 3

MATCH LINE
SHEET 3 OF 3