

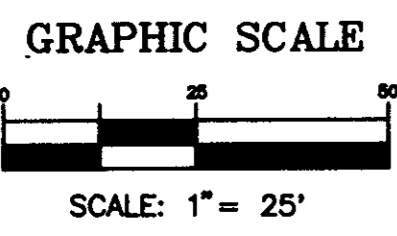
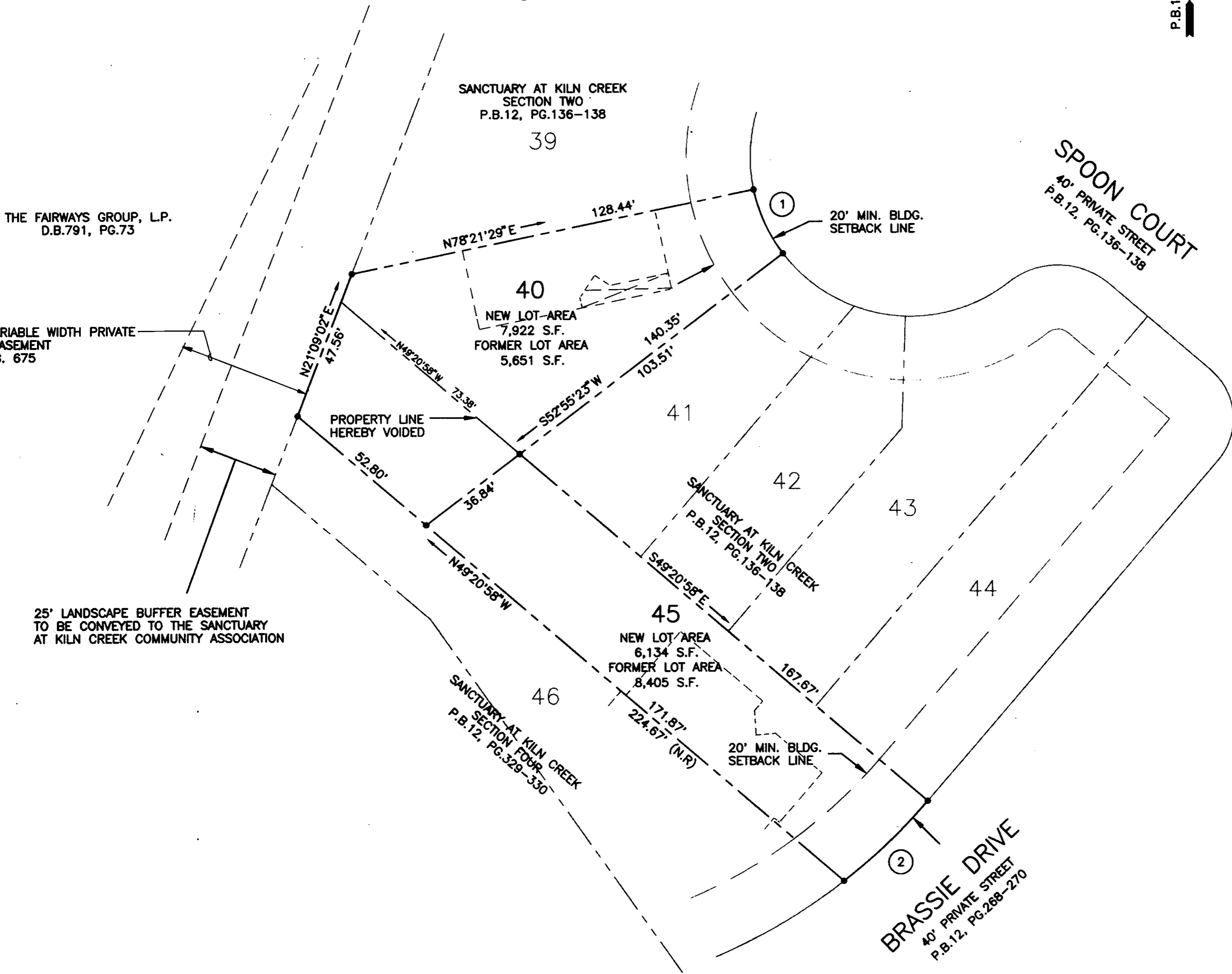
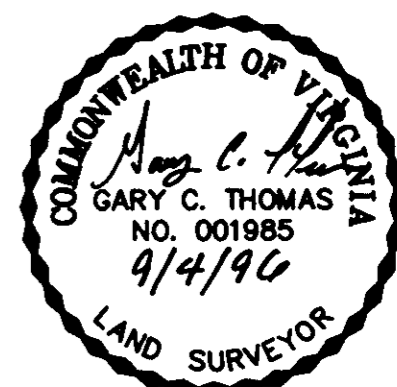
CURVE DATA

CURVE	DELTA	RADIUS	LENGTH	TANGENT	CHORD	BEARING
1	25°26'07"	50.00'	22.20'	11.28'	22.01'	S24°21'34" E
2	11°32'13"	180.00'	36.24'	18.18'	36.18'	S46°25'09" W

P.B.11, PG.407

DATE: 7/11/96 SHEET 2 OF 2 SCALE: 1"=25'
PROJECT NO: 93-012 DRAWN BY: PAUL MICHAEL

SA SLEDD & ASSOCIATES, P.C.
ENGINEERS PLANNERS SURVEYORS
11832 ROCK LANDING DRIVE, SUITE 203
NEWPORT NEWS, VIRGINIA 23606
(804) 873-3386



LEGEND
—●— INDICATES IRON PIN TO BE SET

APPROVED:
YORK COUNTY BOARD OF SUPERVISORS
BY: *Al Maddalena*
PLAT APPROVING AGENT
DATE: 9/19/96

STATE OF VIRGINIA
COUNTY OF YORK

IN THE CLERK'S OFFICE OF THE CIRCUIT COURT FOR THE COUNTY OF YORK, THE 19 DAY OF Sept., 1996. THIS MAP WAS PRESENTED AND ADMITTED TO RECORD AS THE LAW DIRECTS IN PLAT BOOK 12, PAGE 407.

TESTE: *Nancy B. Kane*
CLERK

BY: *Carol D. ... Deputy Clerk*
RESUB LOTS 40 & 45 SANCTUARY 93-012