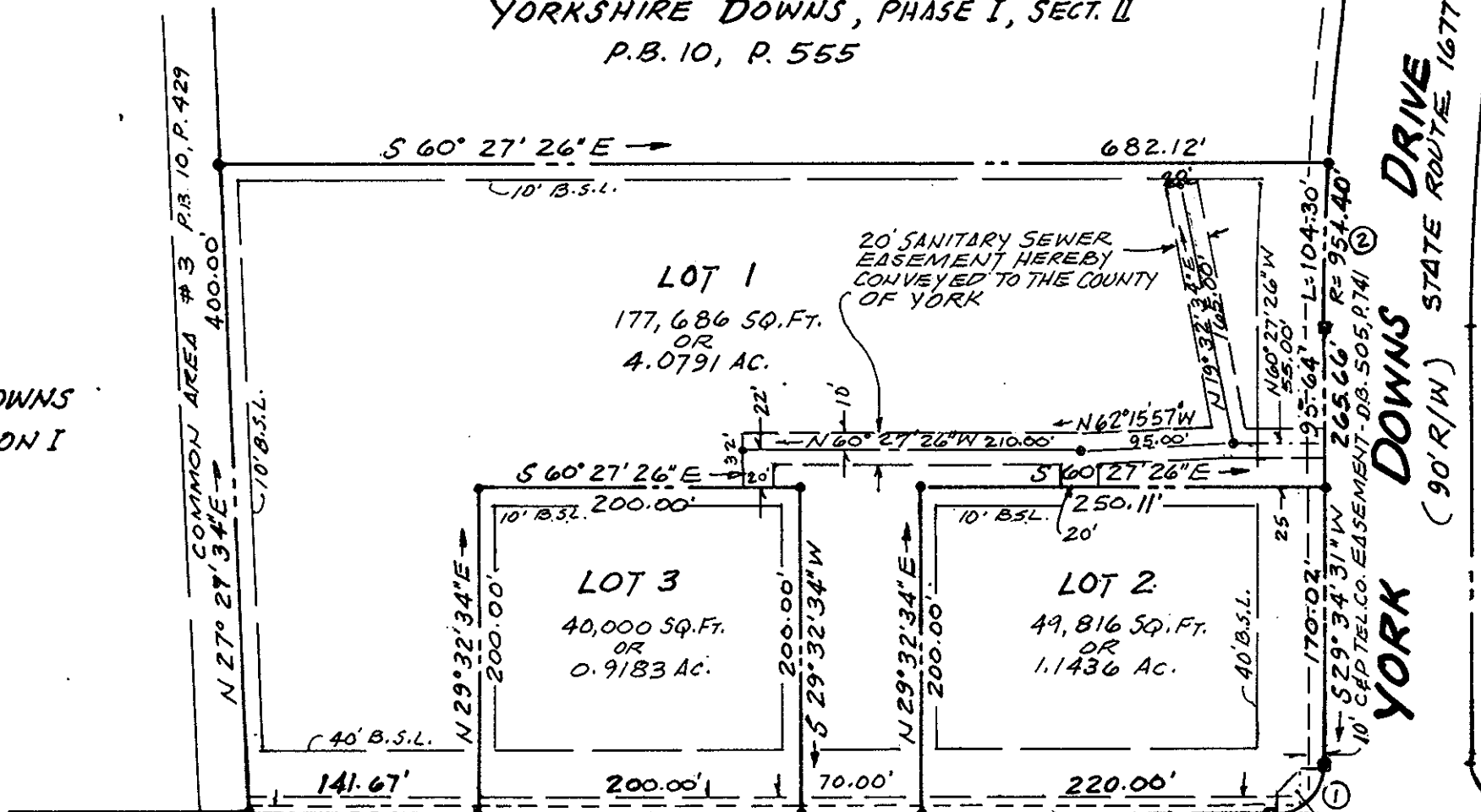


NOTARY PUBLIC
 MY COMMISSION EXPIRES 9/30/97

RESUBDIVISION OF PARCEL 2
 YORKSHIRE DOWNS, PHASE I, SECT. II
 P.B. 10, P. 555

PRIM



STA. 126 - A 3'
 GROUND
 LOCATION
 OF ROAD
 OF THE
 PAVED
 COORDINATE
 3567.

STA. 127 - A 3 1/4'
 GROUND
 LOCATION
 OF THE
 (CHAMPION)
 COORDINATE
 3565.

HAMPTON HWY. STATE ROUTE NO. 134

(168' R/W)

SIGN EASEMENT D.B. 526, P. 4
 10' DRAINAGE AND MAINTENANCE EASEMENT
 THE FRONTAGE OF ROUTE NO. 134 HEREBY
 DEDICATED TO THE VIRGINIA DEPT. OF TRANSPORTATION

10' RESTRICTED ACCESS EASEMENT ALONG THE
 FRONTAGE OF LOTS 2 & 3 HEREBY CONVEYED
 TO THE COUNTY OF YORK.

5' C&P TEL. CO. EASEMENT
 D.B. 244, P. 342

10' VEPCO EASEMENT
 D.B. 56, P. 119

20' SANITARY SEWER
 EASEMENT HEREBY
 CONVEYED TO THE COUNTY
 OF YORK