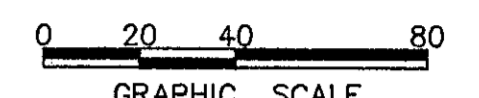
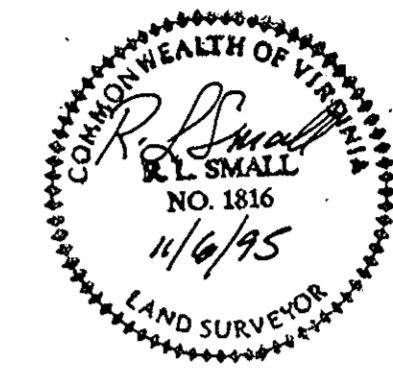


# CALLAHAN VILLAGE DUPLEXES

COUNTY OF YORK, VIRGINIA

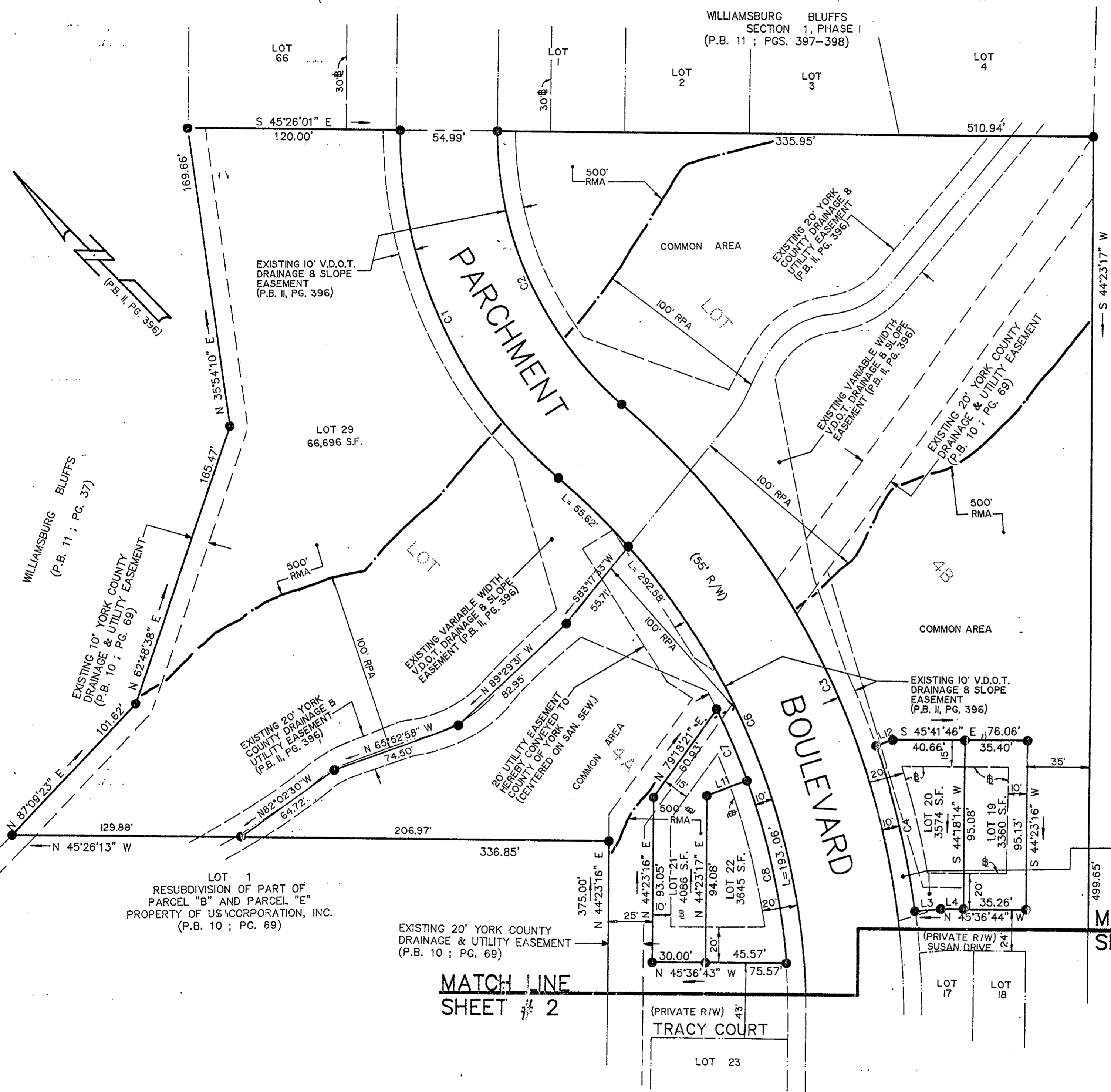
SCALE : 1" = 40' DATE : 6 NOV. 1995



GRAPHIC SCALE  
SHEET 3 OF 3  
**DAVIS & ASSOCIATES**  
SURVEYORS - PLANNERS  
4033 GEO. WASH. MEM. HWY.  
YORKTOWN, VIRGINIA 23692  
(804) 898-9414

### - SYMBOLS -

- DENOTES IRON ROD SET
- DENOTES IRON ROD FOUND
- DENOTES PIPE FOUND
- DENOTES MINIMUM BUILDING SETBACK LINE
- DENOTES DRAINAGE AND / OR UTILITIES EASEMENT HEREBY CONVEYED TO COUNTY OF YORK



NOW OR FORMERLY COUNTRY CLUB PARTNERS (P.B. 9 ; PG. 571)

VARIABLE WIDTH UTILITY EASEMENT HEREBY CONVEYED TO COUNTY OF YORK

**APPROVED**

YORK COUNTY BOARD OF SUPERVISORS

BY : PLAT APPROVING AGENT

DATE : 3-3-97

MATCH LINE SHEET # 2

MATCH LINE SHEET # 2

STATE OF VIRGINIA  
COUNTY OF YORK  
IN THE CLERK'S OFFICE OF THE CIRCUIT COURT FOR THE COUNTY OF YORK THE 3rd DAY OF March, 1997 THIS MAP WAS PRESENTED AND ADMITTED TO RECORD AS THE LAW DIRECTS IN PLAT BOOK 12 PAGE 440.

TESTE : Nancy B. Kane, Clerk  
CLERK  
BY : Dwight S. Hughes D.C.