

THE GABLES OF YORK COUNTY

SECTION ONE

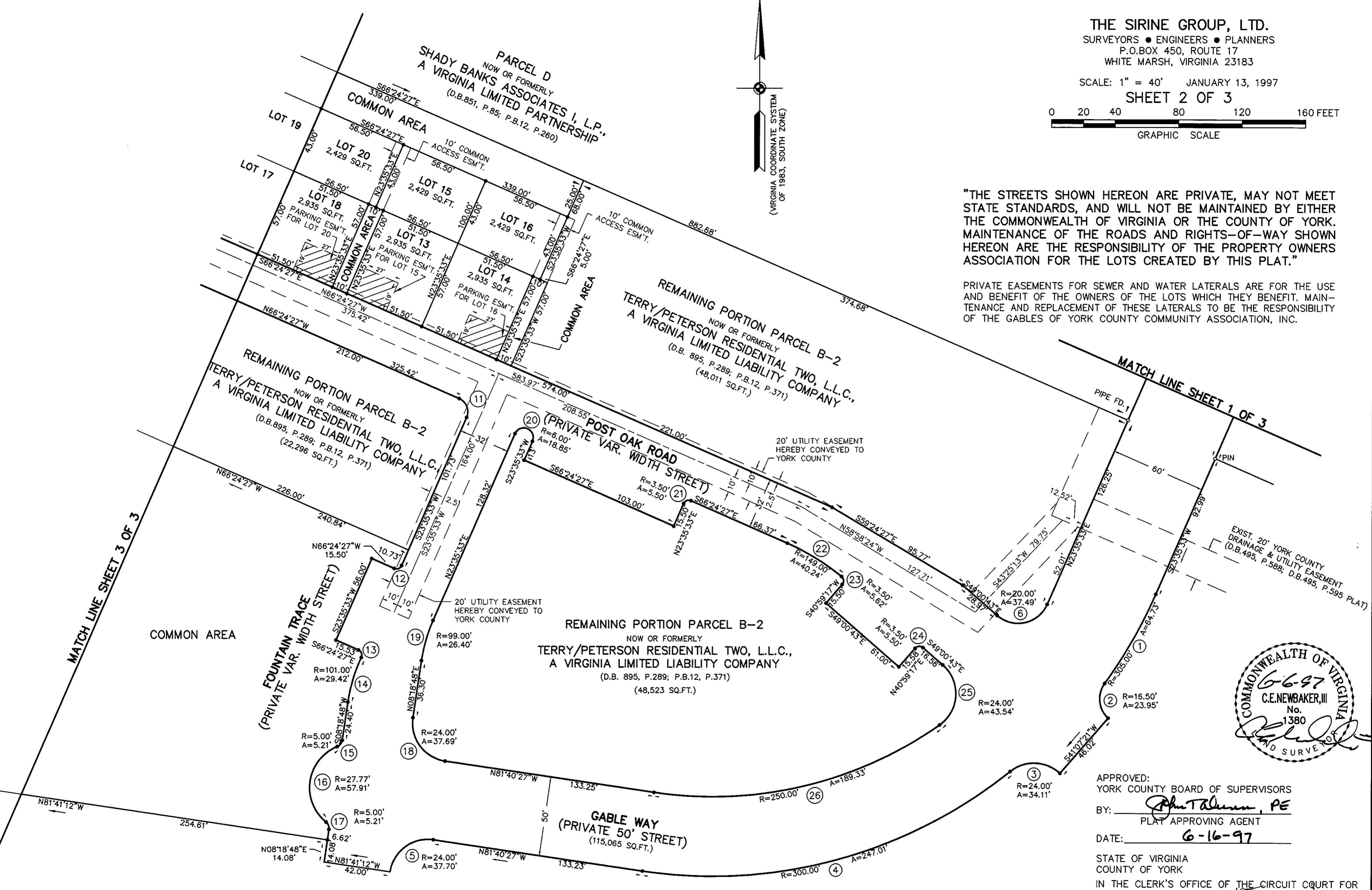
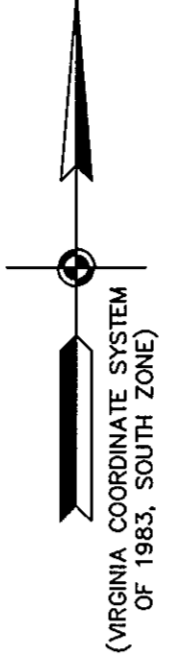
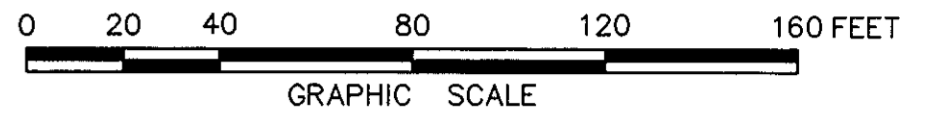
BETHEL DISTRICT - COUNTY OF YORK, VIRGINIA

THE SIRINE GROUP, LTD.

SURVEYORS • ENGINEERS • PLANNERS
P.O. BOX 450, ROUTE 17
WHITE MARSH, VIRGINIA 23183

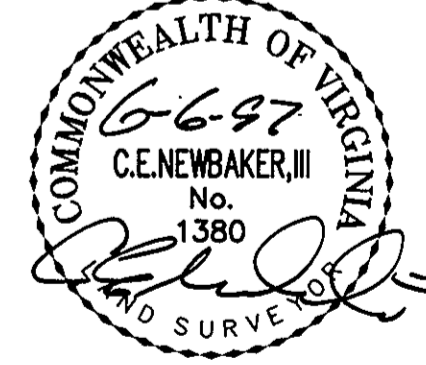
SCALE: 1" = 40' JANUARY 13, 1997

SHEET 2 OF 3



"THE STREETS SHOWN HEREON ARE PRIVATE, MAY NOT MEET STATE STANDARDS, AND WILL NOT BE MAINTAINED BY EITHER THE COMMONWEALTH OF VIRGINIA OR THE COUNTY OF YORK. MAINTENANCE OF THE ROADS AND RIGHTS-OF-WAY SHOWN HEREON ARE THE RESPONSIBILITY OF THE PROPERTY OWNERS ASSOCIATION FOR THE LOTS CREATED BY THIS PLAT."

PRIVATE EASEMENTS FOR SEWER AND WATER LATERALS ARE FOR THE USE AND BENEFIT OF THE OWNERS OF THE LOTS WHICH THEY BENEFIT. MAINTENANCE AND REPLACEMENT OF THESE LATERALS TO BE THE RESPONSIBILITY OF THE GABLES OF YORK COUNTY COMMUNITY ASSOCIATION, INC.



APPROVED: YORK COUNTY BOARD OF SUPERVISORS

BY: *Phyllis Talman, PE*
PLAT APPROVING AGENT

DATE: 6-16-97

STATE OF VIRGINIA
COUNTY OF YORK
IN THE CLERK'S OFFICE OF THE CIRCUIT COURT FOR THE COUNTY OF YORK THE 17th DAY OF June, 1997, THIS PLAT WAS PRESENTED AND ADMITTED TO RECORD AS THE LAW DIRECTS IN PLAT BOOK 12, PAGE 481.

TESTE: *Nancy B. Kane* CLERK

BY: *Imogene S. Berry*