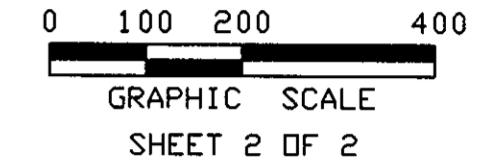


DAVID E. & ALICE B. AMORY
AND
BETTY A. & ROLAND R. ROLLINS
AND
PEGGY A. & DAVID C. HOLMES

NELSON MAGISTERIAL DISTRICT
COUNTY OF YORK, VIRGINIA

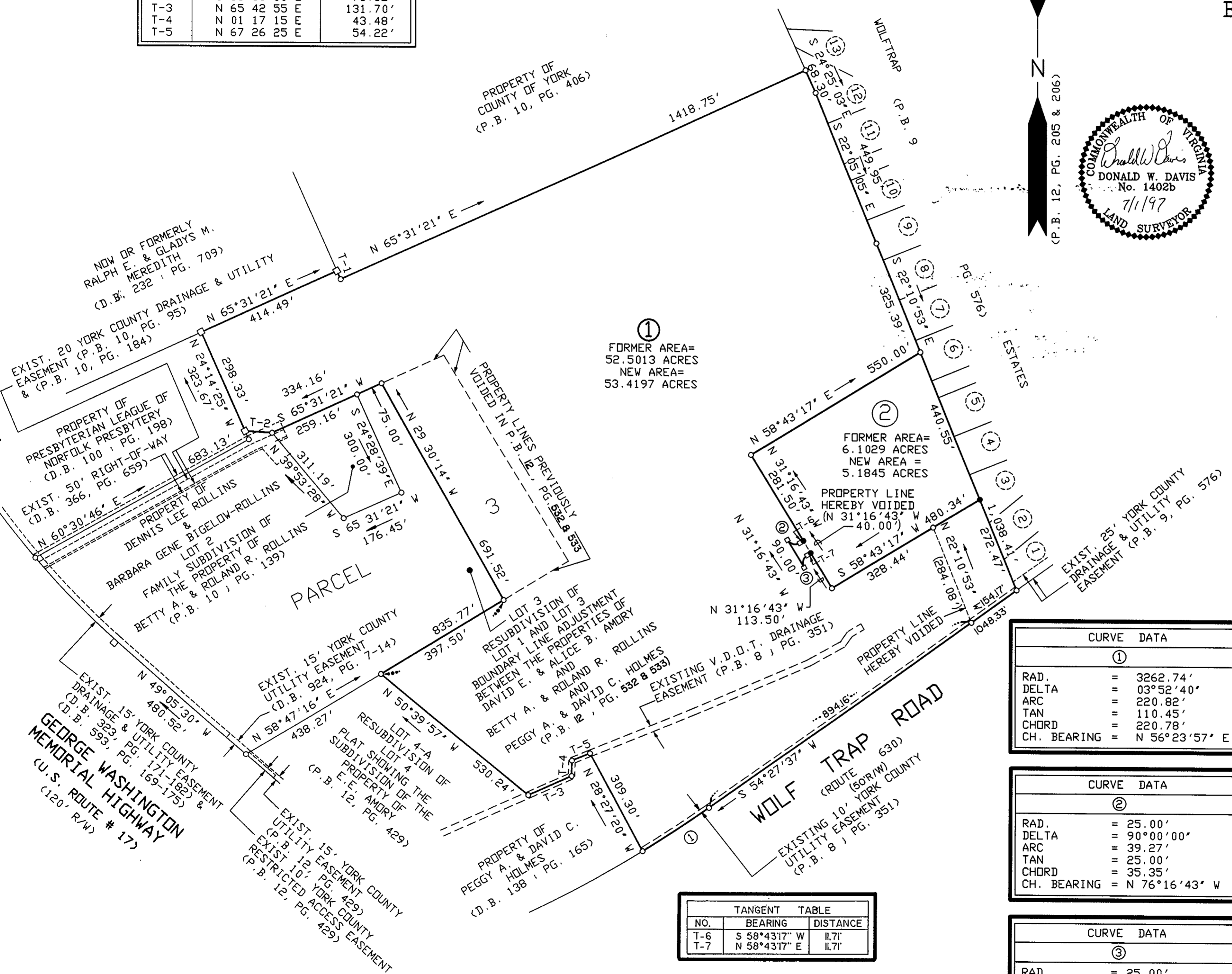
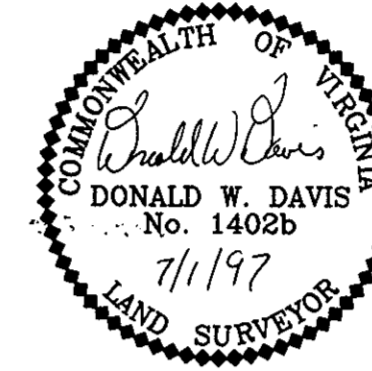
SCALE: 1" = 200' DATE: 1 JULY 1997



DAVIS & ASSOCIATES, P.C.
SURVEYORS - PLANNERS
3630 GEORGE WASHINGTON
MEMORIAL HIGHWAY - SUITE 'G'
YORKTOWN, VIRGINIA 23693
(757) 867-8583

LOT 1 | 53.4197 ACRES
LOT 2 | 5.1845 ACRES
TOTAL RESUBDIVIDED AREA | 58.6042 ACRES

TANGENT TABLE		
NO.	BEARING	DISTANCE
T-1	S 24 04 02 W	25.00'
T-2	S 86 35 53 E	75.52'
T-3	N 65 42 55 E	131.70'
T-4	N 01 17 15 E	43.48'
T-5	N 67 26 25 E	54.22'



①
FORMER AREA= 52.5013 ACRES
NEW AREA= 53.4197 ACRES

②
FORMER AREA= 6.1029 ACRES
NEW AREA= 5.1845 ACRES

TANGENT TABLE		
NO.	BEARING	DISTANCE
T-6	S 58°43'17" W	11.71'
T-7	N 58°43'17" E	11.71'

CURVE DATA	
①	
RAD.	= 3262.74'
DELTA	= 03°52'40"
ARC	= 220.82'
TAN	= 110.45'
CHORD	= 220.78'
CH. BEARING	= N 56°23'57" E

CURVE DATA	
②	
RAD.	= 25.00'
DELTA	= 90°00'00"
ARC	= 39.27'
TAN	= 25.00'
CHORD	= 35.35'
CH. BEARING	= N 76°16'43" W

CURVE DATA	
③	
RAD.	= 25.00'
DELTA	= 90°00'00"
ARC	= 39.27'
TAN	= 25.00'
CHORD	= 35.35'
CH. BEARING	= N 13°43'17" E

APPROVED

YORK COUNTY BOARD OF SUPERVISORS

BY: *John T. Hanna, PE*
PLAT APPROVING AGENT

DATE: 11-24-97

STATE OF VIRGINIA
COUNTY OF YORK
IN THE CLERK'S OFFICE OF THE CIRCUIT
COURT FOR THE COUNTY OF YORK THE 25th
DAY OF Nov 1997, THIS MAP WAS
PRESENTED AND ADMITTED TO RECORD AS
THE LAW DIRECTS IN PLAT BOOK 12,
PAGE 540.

TESTE: *Nancy B. Kane*
CLERK
BY: *Ronde B. Hughes D.C.*