

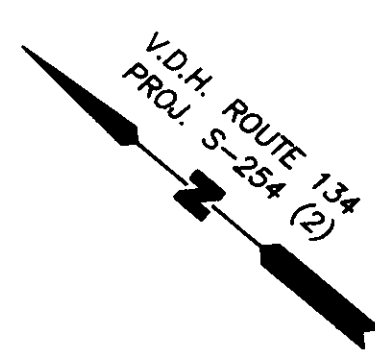
SUBDIVISION OF THE
 PROPERTY OF
GEORGE L. SMITH, JR.
 PARCEL CONTAINING 27.173 ACRES
 BETHEL DISTRICT
 COUNTY OF YORK, VIRGINIA

DATE: 9/17/97 SHEET 2 OF 2 SCALE: 1"=100'
 PROJECT NO: 96-022 DRAWN BY: PAUL MICHAEL

SA **SLEDD & ASSOCIATES, P.C.**
 ENGINEERS PLANNERS SURVEYORS
 11832 ROCK LANDING DRIVE, SUITE 203
 NEWPORT NEWS, VIRGINIA 23606
 (757) 873-3386

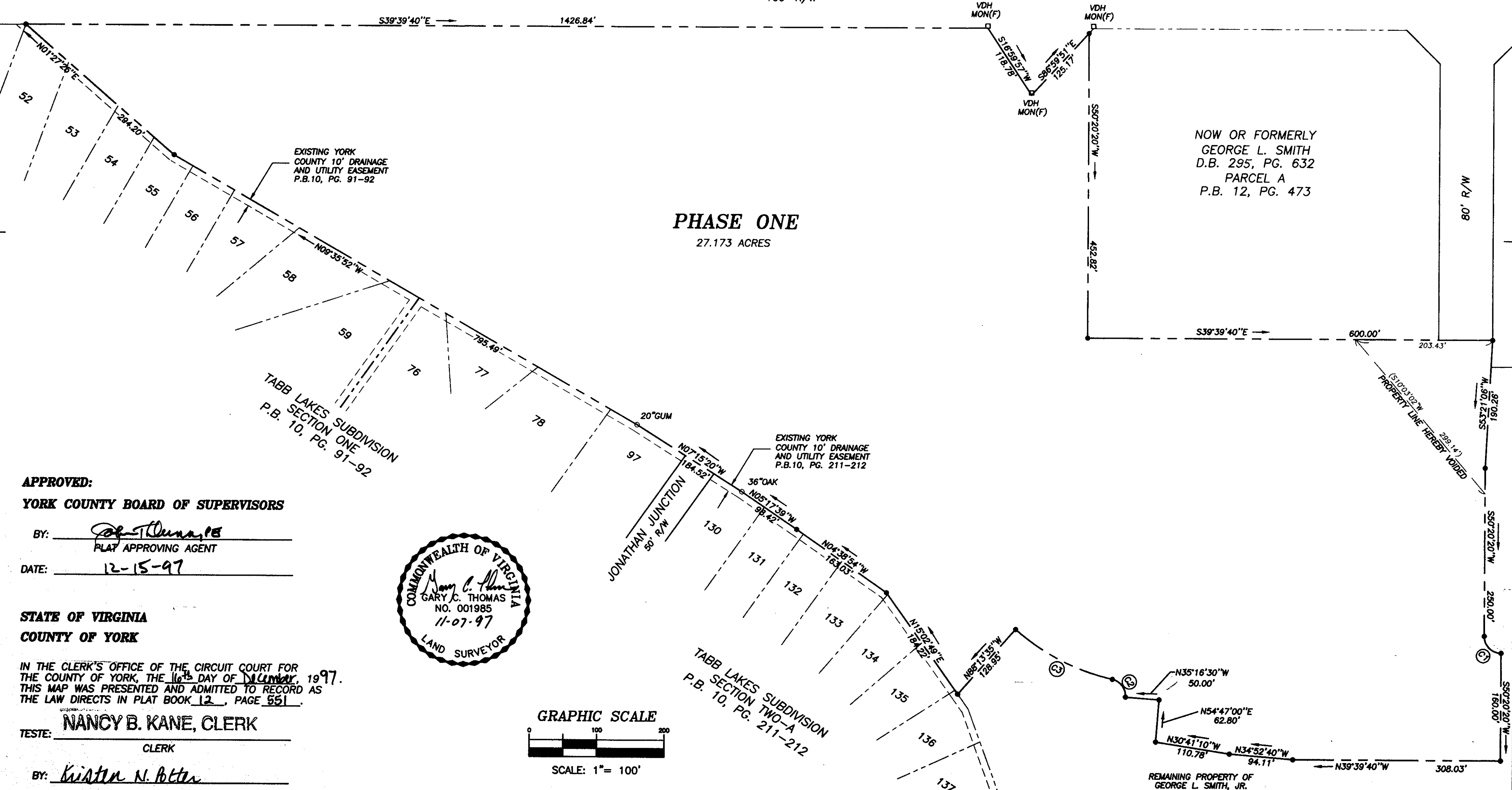
CURVE DATA

NUMBER	RADIUS	DELTA	ARC	TANGENT	CHORD	CHORD BEARING
C1	25.00	90°00'00"	39.27	25.00	35.36	S05°20'20"W
C2	25.00	81°47'12"	35.69	21.65	32.73	N13°53'23"E
C3	325.00	28°46'38"	163.23	83.38	161.52	N12°36'54"W



HAMPTON HIGHWAY - STATE ROUTE 134

160' R/W



APPROVED:
 YORK COUNTY BOARD OF SUPERVISORS

BY: [Signature]
 PLAT APPROVING AGENT
 DATE: 12-15-97

STATE OF VIRGINIA
 COUNTY OF YORK

IN THE CLERK'S OFFICE OF THE CIRCUIT COURT FOR
 THE COUNTY OF YORK, THE 16th DAY OF December, 1997.
 THIS MAP WAS PRESENTED AND ADMITTED TO RECORD AS
 THE LAW DIRECTS IN PLAT BOOK 12, PAGE 551.

TESTE: NANCY B. KANE, CLERK
 CLERK

BY: Kristen N. Betts

