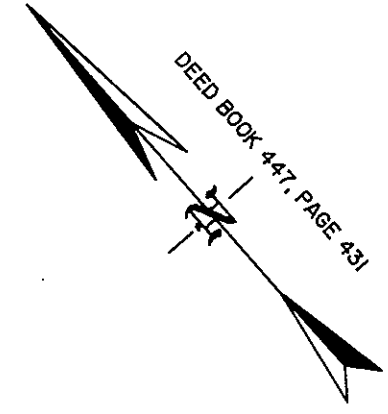
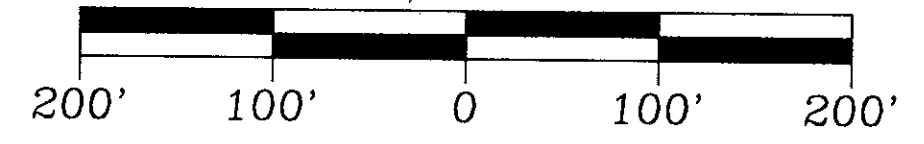


VICINITY MAP 1" = 2640'

Filed in the Clerk's Office, Circuit Court, York Co., Va.
 the 17 day of Nov 1998
 Teste:
 Nancy B. Kane, Clerk
Arnette Messers
 Deed Book No. 12 Page 644

PLAT OF RIGHT-OF-WAY DEDICATION
 FROM: STANLEY B. TRELEAVEN
 AND WILLIAM A. SHARMAN
 T/A T & S ASSOCIATES, INC.
 TO: THE COMMONWEALTH OF VIRGINIA
 LOCATED: BRUTON MAGISTERIAL DISTRICT
 COUNTY OF YORK, VIRGINIA
 DATE: JULY 3, 1995 SCALE: 1" = 100'

REVISED: FEBRUARY 5, 1996
 REVISED: OCTOBER 7, 1996



N/F
 CHEATHAM ANNEX
 PB. 4, PG. 5
 DB. 60, PG. 213
 LANTDOCKS DWG. #63058

N/F
 CHEATHAM ANNEX
 PB. 4, PG. 5
 DB. 60, PG. 213
 LANTDOCKS DWG. #63058

N/F
 CHEATHAM ANNEX
 PB. 4, PG. 5
 DB. 60, PG. 213
 LANTDOCKS DWG. #63058

N/F
 CECIL C. & MARY L. STEELE
 DE. 209, PG. 187
 TAX MAP # 11-103

N/F
 VIRGINIA TRUSSES INC.
 LOT 2
 TAX MAP # 11-18-2
 PB. 12, PG. 180
 DB. 329, PG. 74

N/F
 T&S ASSOCIATES, INC.
 LOT 1
 TAX MAP # 11-18-1
 PB. 12, PG. 180
 DB. 447, PG. 431
 AREA FORMERLY = 15.70 AC. ±
 AREA NOW = 15.58 AC. ±

15' STRIP HEREBY DEDICATED
 TO THE COMMONWEALTH OF
 VIRGINIA, DEPARTMENT OF
 TRANSPORTATION, FOR
 RIGHT-OF-WAY PURPOSES

N/F
 JESSIE BULE, ETUX
 DB. 52, PG. 128
 TAX MAP #11-99

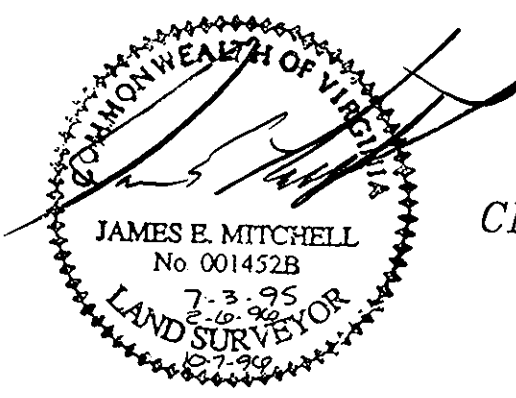
EXISTING PRIVATE
 25' INGRESS-EGRESS EASEMENT
 FOR LOT 2 (P.B. 12, PG. 180)

EXISTING PRIVATE
 25' INGRESS-EGRESS EASEMENT
 FOR LOT 2 (P.B. 12, PG. 180)

N/F
 JOHN A. JONES
 DB. 251, PG. 406-408
 TAX MAP #11-100

CURVE DATA

NO.	RADIUS	DELTA	TANGENT	ARC	CHORD	CH BEARING
C1	1504.54'	13°33'34"	178.87'	356.08'	355.23'	S 35°45'48" W
C2	1519.54'	13°28'38"	179.10'	356.56'	355.73'	N 35°53'16" E
C3	1519.54'	02°16'44"	30.22'	60.44'	60.44'	S 32°02'17" W
C4	893.00'	02°47'03"	24.13'	48.25'	48.24'	N 49°51'43" W
C5	130.38'	45°03'20"	54.07'	102.51'	99.89'	N 13°25'01" W
C6	173.98'	31°31'50"	49.12'	95.74'	94.54'	N 16°38'14" W
C7	153.98'	31°18'48"	43.18'	84.16'	83.11'	S 16°29'44" E
C8	150.38'	33°21'44"	45.08'	87.55'	86.32'	S 19°00'37" E
C9	973.00'	02°47'03"	23.85'	47.28'	47.28'	S 41°31'10" E



MITCHELL-WILSON ASSOCIATES, P.C.
 CIVIL ENGINEERS AND LAND SURVEYORS
 P.O. BOX 1269
 720 MAIN STREET, SUITE 112, 2ND FLOOR
 WEST POINT, VIRGINIA 23181
 (804)843-9744

YORK COUNTY
 APPROVED FOR DEDICATION
 BY: *John A. Jones*, PS
 Director, Env. & Devel. Svcs.
 DATE: November 10, 1998