

LINE DATA TABLE

NUMBER	DIRECTION	DISTANCE
L1	N04°58'28"W	20.00'
L2	N85°01'32"E	137.88'

SUBDIVISION OF THE PROPERTIES
OF
GRAFTON, L.L.C.
AND
C. LEAR PONTON
GRAFTON MAGISTERIAL DISTRICT
COUNTY OF YORK, VIRGINIA

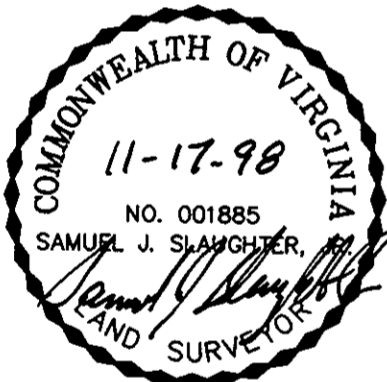
DATE: 6/12/98 SHEET 2 OF 2 SCALE: 1"=50'

PROJECT NO: 97-019 DRAWN BY: CADD

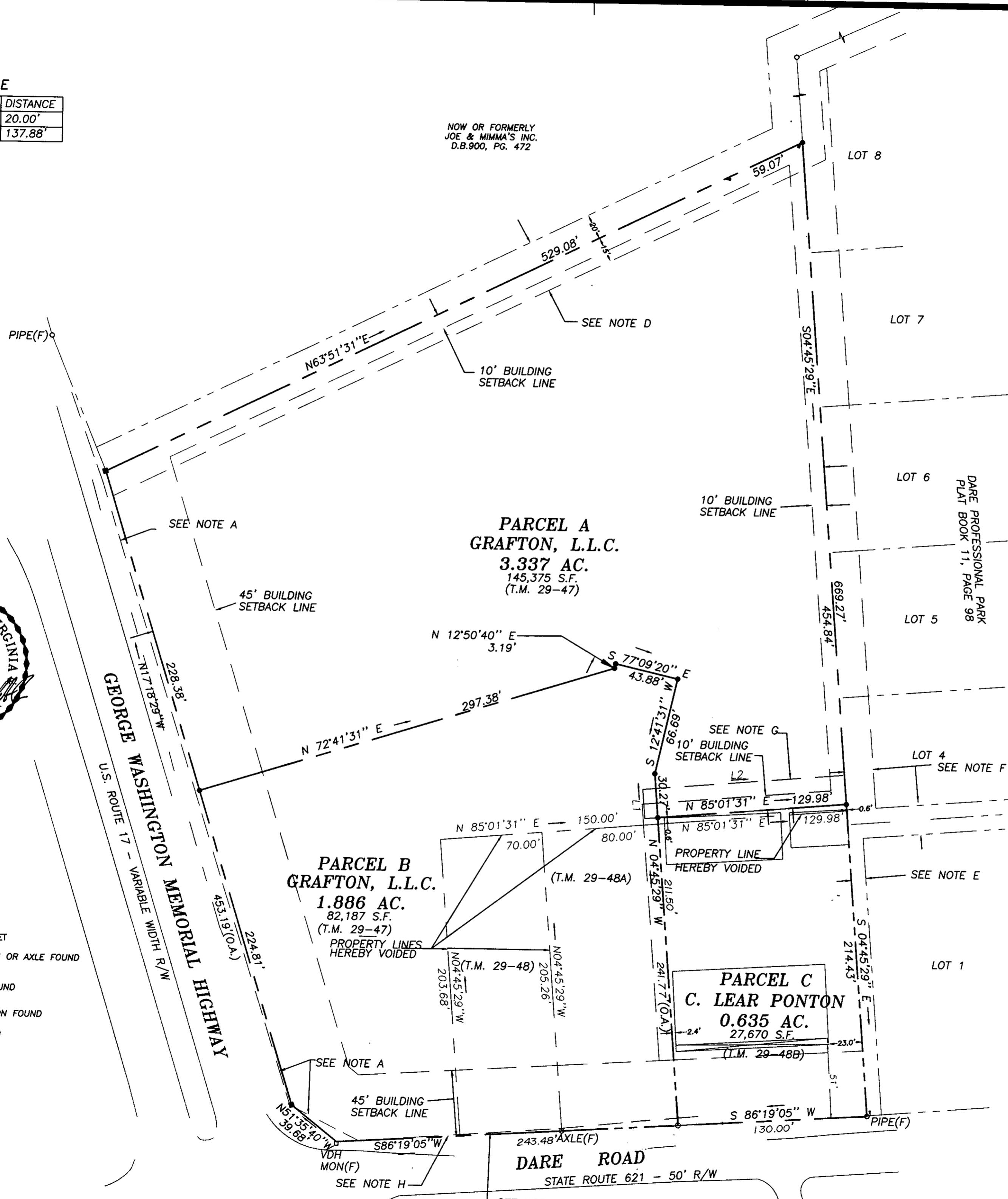
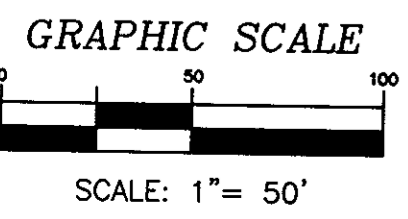
SA SLEDD & ASSOCIATES, P.C.
ENGINEERS PLANNERS SURVEYORS
11832 ROCK LANDING DRIVE, SUITE 203
NEWPORT NEWS, VIRGINIA 23606
(757) 873-3386

- A: CENTER EXISTING VEPCO R/W OF UNSPECIFIED WIDTH (D.B. 149, PG. 207)
- B: VARIABLE WIDTH STRIP HEREBY DEDICATED TO COMMONWEALTH OF VIRGINIA, DEPARTMENT OF TRANSPORTATION, FOR RIGHT-OF-WAY PURPOSES.
- C: CENTER EXISTING VEPCO R/W OF UNSPECIFIED WIDTH (D.B. 150, PG. 338)
- D: EXISTING 35' VIRGINIA DEPARTMENT OF TRANSPORTATION DRAINAGE EASEMENT (D.B. 156, PG. 398)
- E: EXISTING YORK COUNTY 10' DRAINAGE AND UTILITIES EASEMENT (P.B. 11, PG. 98)
- F: EXISTING YORK COUNTY 20' DRAINAGE AND UTILITIES EASEMENT (P.B. 11, PG. 98)
- G: 20' UTILITIES EASEMENT HEREBY CONVEYED TO YORK COUNTY.
- H: CENTER EXISTING VEPCO R/W OF UNSPECIFIED WIDTH (D.B. 150, PG. 335)

VIRGINIA STATE PLANE
COORDINATE SYSTEM—SOUTH ZONE (NAD 83)



- LEGEND**
- DENOTES IRON PIN SET
 - DENOTES CONC. MON. SET
 - DENOTES IRON PIPE, PIN OR AXLE FOUND (AS DENOTED HEREON)
 - DENOTES CONC MON FOUND
 - P— DENOTES CONC VDOT MON FOUND
 - ▨ DENOTES R/W DEDICATED



APPROVED:
YORK COUNTY BOARD OF SUPERVISORS
BY: John T. Dumas, PE
PLAT APPROVING AGENT
DATE: 12-22-98

STATE OF VIRGINIA
COUNTY OF YORK
IN THE CLERK'S OFFICE OF THE CIRCUIT COURT FOR THE COUNTY OF YORK, THE 23RD DAY OF DEC., 1998
THIS MAP WAS PRESENTED AND ADMITTED TO RECORD AS THE LAW DIRECTS IN PLAT BOOK 12, PAGE 657

TESTE: Nancy B. Kane, Clerk
CLERK
BY: Kristen N. Nelson, D.C.