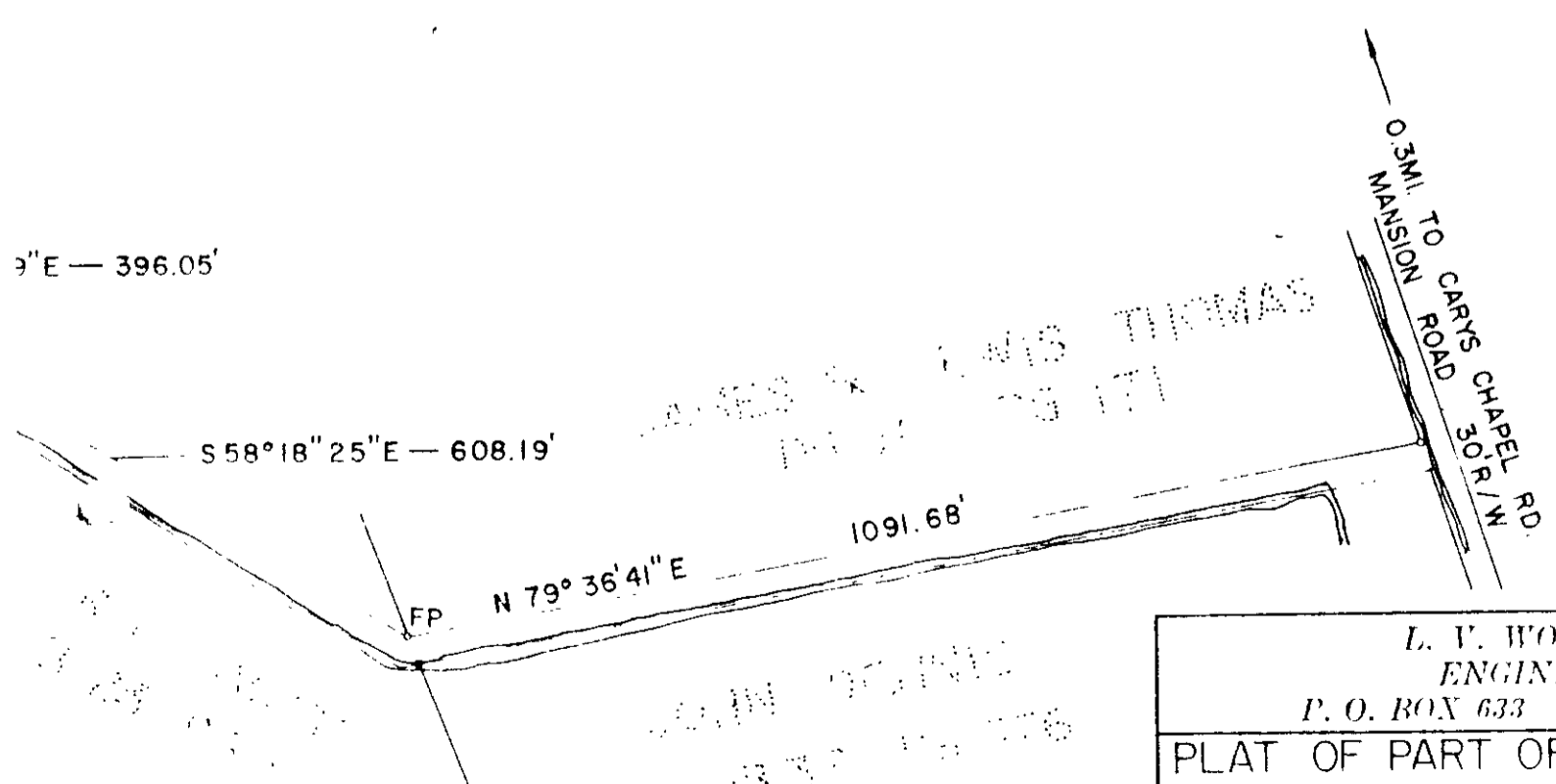


$\Delta = 3^{\circ}13'00''$
 RADIUS = 4504.86'
 ARC = 252.99'
 CH. = 252.96'
 CH. BRG. = S 3°29'46" E

9"E — 396.05'

S 58°18'25"E — 608.19'



38-15A

L. V. WOODSON & ASSOCIATES ENGINEERS & SURVEYORS P. O. BOX 633 WILLIAMSBURG, VIRGINIA	
PLAT OF PART OF DEWEY PLAINS FARM STANDING IN THE NAME OF BAKER P W ET ALS & LYING IN BETHEL DISTRICT, YORK COUNTY, VIRGINIA.	
SCALE: 1" = 200'	DWG: 166-1
DATE: APRIL 4, 1969	REVISED APRIL 30, '69