

LINE TABLE

LINE	BEARING	DISTANCE
L1	S 07°56'31" W	94.95'
L2	S 15°41'30" E	27.31'
L3	S 56°55'41" E	55.20'
L4	N 33°04'19" E	5.00'
L5	S 56°55'41" E	15.00'
L6	S 33°04'19" W	20.00'
L7	N 56°55'41" W	15.00'
L8	N 33°04'19" E	5.00'
L9	N 56°55'41" W	58.96'
L10	N 15°41'30" W	33.16'

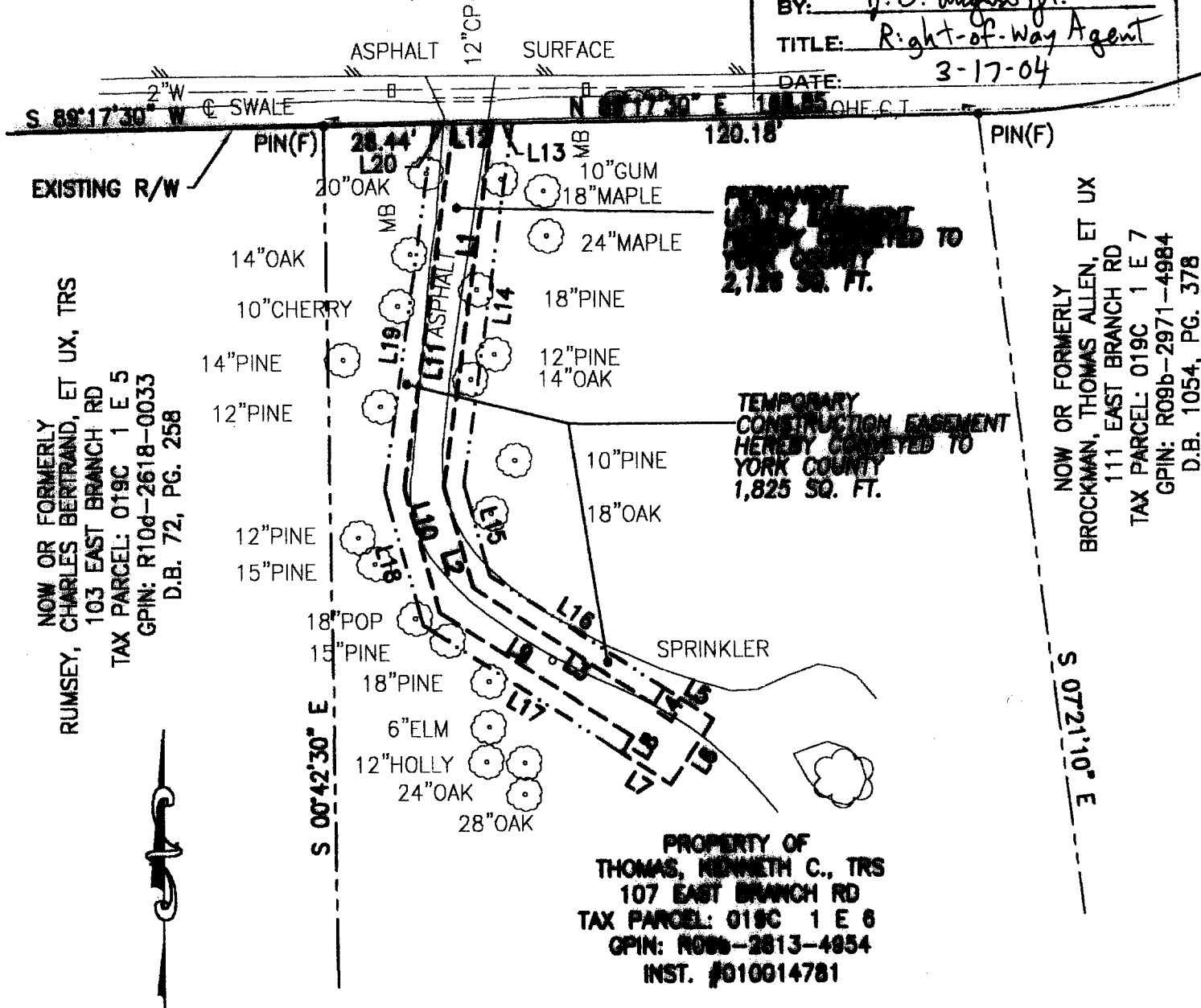
LINE TABLE

LINE	BEARING	DISTANCE
L11	N 07°56'31" E	95.52'
L12	N 89°17'30" E	10.11'
L13	N 89°17'30" E	5.06'
L14	S 07°56'31" W	94.67'
L15	S 15°41'30" E	24.38'
L16	S 56°55'41" E	53.31'
L17	N 56°55'41" W	60.84'
L18	N 15°41'30" W	36.09'
L19	N 07°56'31" E	95.81'
L20	N 89°17'30" E	5.06'

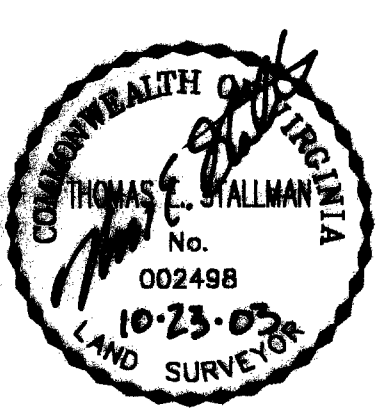
EAST BRANCH ROAD
(40' R/W)

YORK COUNTY
APPROVED FOR RECORDATION

BY: J. B. August Jr.
TITLE: Right-of-Way Agent
DATE: 3-17-04



- NOTES:
 1. THIS PLAT IS INTENDED FOR A DESCRIPTION OF EASEMENT ONLY, AND DOES NOT CONSTITUTE A BOUNDARY SURVEY
 2. THIS SURVEY WAS PERFORMED WITHOUT THE BENEFIT OF A TITLE REPORT, AND MAY NOT REFLECT ALL EASEMENTS OR RESTRICTIONS THAT MAY AFFECT THE PROPERTY.



REFERENCES:
 INST. #010014781
 P.B. 5, PG. 5

MERIDIAN IS BASED ON:
 VIRGINIA STATE PLANE
 COORDINATE SYSTEM,
 SOUTH ZONE, NAD 83
 U.S. SURVEY FEET

PLAT OF EASEMENT ACQUISITION
 FROM: KENNETH C. THOMAS, TRS
 TO: COUNTY OF YORK, VIRGINIA
 PROJECT: MARLBANK FARM
 SANITARY SEWER IMPROVEMENTS

DATE: 10/23/03 SCALE: 1" = 40'

PRECISION MEASUREMENTS, INC.
 SURVEYORS • GPS • GIS • MAPPERS
 813 DILIGENCE DRIVE, SUITE 119
 NEWPORT NEWS, VIRGINIA 23606
 (757) 595-7570