

REF. NO. 1A  
0.1865 ACRE  
JAMES C. & JEAN D. HOPSON  
ZONED RR  
DB 427, PG 594 DB 118, PG 321  
& JOHNSON BAIRD PLAT

REF. NO. 1B  
0.1862 ACRE  
JAMES C. & JEAN D. HOPSON  
TAX #31-00-00-031  
ZONED RR  
DB 427, PG 594 DB 118, PG 321 &  
DB 52, PG 553 & JOHNSON BAIRD PLAT

REF. NO. 1C  
0.1244 ACRE  
JAMES C. & JEAN D. HOPSON  
TAX #31-00-00-31  
ZONED RR  
DB 427, PG 594 DB 118, PG 321 &  
DB 52, PG 552 & JOHNSON BAIRD PLAT

REF. NO. 1D  
0.0340 ACRE  
JAMES C. & JEAN D. HOPSON  
TAX #31-00-00-31  
ZONED RR  
DB 427, PG 594 DB 118, PG 321 &  
DB 94, PG 88 & JOHNSON BAIRD PLAT

DOROTHY A. & JOHN M. SLADE  
TAX #31-00-00-030  
ZONED RR  
DB 129, PG 471 &  
DB 38, PG 209 &  
DB 38, PG 333 &  
DB 118, PG 321

APPROXIMATE LOCATION OF  
FIRM ZONE BOUNDARIES AS  
TRACED FROM FIRM MAP AND  
SCALED INTO CAD DRAWING

JAMES C. & JEAN D. HOPSON  
TAX #31-00-00-032  
ZONED RR  
DB 514, PG 278 DB 194, PG 11  
& DB 33, PG 201

PARCEL 2  
1.5195 ACRES  
JAMES C. HOPSON  
& LLOYD A. HOPSON  
TAX #031 30A  
ZONED RR  
DB 865, PG 395 &  
DB 118, PG 321 &  
JOHNSON BAIRD PLAT

PARCEL "D"  
JAMES CARROLL HOPSON  
& JEAN FAULK HOPSON  
TAX #31-08-00-0000  
ZONED RR  
DB 788, PG 175 &  
PB 4, PG 158

PARCEL "B"  
JAMES C. & JEAN D. HOPSON  
TAX #31-08-00-000B  
ZONED RR  
DB 515, PG 93 &  
DB 148, PG 15 &  
DB 182, PG 595 &  
PB 4, PG 158

JAMES C. & LLOYD A. HOPSON  
TAX #31-00-00-032B  
ZONED RR  
DB 865, PG 395 & DB 420, PG 278  
& DB 118, PG 330 &  
PLAT OF DISCHINGER AND ASSOC.

DONALD D. SMITH  
TAX #31-07-00-000A  
ZONED RR  
DB 760, PG 183 &  
PB 11, PG 682 &  
DB 137, PG 98

PROPERTY LINE AS  
SHOWN IN PB 11,  
PG 682

MAXINE B. BROWN  
TAX #31-07-00-00B  
ZONED RR  
DB 264, PG 506 &  
PB 11, PG 682  
& PLAT OF MURRAY  
& DISCHINGER

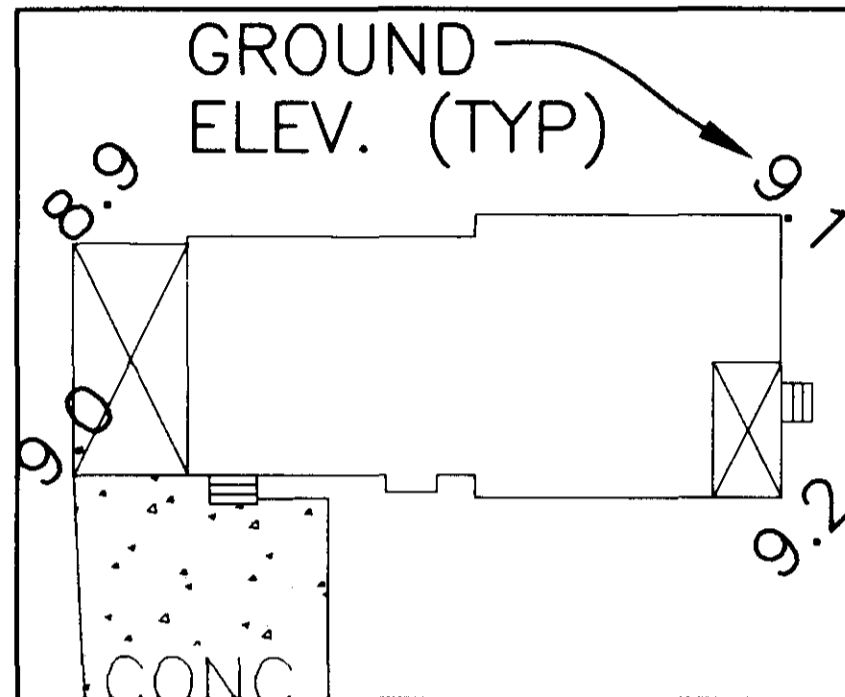
PROP. LINE HEREBY VOIDED  
APPROX. LOCATION  
DRAINFIELD AS  
SCALED FROM VDOT  
PLANS

EAST YORKTOWN ROAD  
ROUTE 782 (30' R/W PER PB 11, PG 682)

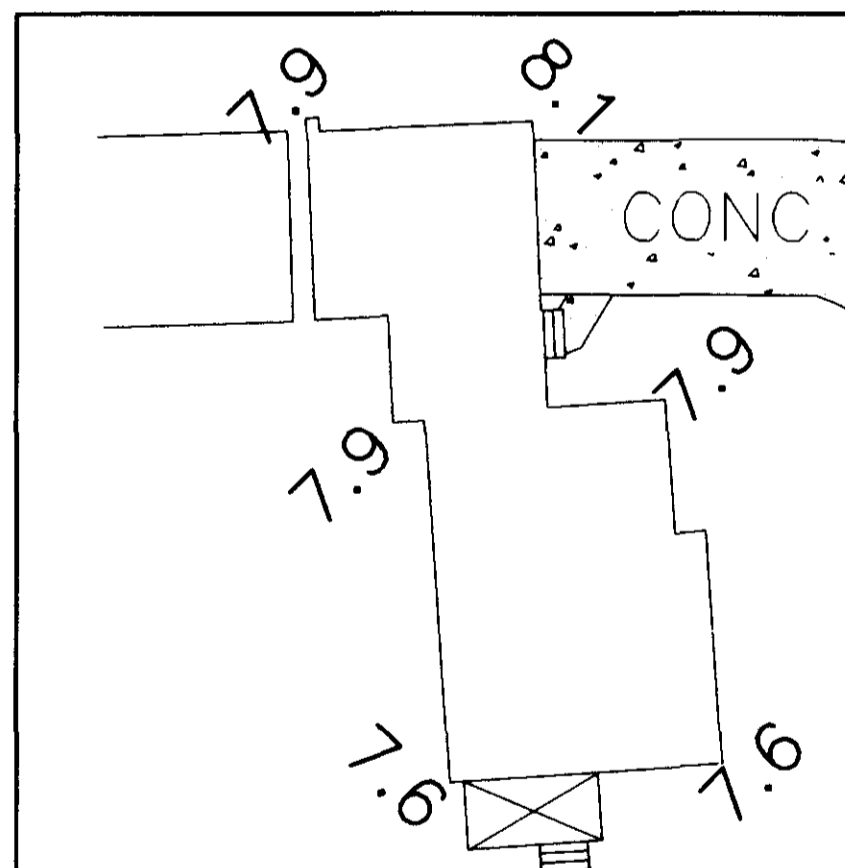
UTIL.  
POLE  
(TYP)

LEGEND

- Pipe/Rod Set
- Concrete Monument Set
- Pipe/Rod Found
- Concrete Monument Found
- RPA Resource Protection Area
- RMA Resource Management Area



PARCEL 2  
GROUND ELEVATIONS



PARCEL 1  
GROUND ELEVATIONS

LINE TABLE		
LINE	LENGTH	BEARING
L1	51.94	N22°34'00"E
L2	40.44	N22°34'00"E
L3	62.82	N30°16'55"E
L4	119.81	S58°31'30"E
L5	11.94	S23°12'38"W
L6	86.28	S59°00'00"E
L7	63.72	S59°00'00"E
L8	20.00	S31°30'00"W
L9	90.00	S31°30'00"W

BOUNDARY LINE ADJUSTMENT  
BETWEEN THE PROPERTIES OF

**JAMES C. & LLOYD A. HOPSON  
& JAMES C. & JEAN D. HOPSON**

BETHEL DISTRICT - YORK COUNTY, VIRGINIA

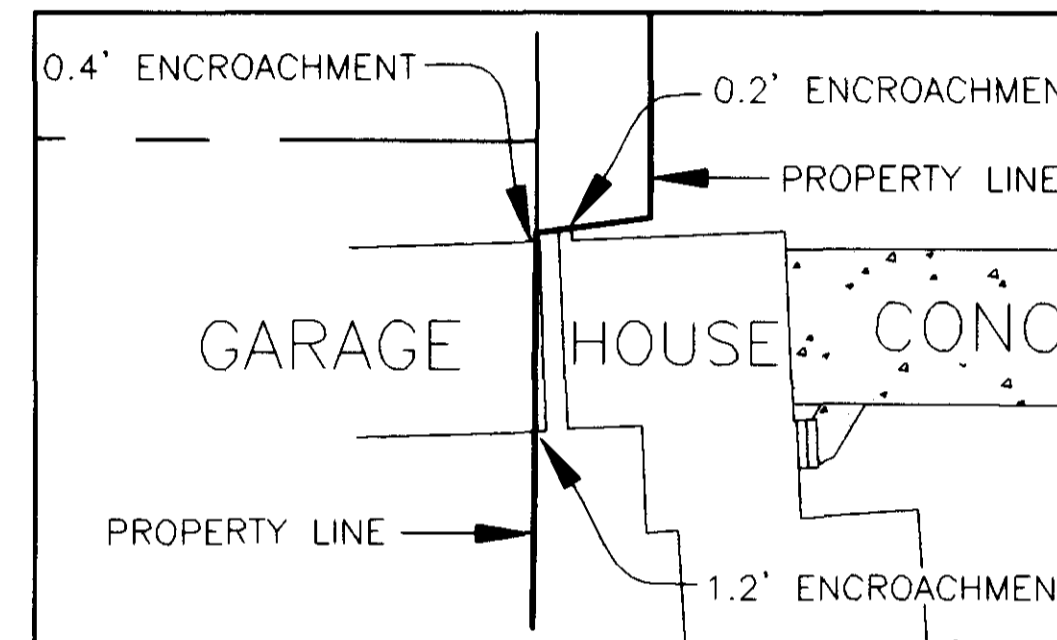
DECEMBER 16, 2003

SHEET 2 OF 2

SCALE: 1" = 50'

**Simmons Newsome, P.C.**

Surveyors Planners  
110A Dare Road  
Yorktown, Virginia 23692  
Phone (757) 898-4914 Fax (757) 898-4914



DETAIL "A"  
SCALE: 1" = 20'

GROUND ELEVATIONS  
SHOWN HEREON  
DERIVED FROM YORK  
CO. GEODETIC STATION  
117.



APPROVED:  
YORK COUNTY BOARD OF SUPERVISORS

BY: Al Maddalena  
Plat Approving Agent

DATE: 5/17/04

STATE OF VIRGINIA  
COUNTY OF YORK

In the Clerk's Office of the Circuit Court for the  
County of York the 20<sup>th</sup> day of May, 2004 this 4:27PM  
map was presented and admitted to record as  
the law directs in Instrument # 040010521

TESTE: Lynn S. Jenkins  
Clerk  
BY: Archie M. Chrusman