

Design File - C:\documents\ms\jacob\4627\4627005.dwg
 Design Name - 15052-63

Ref. File - C:\documents\ms\jacob\4627\4627005.dwg
 Level - On - 15052-63

Ref. File - C:\documents\ms\jacob\4627\4627005.dwg
 Level - On - 15052-63

Ref. File - C:\documents\ms\jacob\4627\4627005.dwg
 Level - On - 15052-63

Ref. File - C:\documents\ms\jacob\4627\4627005.dwg
 Level - On - 15052-63

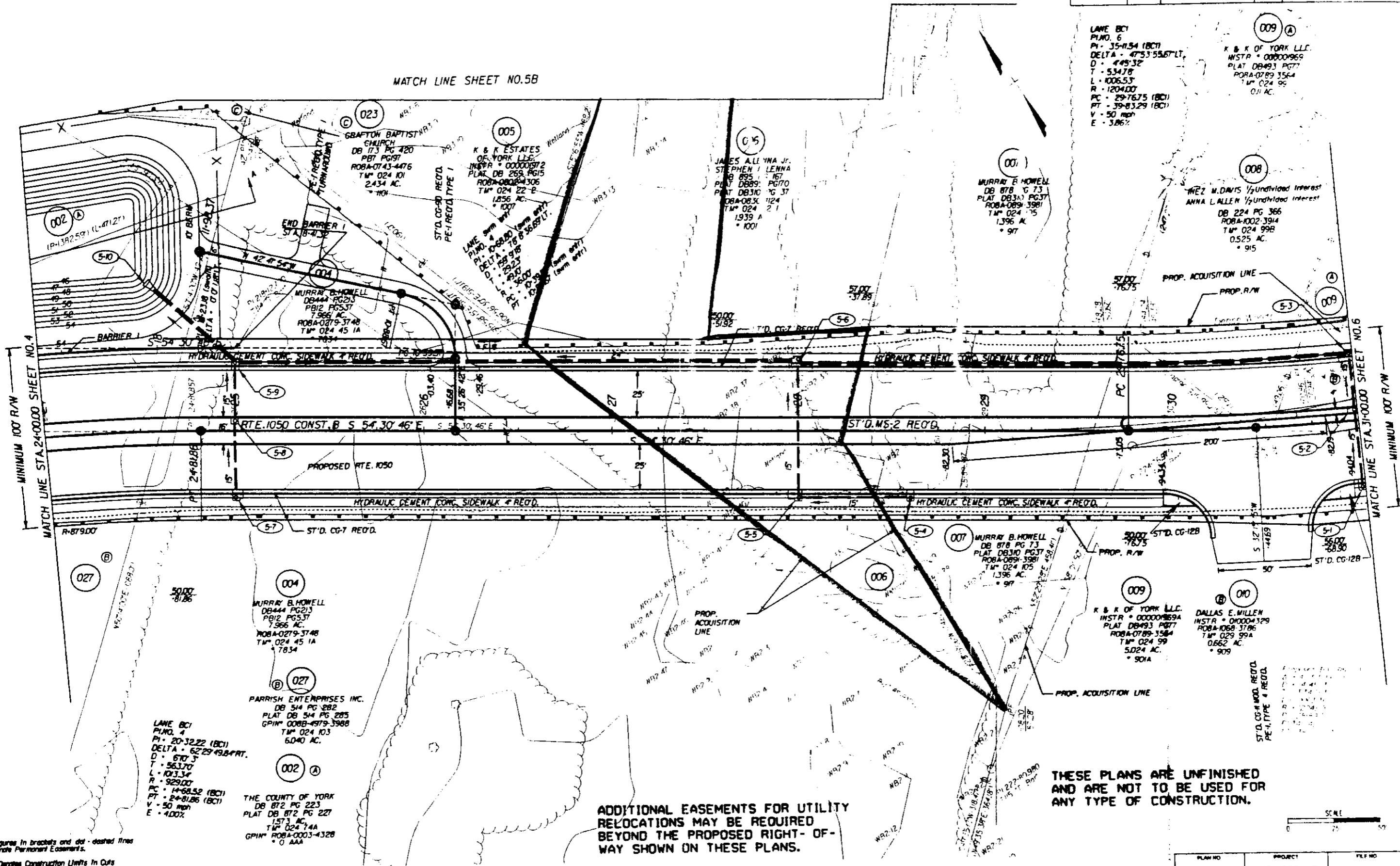
Ref. File - C:\documents\ms\jacob\4627\4627005.dwg
 Level - On - 15052-63

Ref. File - C:\documents\ms\jacob\4627\4627005.dwg
 Level - On - 15052-63

DESIGN FEATURES RELATING TO CONSTRUCTION OR TO REGULATION AND CONTROL OF TRAFFIC MAY BE SUBJECT TO CHANGE AS DEFINED NECESSARY BY THE DEPARTMENT

STATE	FEDERAL AID PROJECT	ROUTE	PROJECT	SHEET NO.
VA		1050	1050-099-180, C-501 R/W-201	5

MATCH LINE SHEET NO.5B



LANE BC1
 PLNO. 6
 PI - 35-11.54 (BC1)
 DELTA - 47°53'55.67" LT.
 D - 445'32"
 T - 534.78'
 L - 1006.53'
 R - 1204.00'
 PC - 29-76.75 (BC1)
 PT - 39-83.29 (BC1)
 V - 50 mph
 E - 3.86%

009 A
 K & K OF YORK LLC.
 INSTR * 00000969
 PLAT DB493 PG77
 POBA-0789-3564
 TM 024 99
 0.1 AC.

005
 JAMES A. LYNA JR.
 STEPHEN I. LENNA
 DB 895 PG 167
 PLAT DB310 PG 37
 POBA-0830-1124
 TM 024 21
 1939 A
 * 1001

001
 MURRAY B. HOWELL
 DB 878 PG 73
 PLAT DB310 PG 37
 POBA-0891-3981
 TM 024 115
 1,396 AC
 * 97

008
 WEZ. M. DAVIS 1/2 Undivided Interest
 ANNA L. ALLEN 1/2 Undivided Interest
 DB 224 PG 366
 POBA-1002-3914
 TM 024 99B
 0.525 AC.
 * 915

004
 MURRAY B. HOWELL
 DB 878 PG 73
 PLAT DB310 PG 37
 POBA-0891-3981
 TM 024 115
 1,396 AC
 * 97

004
 MURRAY B. HOWELL
 DB 878 PG 73
 PLAT DB310 PG 37
 POBA-0891-3981
 TM 024 105
 1,396 AC
 * 97

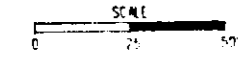
027
 PARRISH ENTERPRISES INC.
 DB 514 PG 282
 PLAT DB 514 PG 285
 GPIN * 008B-4979-3988
 TM 024 103
 6,040 AC.

LANE BC1
 PLNO. 4
 PI - 20-32.22 (BC1)
 DELTA - 62°29'49.8" RT.
 D - 670'3"
 T - 563.70'
 L - 1013.34'
 R - 929.00'
 PC - 14-68.52 (BC1)
 PT - 24-81.86 (BC1)
 V - 50 mph
 E - 4.00%

002 A
 THE COUNTY OF YORK
 DB 872 PG 223
 PLAT DB 872 PG 227
 1573 AC.
 TM 024 74A
 GPIN * ROBA-0003-4328
 * 0 AAA

ADDITIONAL EASEMENTS FOR UTILITY RELOCATIONS MAY BE REQUIRED BEYOND THE PROPOSED RIGHT-OF-WAY SHOWN ON THESE PLANS.

THESE PLANS ARE UNFINISHED AND ARE NOT TO BE USED FOR ANY TYPE OF CONSTRUCTION.



Note: Figures in brackets and dot-dashed lines denote Permanent Easements.

--- Denotes Construction Limits In Cuts

--- Denotes Construction Limits In Fills

PLAN NO.	PROJECT	FILE NO.	SHEET NO.
	1050-099-180		5