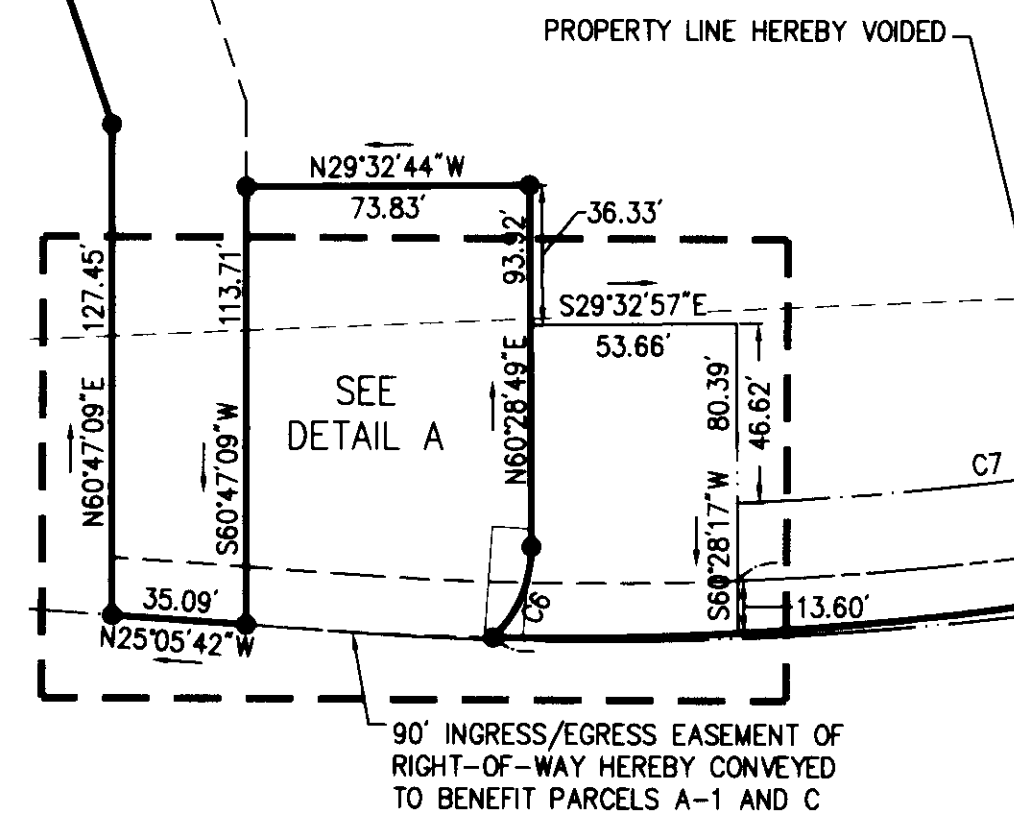


SUBDIVISION OF THE PROPERTIES OF
McMURRAN FAMILY LIMITED PARTNERSHIP
 AND
McCALE DEVELOPMENT CORPORATION
 NELSON MAGISTERIAL DISTRICT
 COUNTY OF YORK, VIRGINIA

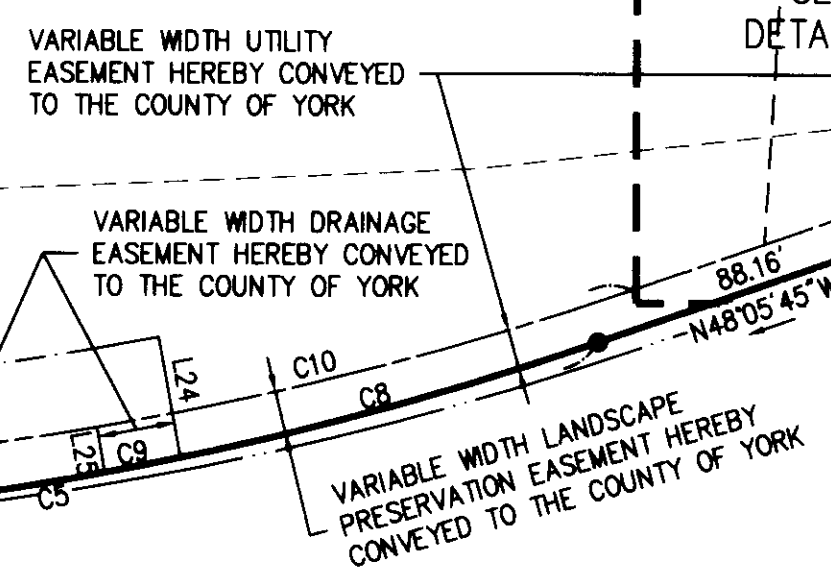
DATE: 02/10/05 SHEET 3 OF 3 SCALE: AS SHOWN

PROJECT NO: 30801.00 DRAWN BY: DWP

VHB Vanasse Hangen Brustlin, Inc.
 Transportation Land Development Environmental Services
 11832 Rock Landing Drive, Suite 203
 Newport News, Virginia 23606-4231
 (757) 873-3386 • FAX (757) 873-0757



DETAIL A
SCALE: 1"=25'



DETAIL B
SCALE: 1"=25'

INSERT
SCALE: 1"=50'

LINE	LENGTH	BEARING
L1	89.56'	N73°44'33"W
L2	137.98'	S73°42'29"E
L3	10.23'	N40°32'03"E
L4	83.01'	N40°36'29"E
L5	37.26'	N38°10'10"E
L6	120.46'	N50°10'16"E
L7	45.77'	N64°49'03"E
L8	50.19'	N63°46'13"E
L9	15.04'	N61°55'22"E
L10	90.28'	N61°55'22"E
L11	15.05'	N61°55'22"E
L12	64.71'	N53°15'35"E
L13	115.36'	N74°46'02"E
L14	53.14'	S68°54'20"E
L15	32.00'	N55°47'40"E

LINE	LENGTH	BEARING
L16	30.66'	N47°47'05"E
L17	109.47'	N46°59'34"E
L18	36.77'	N48°46'09"E
L19	124.75'	N58°09'47"E
L20	25.29'	N63°23'00"E
L21	71.36'	N51°21'22"E
L22	107.36'	N48°05'45"W
L23	420.00'	N25°05'42"E
L24	31.81'	S50°31'51"W
L25	11.96'	N50°31'51"E
L26	28.90'	N64°54'18"E
L27	10.00'	S25°05'42"E
L28	13.51'	S64°54'18"W
L29	14.83'	S64°54'18"W

Approved:
York County Board Of Supervisors

BY: Al. Maddalena
 PLAT APPROVING AGENT
 DATE: 1/19/06

State Of Virginia
County Of York

IN THE CLERK'S OFFICE OF THE CIRCUIT COURT FOR THE COUNTY OF YORK-POQUOSON, THE 10th DAY OF Jan, 2006, THIS MAP WAS PRESENTED AND ADMITTED TO RECORD AS THE LAW DIRECTS AS INSTRUMENT NUMBER 060001691
 12:01 PM

TESTE: Lynn S. Jenkins
 CLERK
 BY: Charles W. Christman, Jr.